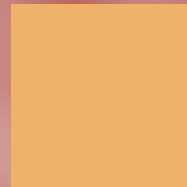
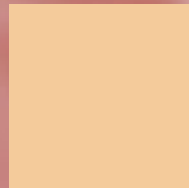
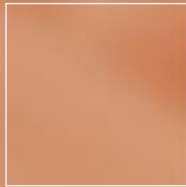


# Monoline & Duoline



INNOVATIVELY DESIGNED STEEL & STAINLESS STEEL TUBE RADIATORS



URS



# MONOLINE & DUOLINE

The Monoline's slim cylinders provide the perfect balance of shape, functionality and excellent heat characteristics.

Innovative, elegant and outstanding on performance, this superb range of tubular radiators gives designers the opportunity to achieve a host of stunning architectural effects. Durable as well as beautiful, they are fabricated from heavy gauge steel that can be powder coating or chrome plated. A striking stainless steel version is also available.

The Monoline's distinctly modern look makes it perfect for contemporary or futuristic settings.



## Monoline

The Monoline is available as a single or double radiator. The radiator comprises 42mm horizontal headers, connected to a series of 1.5mm thick, 25mm diameter vertical tubes. Completely versatile, the Monoline range of 14 heights from 342mm to 2500mm, with 45mm spacing between tubes, with lengths up to 1800mm.

## Duoline

Also available in single or double format, its unique hollow tube design ensures low water content and exceptional heating performance. Fabricated from horizontal headers with vertical connecting tubes, it differs from the Monoline in that it uses 35mm hollow tubes with an internal and external wall thickness of 1.5mm, lengths up to 1800mm.

## Stainless Steel

Both Monoline and Duoline single column radiators are now available in polished stainless steel for a superlative finish.

Wall or floor brackets can be supplied to ensure maximum flexibility of siting. All radiators have a maximum working pressure of 10 bar and carry a 5 year guarantee against manufacturing defect. Standard colour is RAL 9010 warm white, but other RAL colours/finishes from the MHS Colour Card are available on request.



# Monoline

There's no need to limit this designer range to the bathroom. In the contemporary residence, the elegant Monoline is equally at home in the kitchen, utility room or living areas. For that maximum impact, choose either the stunning stainless steel or chrome finish.



# Duoline

Duoline utilises vertical tubes rather than closed cylinders. The tubular structure not only maximises the ability of the radiator to emit heat, but also minimises the water content of the radiator.

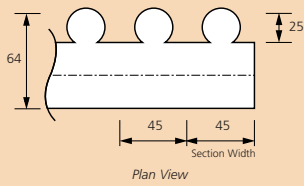
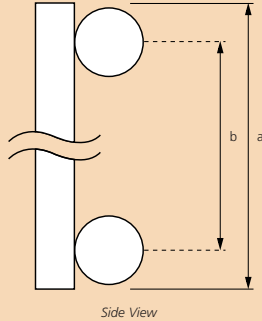
Order the Duoline in any one of a large range of colours. Whether you choose to tone or contrast with the décor, this is one radiator you won't want to hide.



# Monoline

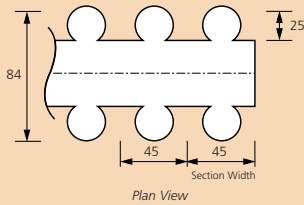
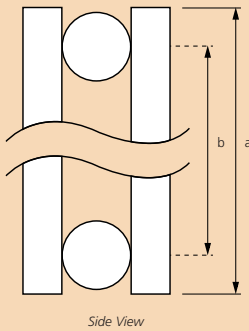
## Single Section Dimensions/Output

Single Tube Outputs 75/65/20 EN442  $\Delta t$  50°C



Height (a) (mm)	Centres (b) (mm)	Weight (Kg)	Water Content (Lit)	White/Colours (Watts)	Chrome (Watts)	Stainless Steel (Watts)
342	300	0.58	0.21	22	15	18
400	358	0.63	0.22	25	18	20
500	458	0.72	0.26	29	20	23
600	558	0.82	0.29	34	24	27
642	600	0.86	0.31	36	25	29
700	658	0.91	0.33	38	27	30
800	758	1.00	0.37	43	30	34
842	800	1.04	0.38	45	32	36
1000	958	1.19	0.44	52	36	42
1200	1158	1.38	0.51	61	43	49
1500	1458	1.66	0.62	74	52	59
1800	1758	1.94	0.73	88	62	70
2100	2058	2.22	0.84	103	72	82
2500	2458	2.59	0.89	123	N/A	98

## Double Tube Outputs 75/65/20 EN442 $\Delta t$ 50°C



Height (a) (mm)	Centres (b) (mm)	Weight (Kg)	Water Content (Lit)	White/Colours (Watts)	Chrome (Watts)
342	300	0.93	0.33	33	23
400	358	1.03	0.36	37	26
500	458	1.21	0.43	45	32
600	558	1.39	0.51	54	38
642	600	1.47	0.54	57	40
700	658	1.57	0.59	61	43
800	758	1.75	0.66	69	48
842	800	1.83	0.69	72	50
1000	958	2.11	0.82	84	59
1200	1158	2.47	0.97	99	69
1500	1458	3.01	1.20	121	85
1800	1758	3.55	1.40	143	100
2100	2058	4.09	1.66	164	115
2500	2458	4.81	1.97	192	N/A

### Maximum Number of Sections (single or double)

Monoline	White/Colours	Chrome	Stainless S (single column only)
342 - 800	40	25	10
842 - 1200	40	18	10
1500 - 1800	40	12	10
2100	40	10	10
2500	40	N/A	10

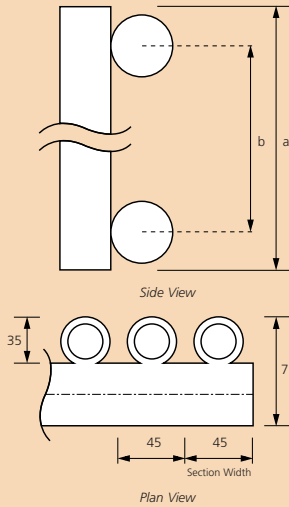
To convert Watts to Btu's X 3.412



# Duoline

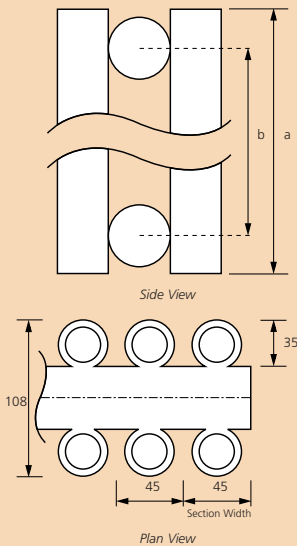
## Single Section Dimensions/Output

Single Tube Outputs 75/65/20 EN442 Δt 50°C



Height (a) (mm)	Centres (b) (mm)	Weight (Kg)	Water Content (Lit)	White/Colours (Watts)	Chrome (Watts)	Stainless Steel (Watts)
342	300	0.96	0.19	31	22	25
400	358	1.08	0.23	35	25	28
500	458	1.30	0.26	42	29	34
600	558	1.52	0.29	48	34	38
642	600	1.61	0.30	51	36	41
700	658	1.74	0.32	54	38	43
800	758	1.96	0.35	60	42	48
842	800	2.05	0.36	63	44	50
1000	958	2.40	0.41	72	50	58
1200	1158	2.84	0.47	84	59	67
1500	1458	3.50	0.56	101	71	81
1800	1758	4.16	0.65	119	83	95
2100	2058	4.82	0.74	136	95	109
2500	2458	5.70	0.86	159	N/A	N/A

Double Tube Outputs 75/65/20 EN442 Δt 50°C



Height (a) (mm)	Centres (b) (mm)	Weight (Kg)	Water Content (Lit)	White/Colours (Watts)	Chrome (Watts)
342	300	1.69	0.29	51	36
400	358	1.96	0.34	57	40
500	458	2.39	0.38	69	48
600	558	2.83	0.42	79	55
642	600	3.01	0.44	84	59
700	658	3.26	0.47	90	63
800	758	3.69	0.51	100	70
842	800	3.88	0.53	104	73
1000	958	4.56	0.60	120	84
1200	1158	5.43	0.68	139	97
1500	1458	6.73	0.81	167	117
1800	1758	8.03	0.94	195	137
2100	2058	9.33	1.07	221	155
2500	2458	11.06	1.25	257	N/A

Maximum Number of Sections (single or double)

Duoline	White/Colours	Chrome	Stainless S (single column only)
342 - 600	40	25	10
642 - 800	40	18	10
842 - 1200	40	13	10
500 - 1800	40	10	10
2100	40	8	10
2500	40	N/A	N/A



## Correction Factor Table

Δt	CF
60	1.267
59	1.240
58	1.213
57	1.186
56	1.159
55.5	1.145
55	1.132
54	1.105
53	1.079
52	1.052
51	1.026
50	1.000
45	0.872
40	0.748
35	0.629

The outputs shown within this brochure are based on BS EN442, 75-65-20°C operating conditions, giving a Δt of 50°C, for Δt's other than this, a correction factor must be applied. This correction factor table assumes an averaged exponent of 1.30.

If a more accurate exponent/correction factor is required, please contact MHS Radiators.

Example: Output required @ 82-71-21°C  
 Δt 55.5 the CF = 1.145, therefore multiply the listed output by the correction factor to give actual radiator output under these operating conditions.

## Water Treatment

This product is for use on closed heating systems only and is not suitable for installation within secondary HWS circuits.

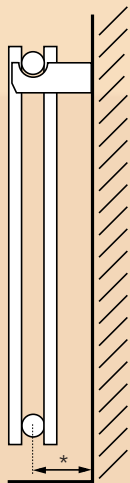
On completion of installation the system should be properly flushed and filled (in accordance with BS 5449 section five Commissioning) in order to remove debris and minimise the presence of solid particles and chemical residues which may cause corrosion and damage within the system.

If a corrosion inhibitor is to be used, this should be in accordance with the manufacturer's instructions and recommendations and should take into account the particular metals within the system.

## Bracketry

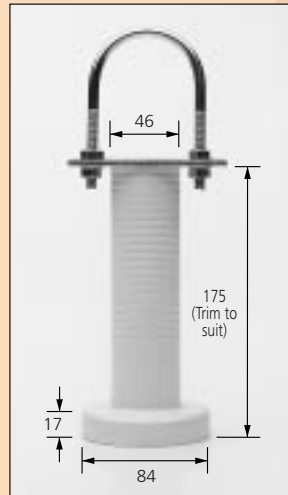
### Monoline / Duoline wall brackets

Monoline, Duoline	Brackets
Up to 15 Sections	4
16 - 25 Sections	6
26 - 40 Sections	8

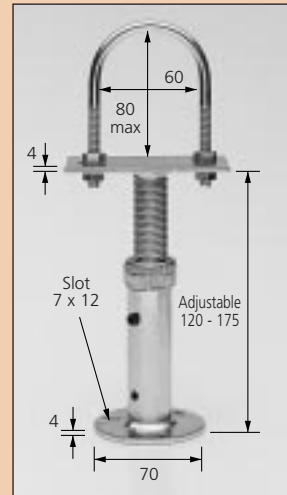


\*Single tube 45mm, Double tube 70mm

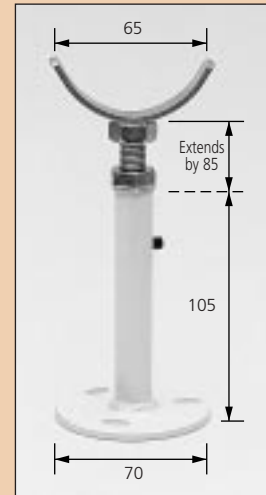
### Floor supports



Cover for MP (Finish RAL 9001)

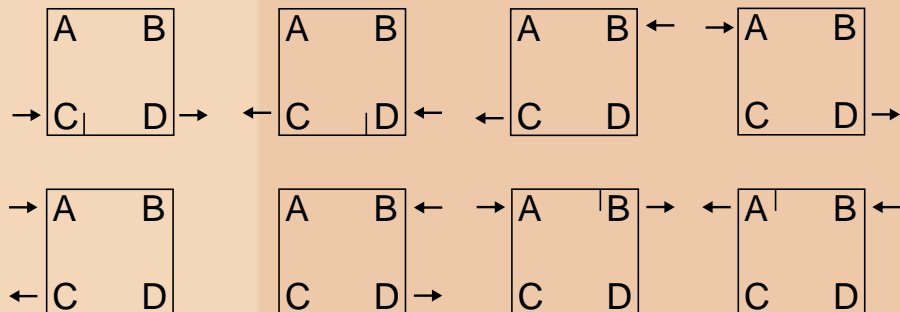


Free Standing MP Suitable for all Monoline and Duoline double tube models only



Floor Support MP1 Suitable for all Monoline

## Radiator Connection Details



Each radiator must be specified with one of the above connection details.

Standard supply unless advised = CD



A member of the Modular Heating Group Plc

35 Nobel Square, Burnt Mills Industrial Estate, Basildon, Essex SS13 1LT Tel: 01268 591010 Fax: 01268 728202

[www.mhsradiators.com](http://www.mhsradiators.com)

This publication is issued subject to alteration or withdrawal without notice. The illustrations and specifications are not binding in detail. All offers and sales are subject to the Company's current terms and conditions of sale.

RC/0804/5103