



FRAME PICTURE

ARTIC - CORALLO - LAGOON

artwork **Mariano Moroni**

**EUROPEAN
WARRANTY**

MATERIAL:

Horizontal collector in painted carbon steel with \varnothing of 30 mm.
Heating elements in painted carbon steel.
Heating plate in painted carbon steel.

FIXING KIT:

Brackets, airvent, hexagonal tool, plugs and screws for mounting suitable for use on compact or hollow brick, user notice.
The kit is certified from TÜV in compliance with VDI 6036-class 4.

PACKAGING:

The radiator is protected by a wooden crate and carton.
User notice included.

PAINTING PROCESS:

Painted with ecological epoxy. (Certificate DIN 55900-1,-2).
Thermal outputs certified in accredited laboratories in compliance with European norm EN442.

PRODUCT CERTIFICATES



Pression maximale de service: 5 bar

Température maximale de service: 110° C

Available for central heating systems

Connexions: n° 2 x 1/2" gaz - n° 1 x 1/8" gaz

HOW TO ORDER THE FRAME PICTURE RADIATORS

ARTICLE CODE STRUCTURE

Radiator model	Radiator dimensions	Article code of the connection	Model code Frame Artic: G10 Frame Corallo: G09 Frame Lagoon Rosa: P21 Frame Lagoon Azul: P22 Custom Frame: P99	Constant value
AAAA	BBB CC	DDD	EEE	B

Example

Radiator model Example: Frame radiator	Radiator dimensions Example: mm 464x1822	Article code of the connection Example: connection H01	Model code Example: Frame Corallo G09	Constant value
FRST	464 18	V11	G09	B

EXAMPLE OF ARTICLE CODE CREATION

In case of a FRAME CORALLO 464x1822 mm, with V11 connection.

The article code will be:

FRST 464 18 V11 G09 B

ACCESSORIES



Elegant square manual valve kit painted pure white R01

Copper connection \varnothing 12/14/15
Art. Nr. 5991990310553

Multilayer connection \varnothing 16
Art. Nr. 5991990310552



Elegant square pipe centres 50 mm valve kit painted pure white R01 with thermostatic head - right

Copper connection \varnothing 12/14/15
Art. Nr. 5991990310543

Multilayer connection \varnothing 16
Art. Nr. 5991990310542



STRAIGHT HANGER POLISHED

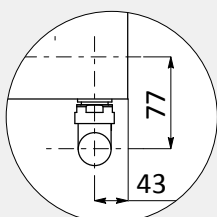
L. 352 (L= 404 mm)
Art. Nr. 5991990300187

L. 464 (L= 516 mm)
Art. Nr. 5991990300183

L. 576 (L= 628 mm)
Art. Nr. 5991990300184

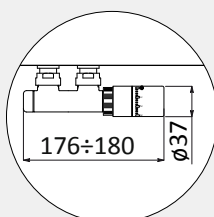
L. 688 (L= 740 mm)
Art. Nr. 5991990300188

V9÷V10



Measures for Elegant square manual valve

V11



Measures for valves type Cordivari Elegant Square with thermostatic head and pipe centres 50 mm

FRAME ARTIC (G10)



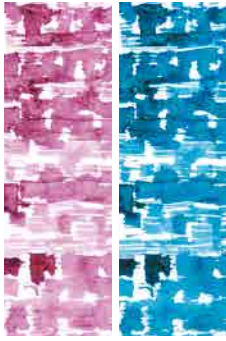
Frame ARTIC presents the fascination of a snow-white "abstract landscape". Its lines and its coating in shades of grey and black are lost in a sea of white, creating horizons, skies and territories that belong to the soul. Artic involves and stirs emotions just like in front of a painting. This radiator, available in four sizes, is versatile and functional and it represents an important contribution to interior architecture.

FRAME CORALLO (G09)



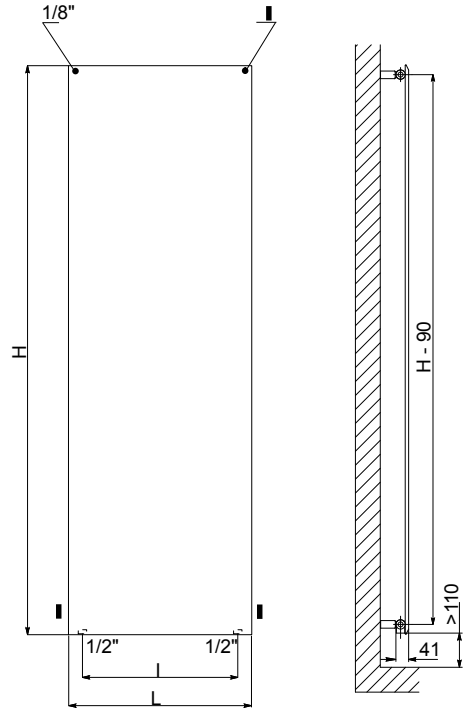
Primitive signs and colours presented in a contemporary style have inspired the Frame CORALLO furnishing radiator. The sinuous lines cover the entire heating surface radiating a joyful dynamism. Frame Corallo enriches everyday life with new visual and emotional stimuli. Versatile and stylish, it fits in any environment and can be accessorised with handy and essential satin stainless steel towel racks.

FRAME LAGOON (P21 ROSA - P22 AZUL)

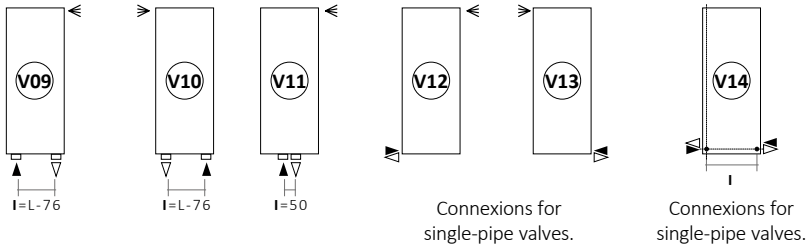


ROSA AZUL

Infinite color gradations, reflections, but, above all, transparency of colors: these are the Frame Lagoon distinctive features. The brightness and the enriched chromatic effects, evoke the perception of flowing water. The original paint comes from the Artist's expert hands, that using old painting techniques impress the water-based color on paper with appropriate designed paintbrushes' bristles.



Standard Connexions



Always specify the kind of connection needed when ordering (V09 - V10 - V11 - V12 - V13 - V14).

Legend =
 ▶ In ▷ Out ≡ Airvent
 | Pipe Centres L Width □ Connection

FRAME PICTURE VERTICAL

VERTICAL

DDD: replace with the type of connection.

EEE: replace with desired artwork.

Art. Nr.	Height		Width		Pipe Centres (V09- V10)	Pipe Centres (V14)	Dry Weight [Kg]	Surface [m ²]	Water Content [lt]	Thermal output Watt		Exponent n
	H [mm]	L [mm]	I [mm]	I [mm]	Δt = 50°C	Δt = 30°C						
FRST 352 10 DDD EEE B	1022	352	276	276	168	7,2	0,75	2,64	381	197	1,2894	
FRST 464 10 DDD EEE B		464	388	388	280	9,7	0,98	3,5	499	258	1,2894	
FRST 576 10 DDD EEE B		576	500	500	392	12	1,21	4,4	617	319	1,2894	
FRST 688 10 DDD EEE B		688	612	612	504	14,6	1,44	5,2	735	380	1,2894	
FRST 352 12 DDD EEE B	1222	352	276	276	168	8,6	0,89	3,02	455	236	1,2881	
FRST 464 12 DDD EEE B		464	388	388	280	11,4	1,17	4	596	309	1,2881	
FRST 576 12 DDD EEE B		576	500	500	392	14	1,44	5,1	736	381	1,2881	
FRST 688 12 DDD EEE B		688	612	612	504	17,2	1,72	6,1	877	454	1,2881	
FRST 352 14 DDD EEE B	1422	352	276	276	168	9,9	1,04	3,5	529	274	1,2867	
FRST 464 14 DDD EEE B		464	388	388	280	13,2	1,36	4,6	692	359	1,2867	
FRST 576 14 DDD EEE B		576	500	500	392	16,5	1,68	5,9	856	444	1,2867	
FRST 688 14 DDD EEE B		688	612	612	504	19,8	2,00	7,00	1020	529	1,2867	
FRST 352 16 DDD EEE B	1622	352	276	276	168	11,2	1,16	3,8	595	309	1,2854	
FRST 464 16 DDD EEE B		464	388	388	280	14,9	1,55	5,2	789	409	1,2854	
FRST 576 16 DDD EEE B		576	500	500	392	18,6	1,94	6,8	976	506	1,2854	
FRST 352 18 DDD EEE B	1822	352	276	276	168	12,5	1,33	4,37	676	351	1,2840	
FRST 464 18 DDD EEE B		464	388	388	280	16,6	1,74	5,8	880	457	1,2840	
FRST 576 18 DDD EEE B		576	500	500	392	20,9	2,15	7,2	1100	571	1,2840	
FRST 688 18 DDD EEE B		688	612	612	504	25	2,56	8,7	1304	677	1,2840	
FRST 352 20 DDD EEE B	2022	352	276	276	168	13,5	1,47	4,85	750	390	1,2826	
FRST 464 20 DDD EEE B		464	388	388	280	18,4	1,93	6,4	978	508	1,2826	
FRST 576 20 DDD EEE B		576	500	500	392	23	2,38	8	1222	635	1,2826	
FRST 688 20 DDD EEE B		688	612	612	504	27,6	2,84	9,6	1447	751	1,2826	

Always specify while ordering the desired Artwork type: CORALLO G09 | ARTIC G10 | LAGOON ROSA P21 | LAGOON AZUL P22

For output at different Δt than 50°C, please refer to the following formula: desired output = output at Δt 50°C x (desired Δt/50)ⁿ