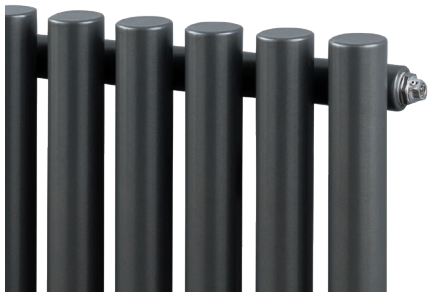


# HORNBY

- 40mm Round Tubes available in hydronic and electric options
- Available in 2 heights and 7 widths in Horizontal & Vertical
- Standard White RAL 9016 delivered in 48-72 hours
- 25 RAL colours, 8 special finishes, up to 15 working days (page 11)



### Hydronic Sizes and Prices

| Dimensions (mm) |       | Elements | Output Δt 50°c |       | Product Code  |
|-----------------|-------|----------|----------------|-------|---------------|
| Height          | Width |          | Watts          | Btu's |               |
| Horizontal      |       |          |                |       |               |
| 500             | 865   | 16       | 591            | 2016  | HORN508616H   |
|                 | 1195  | 22       | 812            | 2771  | HORN501122H   |
|                 | 1470  | 27       | 997            | 3402  | HORN501427H   |
| Vertical        |       |          |                |       |               |
| 1800            | 260   | 5        | 573            | 1955  | HORN182605V   |
|                 | 370   | 7        | 802            | 2736  | HORN183707V   |
|                 | 480   | 9        | 1031           | 3518  | HORN184809V ♦ |
|                 | 590   | 11       | 1260           | 4299  | HORN185911V   |

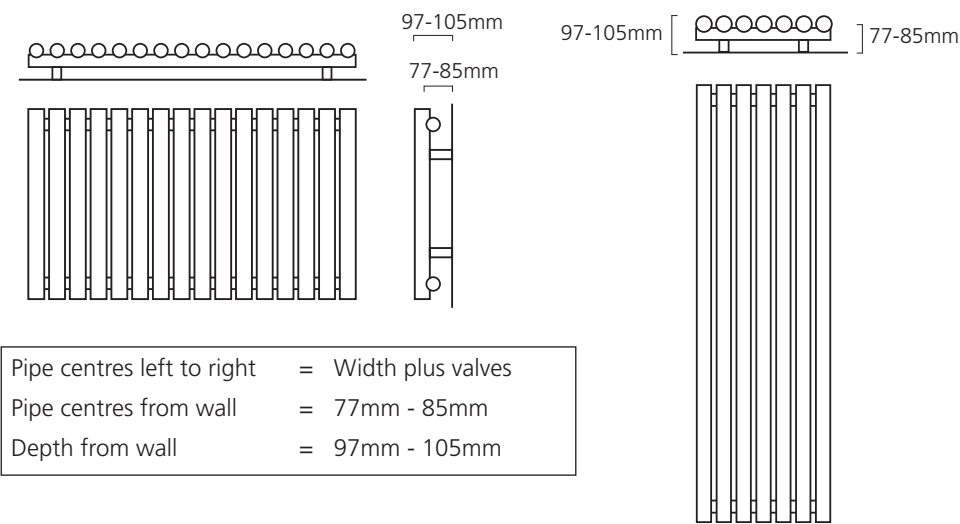
### Electric Sizes and Prices - White Vertical only

Supplied as standard with MOA Bluetooth Element

| Dimensions (mm) |       | Elements | Output Δt 50°C | Product Code |
|-----------------|-------|----------|----------------|--------------|
| Height          | Width |          | Watts          |              |
| 1800            | 370   | 7        | 800            | HORN183707EV |
|                 | 480   | 9        | 1000           | HORN184809EV |

*\*Lot 20 EcoDesign Directive Compliancy - MOA Blue is compliant with Lot 20; whereby an electric room radiator (does not apply to electric towel rails) has to have a weekly timer and adaptive start controll/out of home control. For more information: [www.lot20.co.uk](http://www.lot20.co.uk)*

### Pipe Centres and Technical Drawings



|                            |   |                   |
|----------------------------|---|-------------------|
| Pipe centres left to right | = | Width plus valves |
| Pipe centres from wall     | = | 77mm - 85mm       |
| Depth from wall            | = | 97mm - 105mm      |

### MOA Bluetooth Element (2 year guarantee)

- 5 heat settings from 30° to 60°, denoted by 5 LED's
- Full operational control of the element on smartphone / tablet via Bluetooth (with "Terma BLUE-Line" App: iOS / Android)
- 7 day timer. 2 hour drying function.
- IPx5. Class 1.
- Connect to an appropriate fused spur.
- Lot20 EcoDesign Directive Compliant\*



Horizontal in Gun Metal Grey.

+Valves Prices for hydronic models include Angled Chrome or White KINGSTON TRV's



Please specify at time of order



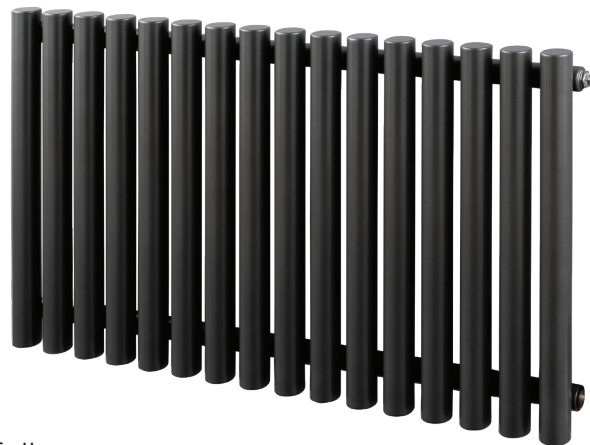
Electric version.



♦ HORNBY Vertical RAL 9016, 1800mm x 480mm shown with White KINGSTON TRV's.

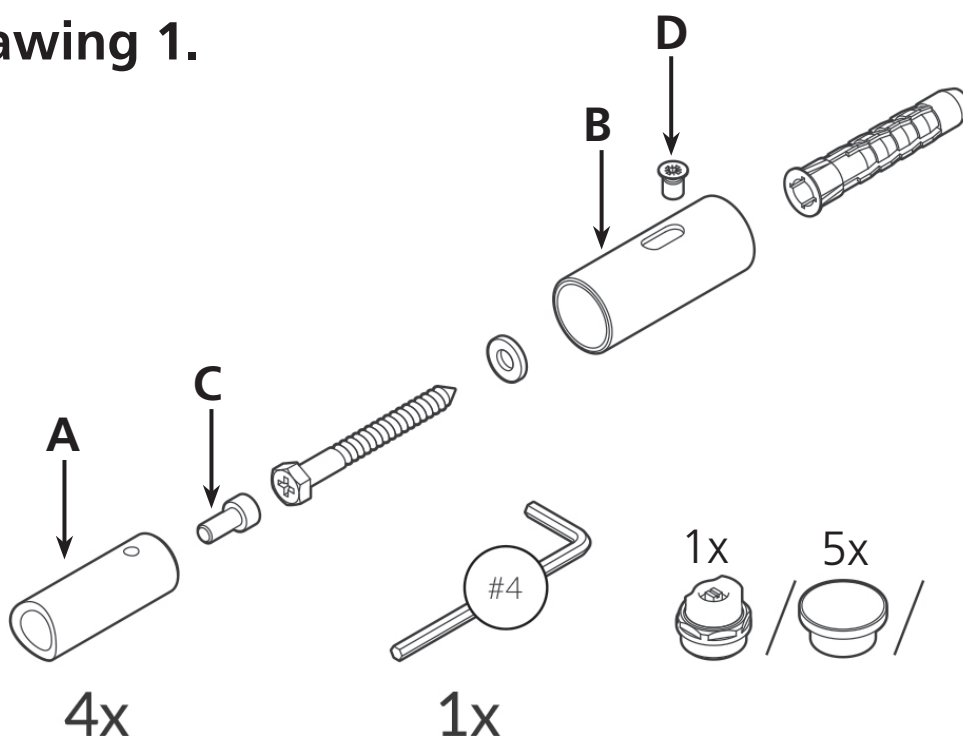
## HORNBY Fitting Instructions

### Designer Radiator



Please read these instructions and terms and conditions carefully prior to installation. Failure to do so may invalidate the warranty.

### Drawing 1.



### Pipe Centres

Pipe centres left to right = width plus valves

Pipe centres from wall = 77mm - 85mm

Depth from wall = 97mm - 105mm

### 1. Unpack & Inspect

This product should have reached you in perfect condition. Please carefully unpack and inspect this radiator and all fittings. Your point of purchase must be notified of any shortages or damage within 28 days of delivery.

For further information please see terms and conditions at the reverse of the page.

## 2. Contents

You should have:

- 1 Radiator
- 4 Wall Sleeves
- 4 Radiator studs (with grub screws)
- 4 Wall Plugs
- 4 Screws
- 1 Airvent
- 5 Blanking Plugs
- 1 Diverter (with Hex key)

You will need:

- Tape measure
- Electric drill and bits
- Spirit level
- Philips screwdriver

## 3. Mark Bracket Positions

**Please refer to Drawing 1 oveleaf**

Stand radiator against the wall with the rear facing towards you.

Fix the 4 radiator studs (A) to the radiator with the provided cap head screws(C) and hex key.

Turn the radiator around and resting on the floor, position it against the wall in the position to be fixed.

Lightly mark the position of the top Studs on the wall. Move the radiator and Measure from the marks (with a spirit level) vertically upwards to the height required for fixing (usually 100 to 200 mm)

Fix the top wall sleeves (B) and hang the radiator. Check all is level and mark the position of the lower Radiator studs. Remove the radiator, fix the lower wall sleeves with supplied fixings. Rehang the radiator and fasten grub screw (D) with a Philips screwdriver.

## 4. Fitting Diverter (threaded plug)

**Determine Correct Orientation for Installation**

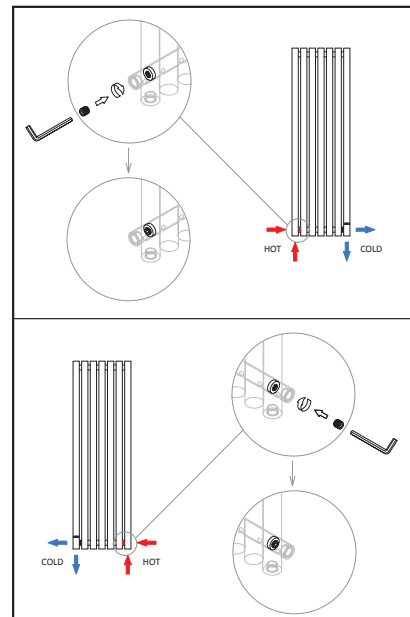
Removable stickers on the product will indicate where the thread is to fit the diverter. This threaded plug will act as a flow diverter, forcing the flow of the water up and over inside the radiator, to achieve even heat distribution of all bars.

**Where to install the threaded plug**

When the product is to be mounted vertically the threaded plug will need to be screwed in on the FLOW side you can choose to have the flow on the left or right hand side.

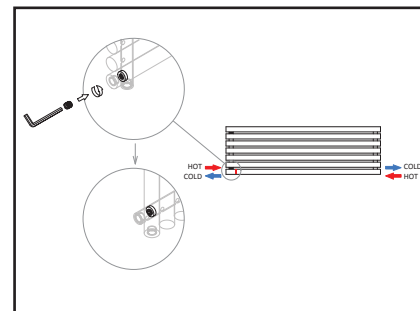
## 4. Fitting Diverter (threaded plug)

**Image A - Vertical models**



**IMAGE A:** The plug is screwed in on the left or right hand side, depending where the flow is entering.

**Image B - Horizontal models**



**IMAGE B:** When the product is to be mounted horizontally the threaded plug needs to be screwed into the left hand side of the radiator. This will force the water efficiently around the radiator whether the flow is coming from the left or the right hand side.

## Technical Specifications

|                                    |                               |
|------------------------------------|-------------------------------|
| <b>Materials</b>                   | Steel                         |
| <b>Connections</b>                 | ½" flow and return.           |
| <b>Test pressure</b>               | 13 Bar                        |
| <b>Testing authority</b>           | Politecnico Di Milano         |
| <b>Maximum operating pressure</b>  | 10 Bar                        |
| <b>Maximum working temperature</b> | 95°C                          |
| <b>Packaging</b>                   | Wrapped in polythene & boxed. |

**PLEASE NOTE:** Systems using micro bore pipe work must have adequate pressure and flow rates for the number and style of radiators on the system.

## Guarantees & Liabilities

This product is guaranteed for 5 years. As we are not the manufacturers of this product we will take all reasonable endeavours to make over to you the benefit of any warranty or guarantee given by the manufacturer.

The guarantees in all cases are subject to the products being installed in accordance with British and or European standards as well as these fitting instructions. The guarantees in all cases are restricted to the free of charge replacement or repair of the failed product only. Our liability will under no circumstances extend beyond the repair or replacement of the product supplied by us. Claims for either labour in replacement or damage to property are not admissible. Any goods that are returned, in the event of a problem, will belong to us.

## Terms & Conditions

All products must be inspected once removed from the packaging and your point of purchase notified within 28 days of delivery of any scratches, blemishes or other damage. Your point of purchase will then agree appropriate action.

Imperfect radiators should therefore not be fitted and we will not accept responsibility for replacement of scratched or damaged radiators once they have been fitted. This includes any consequential loss or cost of fitting.

If we are not notified within 28 days of the date on the signed delivery note then it will be deemed that we have fully complied with our obligations and claims will not be considered.

Failure to comply with any of the above may invalidate any claims. We recommend that after you check the product on delivery that it is stored in its packaging to prevent damage prior to installation, we cannot accept responsibility for items damaged after delivery.

For full details of our Terms and Conditions please visit [www.supplies4heat.co.uk](http://www.supplies4heat.co.uk) or call us on 01342 306880