

# WITTON Type 22

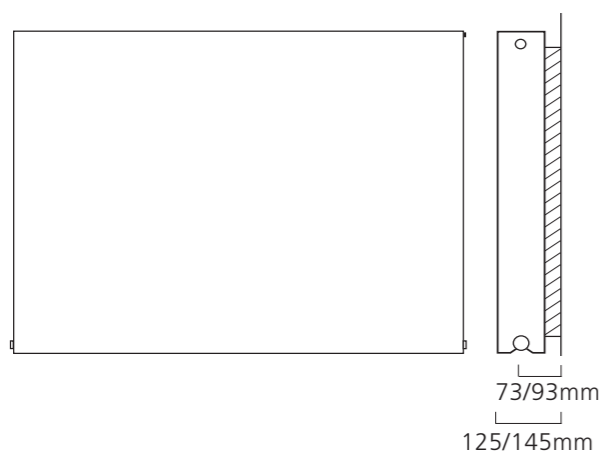
- Grooved Front with Double Flat Panels and Double Convectors
- Available in 3 heights and up to 10 widths
- Standard White RAL 9016 delivered in 48-72 hours
- 25 RAL colours, 8 special finishes, up to 15 working days (page 11)



## Sizes and Prices

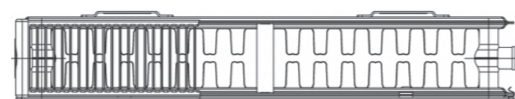
Dimensions (mm)			Output Δt 50°C		Product Code
Height	Width	Depth	Watts	Btu's	
400	800	102	950	3241	WITT408022
	1000	102	1187	4050	WITT401022
	1200	102	1424	4859	WITT401222
500	800	102	1131	3859	WITT508022
	1000	102	1414	4825	WITT501022
	1200	102	1697	5790	WITT501222
	1400	102	1980	6756	WITT501422
600	400	102	652	2225	WITT604022
	600	102	979	3340	WITT606022 ♦
	700	102	1142	3897	WITT607022
	800	102	1305	4453	WITT608022
	900	102	1468	5009	WITT609022
	1000	102	1631	5565	WITT601022
	1100	102	1794	6121	WITT601122
	1200	102	1957	6677	WITT601222
	1400	102	2283	7790	WITT601422
1600	102	2610	8905	WITT601622	

## Pipe Centres and Technical Drawings



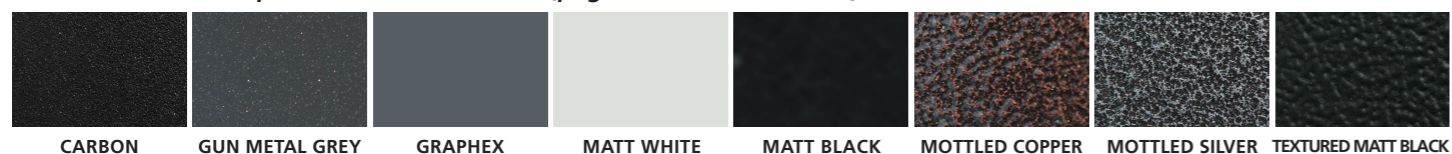
### WITTON Type 22 (K2) Profile

Double steel panels (one front, one back) with double convectors.



Pipe centres left to right = Width plus valves  
 Pipe centres from wall = 73 / 93mm  
 Depth from wall = 125 / 145mm

25 RAL Colours & 8 special finishes available (page 11 for more details)



Please note: Due to printing processes & manufacturing tolerances the colour of finished radiators may vary from the colours represented in this brochure.



+Valves Prices include Angled Chrome or White KINGSTON TRV's

Please specify at time of order

♦ WITTON Type 22 (K2) 600mm x 600mm in RAL 9016 shown with White KINGSTON TRV's & matching Pipe Covers & Shrouds.

## WITTON Horizontal Fitting Instructions

Steel Flat Panel Radiator

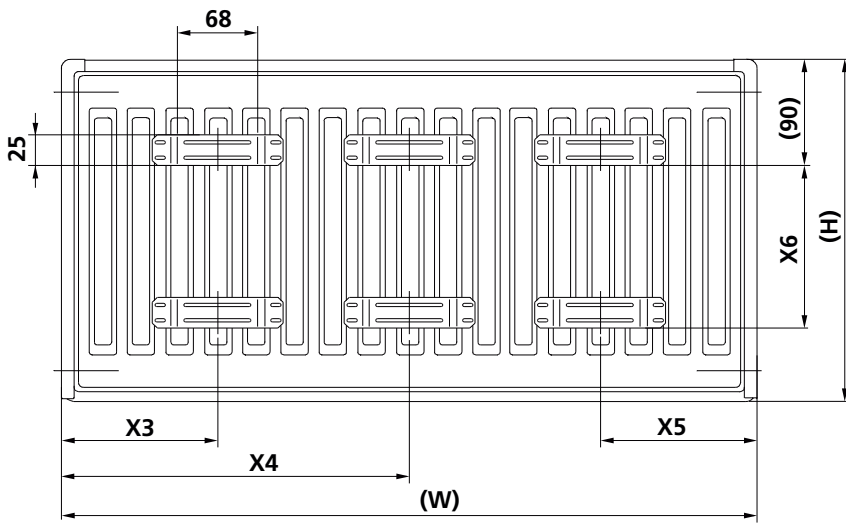
WITTON Type 11(K1), WITTON Type 22 (K2)

Please read these instructions and terms and conditions carefully prior to installation.  
Failure to do so may invalidate the warranty.



### Drawings

Fig 1 - Fixing Positions for Brackets



Bracket drawing



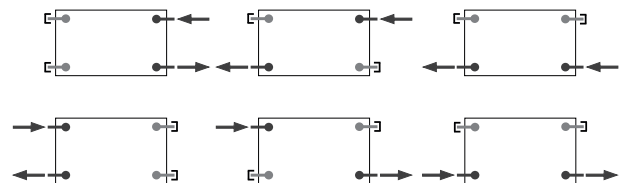
Both the short and long side can be used to hang these radiators

133

Table of Sizes

Width W (mm)		400	500-1600	1800	2000
X3 / X5	Type 11	117	150	150	150
	Type 22	133	133	133	133
X4	Type 11	-	-	883	983
	Type 22	-	-	900	1000

Height H (mm)	300	400	500	600	900
X6	145	245	345	445	745



### Pipe Centres

	WITTON Type 11 (K1)	WITTON Type 22 (K2)
Pipe centres left to right	= width plus valves	width plus valves
Pipe centres from wall	= 48mm/68mm	73mm/93mm
Depth from wall	= 82mm/102mm	125mm/145mm
	<i>shorter/longer side</i>	<i>shorter/longer side</i>

# 1. Unpack & Inspect

This product should have reached you in perfect condition. Please carefully unpack and inspect this radiator and all fittings. Your point of purchase must be notified of any shortages or damage within 28 days of delivery. For further information please see terms and conditions on reverse.

## 2. Contents

You should have:

- 2 x L – Brackets (3 for 1800 to 2000 wide)
- 4 x plastic inserts (6 for 1800 to 2000 wide)
- 4 x 6x50 Screw (6 for 1800 to 2000 wide)
- 4 x Washer (6 for 1800 to 2000 wide)
- 4 x wall plug (6 for 1800 to 2000 wide)

You will need:

- Tape measure
- Electric drill and bits
- Spirit level
- Airvent key
- Appropriate wall fixings
- Spanners for airvents / valves

Cleaning: Steel products can be cleaned using a soft damp cloth with a non-abrasive cleaning product.

## 3. Installing radiator

1. Position the radiator against the wall in the desired position. Lightly mark either side of the radiator.
2. Mark up position of brackets referring to **Fig 1** for precise measurements. Using a spirit level mark on the vertical lines on bracket positions.
3. Ascertain desired height of radiator and mark. Measure down 112mm from the desired height and mark on vertical line. This will give the position of the top fixing point of the bracket. Offer up bracket to this mark and on the vertical line mark position of lower fixing point. Repeat for other bracket(s) ensuring brackets are straight horizontally.
4. Fix brackets with suitable fixings, fit plastic inserts, hang radiator and fix pipework.

## 4. Commission Radiator

**Please Note: In accordance with Part L1 2006 of the Building Regulations and BS7593:1992 code of practice for the treatment of hot water and central heating systems, we strongly recommend flushing the heating system post installation of new radiators and then adding the correct quantity and type of inhibitor for use with your radiator and system to prevent corrosion. Damage caused to systems not protected by a suitable inhibitor will not be covered by manufacturer's guarantee.**

---

## Technical Specifications

<b>Materials</b>	Steel
<b>Connections</b>	½" flow and return.
<b>Test pressure</b>	13 Bar
<b>Testing authority</b>	EN442
<b>Maximum operating pressure</b>	10 Bar
<b>Maximum working temperature</b>	110°C
<b>Packaging</b>	Corrugated cardboard, plastic reinforcing corner covers, polyethylene shrinking foil.

## Guarantees & Liabilities

This product is guaranteed for 10 years. As we are not the manufacturers of this product we will take all reasonable endeavours to make over to you the benefit of any warranty or guarantee given by the manufacturer.

The guarantees in all cases are subject to the products being installed in accordance with British and or European standards as well as these fitting instructions. The guarantees in all cases are restricted to the free of charge replacement or repair of the failed product only. Our liability will under no circumstances extend beyond the repair or replacement of the product supplied by us. Claims for either labour in replacement or damage to property are not admissible. Any goods that are returned, in the event of a problem, will belong to us.

## Terms & Conditions

All products must be inspected once removed from the packaging and your point of purchase notified within 28 days of delivery of any scratches, blemishes or other damage. Your point of purchase will then agree appropriate action.

Imperfect radiators should therefore not be fitted and we will not accept responsibility for replacement of scratched or damaged radiators once they have been fitted. This includes any consequential loss or cost of fitting.

If we are not notified within 28 days of the date on the signed delivery note then it will be deemed that we have fully complied with our obligations and claims will not be considered.

Failure to comply with any of the above may invalidate any claims. We recommend that after you check the product on delivery that it is stored in its packaging to prevent damage prior to installation, we cannot accept responsibility for items damaged after delivery.

For full details of our Terms and Conditions please visit [www.supplies4heat.co.uk](http://www.supplies4heat.co.uk) or call us on 01342 306880.