

# Iris



Dual Fuel options see pages 116-117

600mm x 1000mm with Chrome 3 Style Corner valves



1200mm x 500mm shown with Chrome 3 Style Corner valves

# Iris shown on pages 110-111

Stainless Steel; 22mm cross tubes  
 Suitable for a direct system, Hydronic & Electric Models  
 UKCA approved & certified to BS EN442

Polished Stainless Steel

## Stock Polished Stainless Steel: 48-72 Hours

Made to Order electric: Up to 3 weeks:



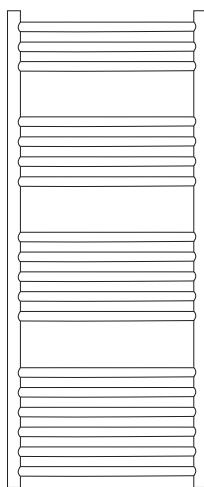
**SAVE MONEY!** WHEN YOU BUY OUR **CYLINDER KIT** WITH ANY TOWEL RAIL ORDER\*  
 QUOTE **PROMOV3** AT TIME OF ORDER

Available in White or Chrome

Pipe centres left to right	Pipe centres from wall	Depth from wall
width - 32mm	84mm	100mm

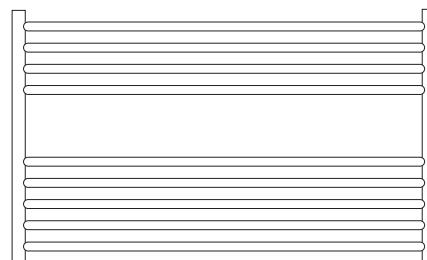
## Stock options Polished Stainless Steel - Standard

Height (mm)	Width (mm)	Model	Watts $\Delta t 50^{\circ}c$	Btu's $\Delta t 50^{\circ}c$
800	500	IRIS8050S	198	676
	600	IRIS8060S	233	795
1200	300	IRISI230S	217	740
	500	IRISI250S	314	1071
	600	IRISI260S	371	1266



## Stock options Polished Stainless Steel - Horizontal

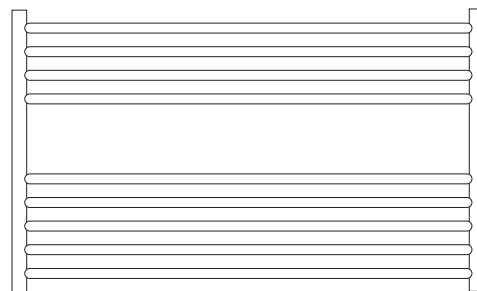
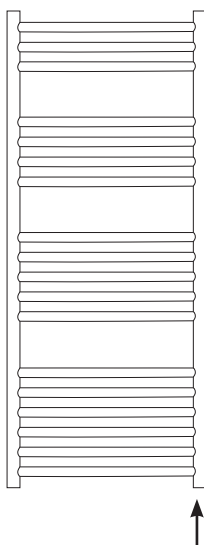
Height (mm)	Width (mm)	Model	Watts $\Delta t 50^{\circ}c$	Btu's $\Delta t 50^{\circ}c$
600	1000	IRIS6010S	517	1764
800	1000	IRIS8010S	682	2327



## Made to order options - Standard electric

Height (mm)	Width (mm)	Model	Watts $\Delta t 50^{\circ}c$
800	500	IRIS8050ES	125
	600	IRIS8060ES	150
1200	300	IRISI230ES	125
	500	IRISI250ES	200
	600	IRISI260ES	200

Supplied with standard element and powered from a switched fused spur.



Position of element for electric models

## Made to order options - Horizontal electric

Height (mm)	Width (mm)	Model	Watts $\Delta t 50^{\circ}c$
600	1000	IRIS6010ES	125
800	1000	IRIS8010ES	150

Supplied with standard element and powered from a switched fused spur.

Position of element for electric models

\*Saving based on the value of individual items when bought separately. Order any of our selected valves & matching pipe covers at the same time as your radiator; PROMOV3W (white), PROMOV3C (chrome).

## Technical Specifications

Materials	Stainless Steel
Connections	½" flow and return
Test pressure	6.9 Bar
Testing authority	EN442
Maximum operating pressure	1.5 Bar
Maximum working temperature	80 °C
Packaging	Plastic wrapping with polystyrene and foam protection in cardboard box

**PLEASE NOTE:** Systems using micro bore pipework must have adequate pressure and flow rates for the number and style of radiators on the system.

## Terms & Conditions

All products must be inspected once removed from the packaging and The Radiator Company notified within 28 days of delivery of any scratches, blemishes or other damage. The Radiator Company will then replace the radiator.

Imperfect radiators should therefore not be fitted and The Radiator Company will not accept responsibility for replacement of scratched or damaged radiators once they have been fitted. This includes any consequential loss or cost of fitting.

If The Radiator Company are not notified within 28 days of the date on the signed delivery note then it will be deemed that The Radiator Company have fully complied with its obligations and claims will not be considered.

Failure to comply with any of the above may invalidate any claims.

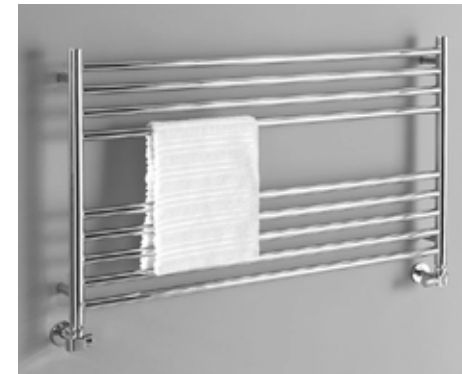
We recommend that after you check the product on delivery that it is stored in its packaging to prevent damage prior to installation. The Radiator Company cannot accept responsibility for items damaged after delivery.

## Guarantees & Liabilities

As we are not the manufacturers of this product we will take all reasonable endeavours to make over to you the benefit of any warranty or guarantee given by the manufacturer, which is usually five years on most of our range. (Copies of specific guarantees for any of our products are available on request).

The guarantees in all cases are subject to the products being installed in accordance with British and or European standards as well as these fitting instructions. The guarantees in all cases are restricted to the free of charge replacement or repair of the failed product only. Our liability will under no circumstances extend beyond the repair or replacement of the product supplied by us. Claims for either labour in replacement or damage to property are not admissible. Any goods that are returned, in the event of a problem, will belong to The Radiator Company.

## Fittings Instructions



The Iris is a practical towel rail constructed from polished stainless steel and is available in nine sizes.

Please read these instructions and terms and conditions carefully prior to installation. Failure to do so may invalidate the warranty

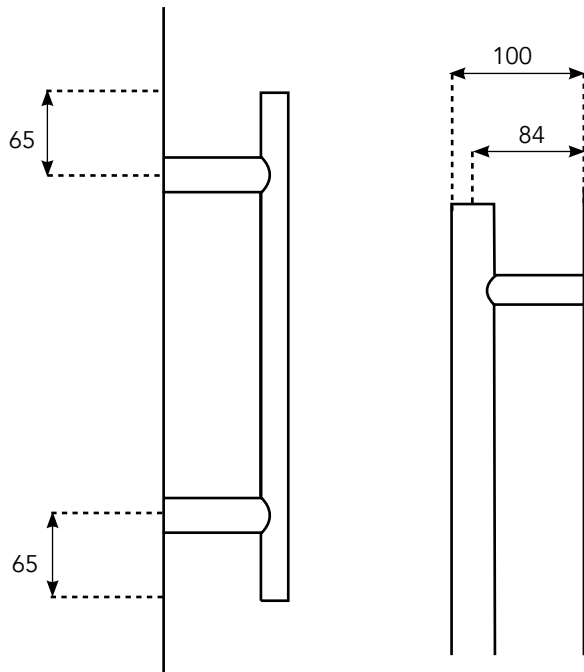
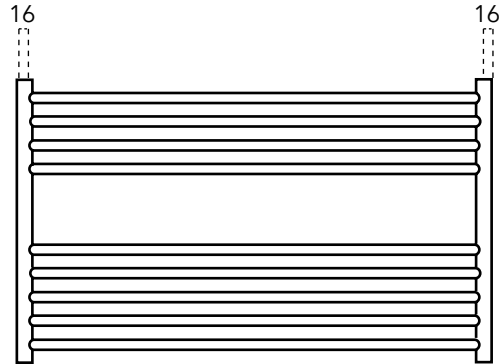
The Radiator Company  
Units 13 - 14 Charlwoods Road  
East Grinstead  
West Sussex  
RH19 2HU



IRIS1.3

## Diagrams of Iris

Same dimensions for horizontal and vertical Iris



## Pipe Centres

Pipe centres left to right	width - 32mm
Pipe centres from wall	84mm
Depth from wall	100mm

## 1 Unpack & Inspect

The Radiator Company prides itself on selecting products from manufacturers who exercise tight quality control measures. We only select models with excellent standards of welding and brazing, as well as high quality finishes. All of our products are well packaged and should reach you in perfect condition. Just in case however, we offer a minimum 5-year no quibble guarantee for all radiators and towel rails.

The Radiator Company must be notified of any shortages or damage within 28 days of delivery. For further information please see terms and conditions on back page.



## 2 Contents

You should have:

- 1 Radiator
- 4 Wall brackets
- 1 Airvent

You will need:

- Tape measure
- Electric drill and bits
- Spirit level

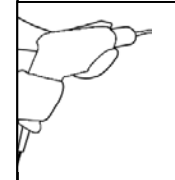
## 3 Mark Bracket Positions

The fixing positions for the two top brackets are measured at 16mm in from either end of the top of the radiator and measured down 65mm (please see diagram opposite).

In order to accurately mark the bottom bracket fixing positions we recommend you mark, fix and level the two top brackets first. Then hang the radiator, ensuring it is vertically level and manually hold the bottom brackets in position while marking.

## 4 Fix Brackets

Using a suitable drill bit, screws and plugs, fix the brackets and level with a spirit level. Please see diagrams.



PLEASE NOTE :

It is essential that all brackets are level to ensure a vertical alignment for connecting the pipework.

## 5 Commission

Please Note:

In accordance with Part L1 2006 of the Building Regulations and BS7593:1992 code of practice for the treatment of hot water and central heating systems, we strongly recommend flushing the heating system post installation of new radiators and then adding the correct quantity and type of inhibitor for use with your radiator and system to prevent corrosion. Damage caused to systems not protected by a suitable inhibitor will not be covered by manufacturer's guarantee.