

Vox



590mm x 740mm in White RAL 9010 with White Ideal TRV's



1846mm x 340mm in RAL 9006 White Aluminium with Nickel Corner Ideal TRV's



High quality Italian design & manufacture.  
Sectional Aluminium. UKCA approved & certified to BS EN442

White RAL 9010 as standard, 25 RAL colours plus 30 Special Finishes  
Please call **01342 302250** for a RAL or Special Finish chart  
Colour Co-ordination Service available, see pages 6-7 for full details.

**Stock White RAL 9010: 48-72 Hours**  
Colours & Finishes: Up to 3 weeks (please allow up to 5 weeks for orders of more than 10 radiators in colours or special finishes)

Choose from our assembled stock options or build your own size by individual section, visit **www.theradiatorcompany.co.uk** to use our radiator builder.

Assembled stock options RAL 9010

440mm High

Height (mm)	Width (mm)	Sections	Model	Watts Δt 50°C	Btu's Δt 50°C
440	420	5	VOXS44X5	475	1621
	500	6	VOXS44X6	570	1945
	580	7	VOXS44X7	665	2269
	660	8	VOXS44X8	760	2593
	740	9	VOXS44X9	855	2917
	820	10	VOXS44X10	950	3241
	900	11	VOXS44X11	1045	3566
	980	12	VOXS44X12	1140	3890
	1060	13	VOXS44X13	1235	4214
	1140	14	VOXS44X14	1330	4538
	1220	15	VOXS44X15	1425	4862
	1300	16	VOXS44X16	1520	5186
	1380	17	VOXS44X17	1615	5510
	1460	18	VOXS44X18	1710	5835
	1540	19	VOXS44X19	1805	6159
	1620	20	VOXS44X20	1900	6483

590mm High

Height (mm)	Width (mm)	Sections	Model	Watts Δt 50°C	Btu's Δt 50°C
590	420	5	VOXS59X5	635	2167
	500	6	VOXS59X6	762	2600
	580	7	VOXS59X7	889	3033
	660	8	VOXS59X8	1016	3467
	740	9	VOXS59X9	1143	3900
	820	10	VOXS59X10	1270	4333
	900	11	VOXS59X11	1397	4767
	980	12	VOXS59X12	1524	5200
	1060	13	VOXS59X13	1651	5633
	1140	14	VOXS59X14	1778	6067
	1220	15	VOXS59X15	1905	6500
	1300	16	VOXS59X16	2032	6933
	1380	17	VOXS59X17	2159	7367
	1460	18	VOXS59X18	2286	7800
	1540	19	VOXS59X19	2413	8233
	1620	20	VOXS59X20	2540	8666

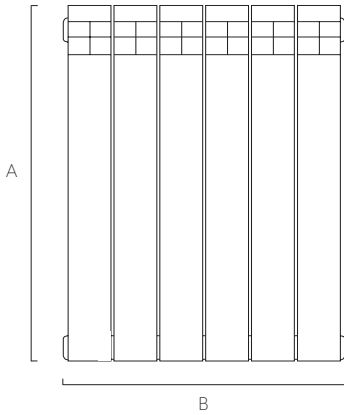


**SAVE MONEY!** WHEN YOU BUY OUR **IDEAL TRV KIT** WITH ANY DESIGNER ORDER\*QUOTE **PROMOVI** AT TIME OF ORDER

Available in White or Chrome

Widths include measurement for bushes

Quoted prices include plugs, bushes, air vent and wall brackets.



Pipe centres left to right	Pipe centres from wall	Depth from wall
width + valves	67mm to 71mm	114mm to 118mm

Assembled stock options RAL 9010

690mm High

Height (mm)	Width (mm)	Sections	Model	Watts Δt 50°C	Btu's Δt 50°C
690	420	5	VOXS69X5	730	2491
	500	6	VOXS69X6	876	2989
	580	7	VOXS69X7	1022	3487
	660	8	VOXS69X8	1168	3985
	740	9	VOXS69X9	1314	4483
	820	10	VOXS69X10	1460	4982
	900	11	VOXS69X11	1606	5480
	980	12	VOXS69X12	1752	5978
	1060	13	VOXS69X13	1898	6476
	1140	14	VOXS69X14	2044	6974
	1220	15	VOXS69X15	2190	7472
	1300	16	VOXS69X16	2336	7970
	1380	17	VOXS69X17	2482	8469
	1460	18	VOXS69X18	2628	8967
	1540	19	VOXS69X19	2774	9465
	1620	20	VOXS69X20	2920	9963

1646mm High

Height (mm)	Width (mm)	Sections	Model	Watts Δt 50°C	Btu's Δt 50°C
1646	260	3	VOXSI6X3	813	2774
	340	4	VOXSI6X4	1084	3699
	420	5	VOXSI6X5	1355	4623
	500	6	VOXSI6X6	1626	5548
	580	7	VOXSI6X7	1897	6473
	660	8	VOXSI6X8	2168	7397
	740	9	VOXSI6X9	2439	8322
	820	10	VOXSI6X10	2710	9247

1846mm High

Height (mm)	Width (mm)	Sections	Model	Watts Δt 50°C	Btu's Δt 50°C
1846	260	3	VOXSI8X3	891	3040
	340	4	VOXSI8X4	1188	4053
	420	5	VOXSI8X5	1485	5067
	500	6	VOXSI8X6	1782	6080
	580	7	VOXSI8X7	2079	7094
	660	8	VOXSI8X8	2376	8107
	740	9	VOXSI8X9	2673	9120
	820	10	VOXSI8X10	2970	10134

Stock options by section RAL 9010

Outputs & price given per section, see page 176 for help on sizing your radiator or visit **www.theradiatorcompany.co.uk** where you will find our radiator builder.

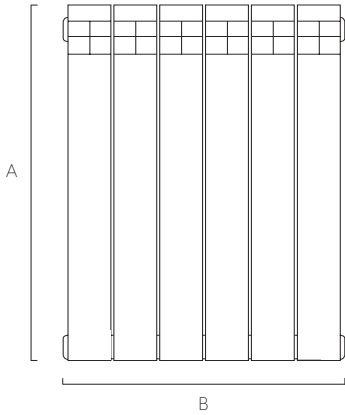
Height (mm)	Width (mm)	Model	Watts Δt 50°C	Btu's Δt 50°C
440	80	VOX44	95	324
590		VOX59	127	433
690		VOX69	146	498
1646		VOX16	271	925
1846		VOX18	297	1013

Note: Supplied pre-assembled in up to 20 sections (1600mm), wider radiators must be joined on site.

1646mm & 1846mm supplied pre-assembled in up to 10 sections (800mm), wider radiators must be joined on site.

Widths include measurement for bushes

Quoted prices include plugs, bushes, air vent and wall brackets.



Pipe centres left to right	Pipe centres from wall	Depth from wall
width + valves	67mm to 71mm	114mm to 118mm

Pipe centres left to right	Pipe centres from wall	Depth from wall
number of sections x 80mm + 20mm bushes + valves	67mm to 71mm	114mm to 118mm

## Technical Specifications

Material	Aluminium
Connections	1/2" flow and return
Test Pressure	9 Bar
Testing Authority	EN442
Maximum operating pressure	6 Bar
Maximum working temperature	100°C
Packaging	Wrapped in polythene and boxed
Cleaning	Soft damp cloth with nonabrasive cleaning product

**PLEASE NOTE:** To reduce the possibility of noise caused by rapid heating and cooling of aluminium radiators; adequate capacity for expansion must be provided within the overall heating system. Systems using micro bore pipework must have adequate pressure and flow rates for the number and style of radiators on the system.

## Terms & Conditions

All products must be inspected once removed from the packaging and The Radiator Company notified within 28 days of delivery of any scratches, blemishes or other damage. The Radiator Company will then replace the radiator.

Imperfect radiators should therefore not be fitted and The Radiator Company will not accept responsibility for replacement of scratched or damaged radiators once they have been fitted. This includes any consequential loss or cost of fitting.

If The Radiator Company are not notified within 28 days of the date on the signed delivery note then it will be deemed that The Radiator Company have fully complied with its obligations and claims will not be considered.

Failure to comply with any of the above may invalidate any claims.

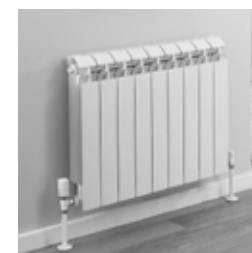
We recommend that after you check the product on delivery and that it is stored in its packaging to prevent damage prior to installation. The Radiator Company cannot accept responsibility for items damaged after delivery.

## Guarantees & Liabilities

As we are not the manufacturers of this product we will take all reasonable endeavours to make over to you the benefit of any warranty or guarantee given by the manufacturer, which is usually five years on most of our range. (Copies of specific guarantees for any of our products are available on request).

The guarantees in all cases are subject to the products being installed in accordance with British and or European standards as well as these fitting instructions. The guarantees in all cases are restricted to the free of charge replacement or repair of the failed product only. Our liability will under no circumstances extend beyond the repair or replacement of the product supplied by us. Claims for either labour in replacement or damage to property are not admissible. Any goods that are returned, in the event of a problem, will belong to The Radiator Company.

## Fittings Instructions



Aluminium radiators offer simple, contemporary styling matched with great outputs and economical efficiency.

Please read these instructions and terms and conditions carefully prior to installation. Failure to do so may invalidate the warranty.

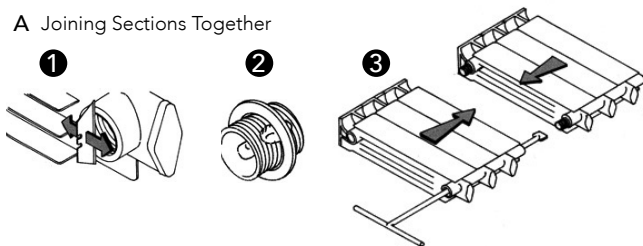
The Radiator Company  
Units 13 - 14 Charlwoods Road  
East Grinstead  
West Sussex  
RH19 2HU



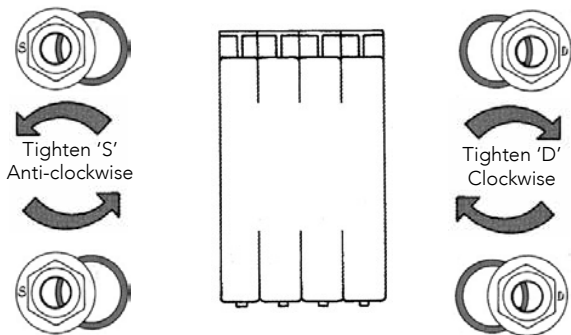
ALUM\_IR\_1.0

## Diagrams of Aluminium Radiators

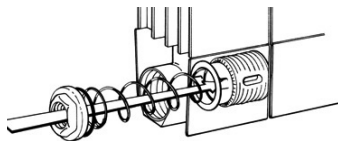
### A Joining Sections Together



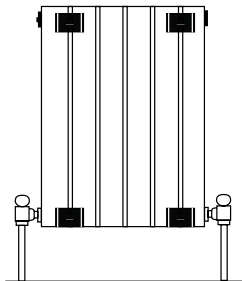
### B Standard Configuration of Bushes



### C Diverter Installation for Oscar



### D Placement of Wall Brackets



## Pipe Centres

### Pipe centres left to right

no. sections x 80mm + 20mm bushes + valves

### Pipe centres from wall

67mm to 71mm

### Depth from wall

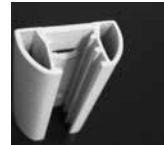
114mm to 118mm

## Brackets

E



F



G



## 1 Unpack & Inspect

The Radiator Company prides itself on selecting products from manufacturers who exercise tight quality control measures. We only select models with excellent standards of welding and brazing, as well as high quality finishes. All of our products are well packaged and should reach you in perfect condition. Just in case however, we offer a 10 year no quibble guarantee for all aluminium radiators.



Please carefully unpack and inspect this radiator and all fittings. The Radiator Company must be notified of any shortages or damage within 28 days of delivery. For further information please see terms and conditions on back page.

## 2 Contents

	up to 20 sections	21 - 30 sections	31 plus sections
• Wall Brackets	4	6	8

### 1 Fittings pack including:

- 4 Bushes with gaskets
- 1 Airvent
- 1 Blanking Plug, if your radiator requires a plug
- 1 Air vent key

### For Oscar

- All above plus 1 Spring diverter

## 3 Joining Sections

**Very long radiators may require on-site assembly.**

1. Remove excess paint from the four radiator faces to be joined together by scraping a flat knife blade across the surface.

2. Place both halves to be assembled on a flat even surface and align the joining surfaces. The radiator sections and joining nipples have one left and one right hand thread - the Nipples must be inserted correctly to avoid cross threading. **The end of the nipple with the right hand thread has a smooth edge; the end with the left hand thread has a serrated edge.** Carefully insert the barrel nipples into both waterways on one half, taking care not to damage the threads, these can be screwed in a couple of turns each. Apply a little jointing compound to the soft fibre gasket and position this gasket within the central groove on the nipple (excluding the Oscar which is a dry fit)

3. Carefully insert the joining key through the collector until it locates the barrel nipple and gradually close the halves by equal amounts until tight (please see diagram).

## 4 Fit Bushes

### IMPORTANT NOTE:

Aluminium radiators have specific left and right hand threaded bushes and these can be easily damaged if forced or incorrectly fitted (this will inevitably cause leaks). **Bushes require a dry fit connection only; you must not use any Compound materials (e.g. Jet Blue) or Plumbers Hemp.** If you choose you may use up to 4 turns of PTFE tape to help seal the threads (the tape should be applied in the direction of the thread and no more than this amount should be used as this may cause leaks to occur)

If looking directly at the front of the radiator, the two bushes with an 'S' cast on them are positioned on the left and turned anti-clockwise. The two bushes cast with a 'D' are positioned on the right and turned clockwise.

**Please see Diagram B.**

## 5 Fit Diverter (Oscar only)

Oscar radiators over 1 metre tall are supplied with a spring diverter, which is installed in the lower waterway at either end.

This is installed by pushing the cap firmly in the waterway until it locates against the barrel nipple and is retained in place by the bush. The flow must enter this end first (please see diagram C).

## 6 Mark Brackets

You will have been supplied with a suitable amount of brackets for your radiator (see picture E and Contents).

The brackets are typically positioned one section in from either end with extra brackets spaced at equal distances between these two.

The two piece brackets can be adjusted both vertically, using the large dome head screw and front to back using the two positions in which the bracket hook can be placed (see picture F and G).

## 7 End Panels (if ordered with Vip or Oscar)

If you have end panels with your radiator, these will have a chrome cap that clips on top and a black clip that slides into the panel from the bottom which will click down onto the fins to secure.

## 8 Hang Radiator & Commission

With the brackets firmly fixed and level, the radiator is lowered directly onto the brackets. Connect valves and refill system, adding the correct inhibitor and check for leaks.

**Please Note:** In accordance with Part L1 2006 of the Building Regulations and BS7593:1992 code of practice for the treatment of hot water and central heating systems, we strongly recommend flushing the heating system post installation of new radiators and then adding the correct quantity and type of inhibitor for use with your radiator and system to prevent corrosion. Damage caused to systems not protected by a suitable inhibitor will not be covered by manufacturer's guarantee.