

## Step BDO



BDO Step 430mm x 1500mm shown in White Pearl



# Step BDO shown on page 90

High quality Italian design & manufacture  
Aluminium; horizontal towel rail  
10 year guarantee, UKCA approved & certified to BS EN442

White Pearl & Chrome

Made to Order:  
Up to 5 weeks: White Pearl & Chrome



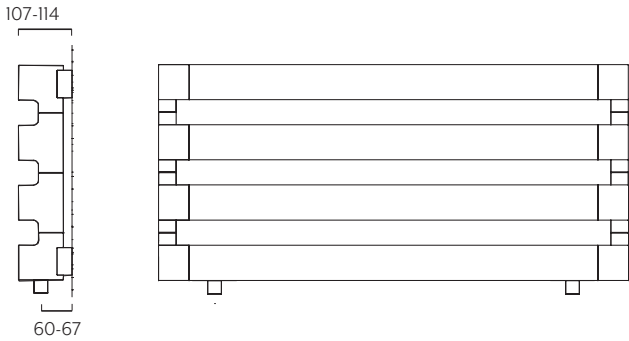
**SAVE MONEY!** WHEN YOU BUY OUR **CYLINDER KIT** WITH ANY TOWEL RAIL ORDER\*  
QUOTE **PROMOV3** AT TIME OF ORDER

Available in White or Chrome

Pipe centres left to right	Pipe centres from wall	Depth from wall
width - 224mm	60mm - 67mm	107mm - 114mm

Made to order options - White Pearl

Height (mm)	Width (mm)	Model	Watts $\Delta t 50^{\circ}c$	Btu's $\Delta t 50^{\circ}c$
310	1500	STEBDO3115WP	466	1590
	1800	STEBDO3118WP	559	1907
430	1500	STEBDO4315WP	624	2129
	1800	STEBDO4318WP	749	2556



Made to order options - Chrome

Height (mm)	Width (mm)	Model	Watts $\Delta t 50^{\circ}c$	Btu's $\Delta t 50^{\circ}c$
310	1500	STEBDO3115	326	1112
	1800	STEBDO3118	391	1334
430	1500	STEBDO4315	436	1488
	1800	STEBDO4318	524	1788



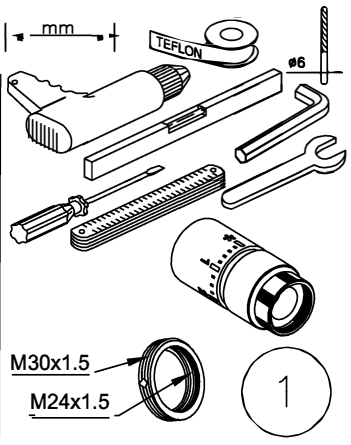
Chrome

\*Saving based on the value of individual items when bought separately. Order any of our selected valves & matching pipe covers at the same time as your radiator; PROMOV3W (white), PROMOV3C (chrome).

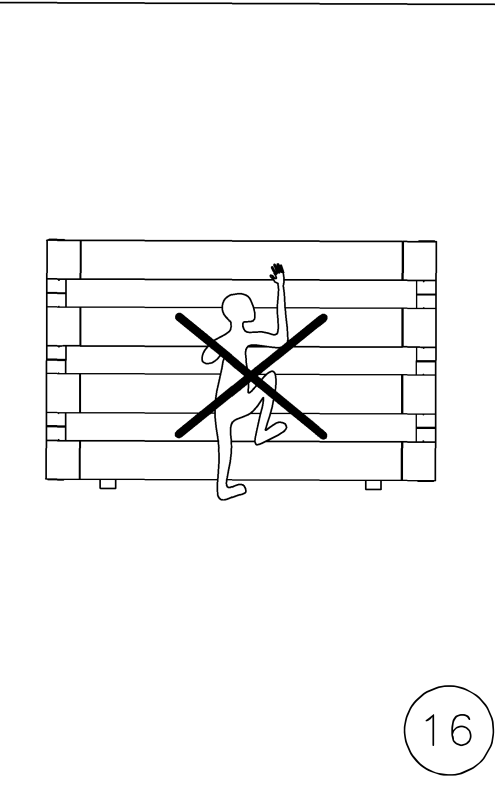
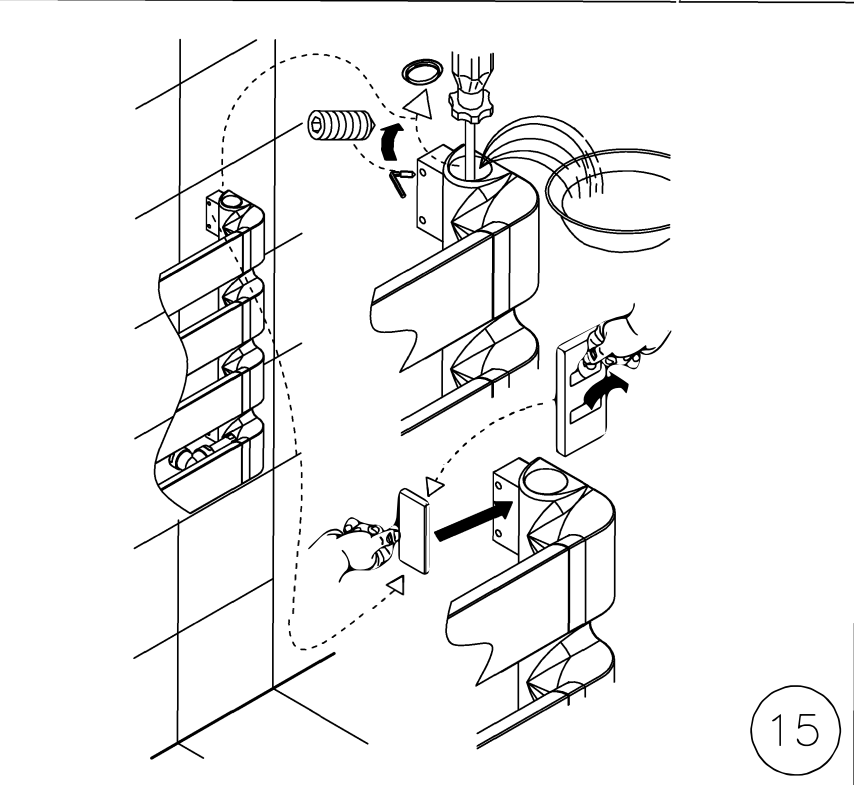
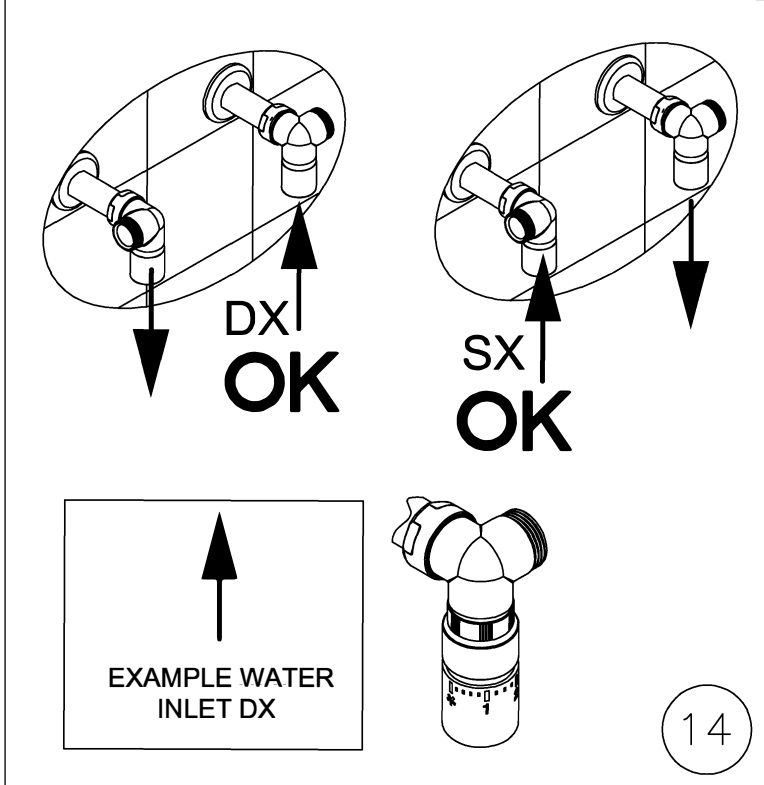
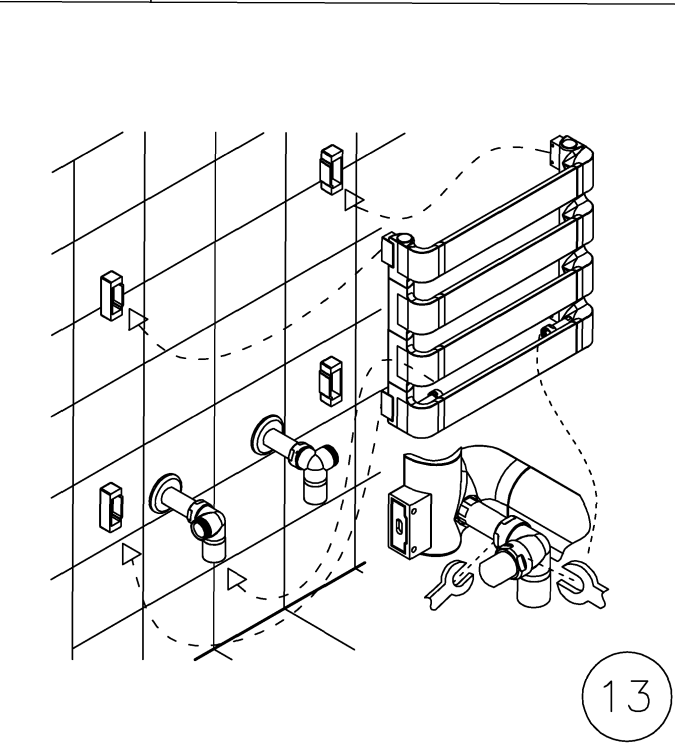
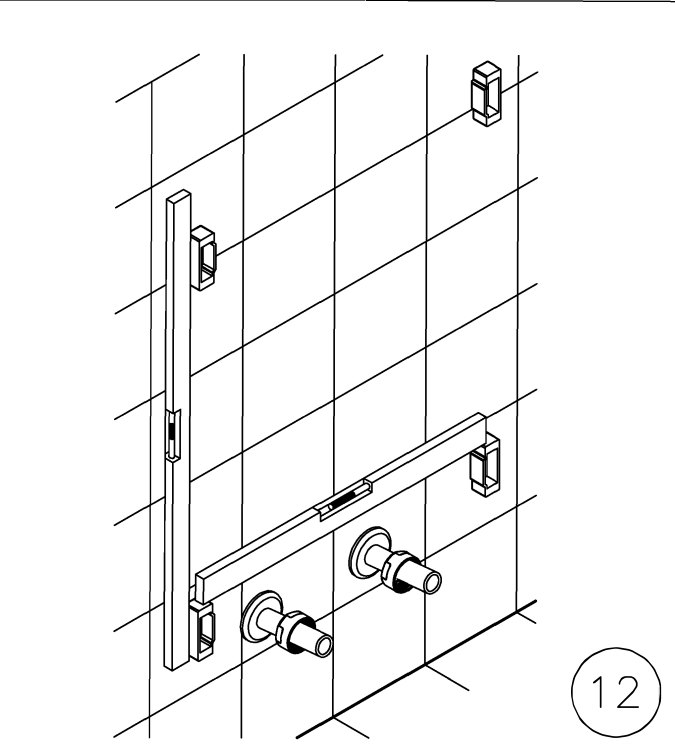
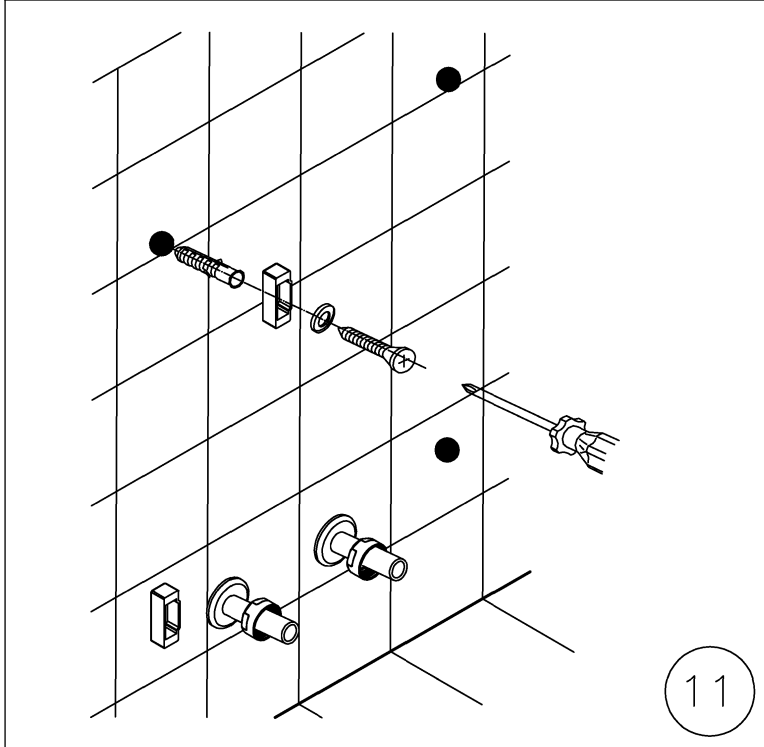
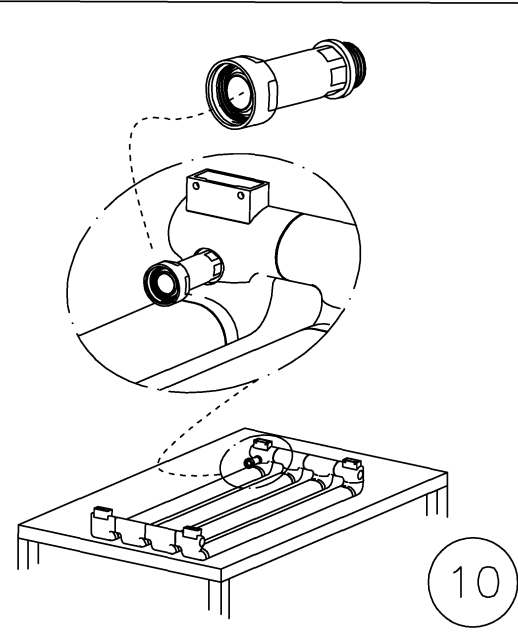
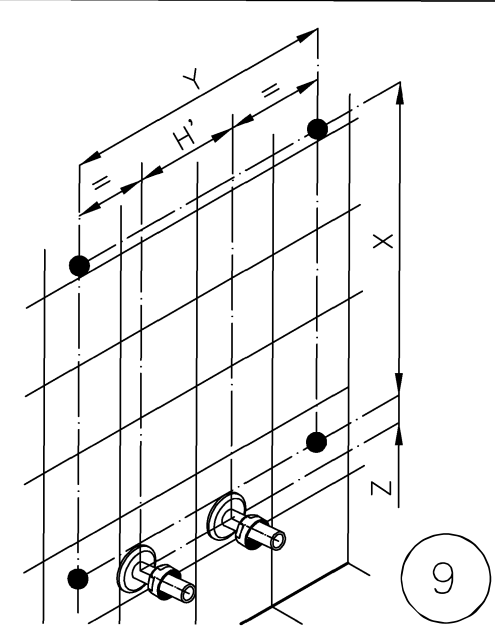
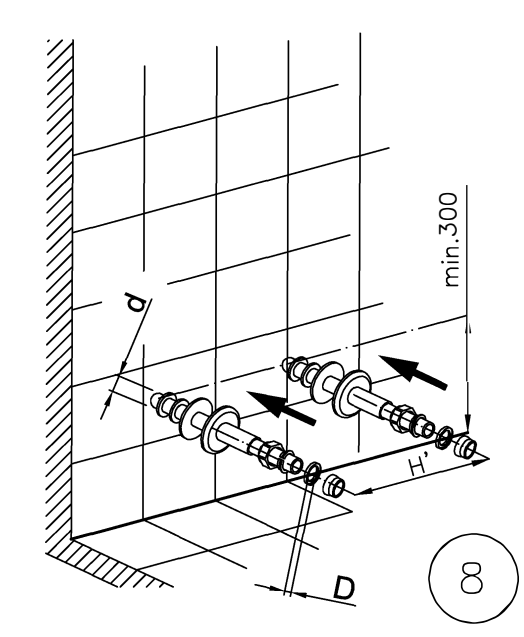
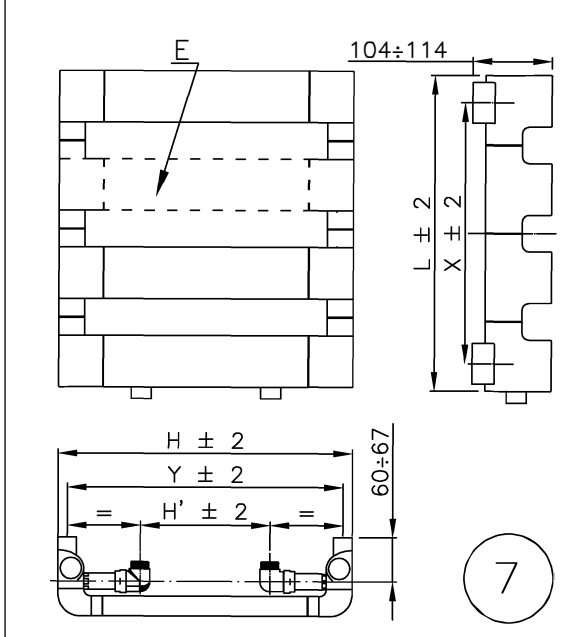
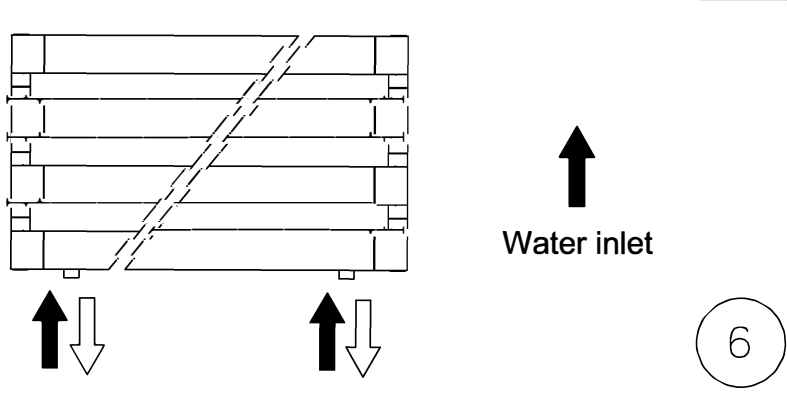
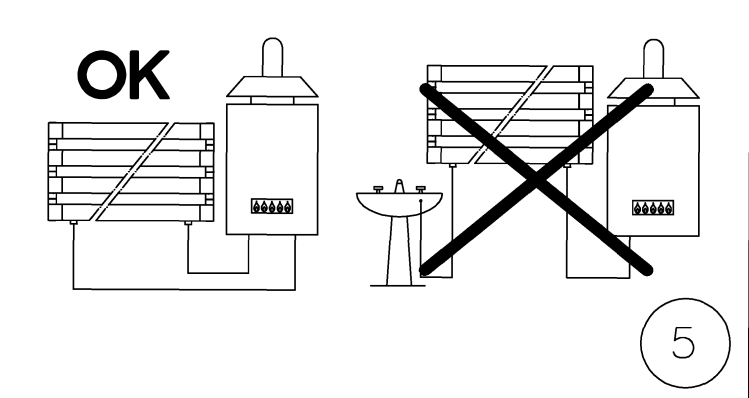
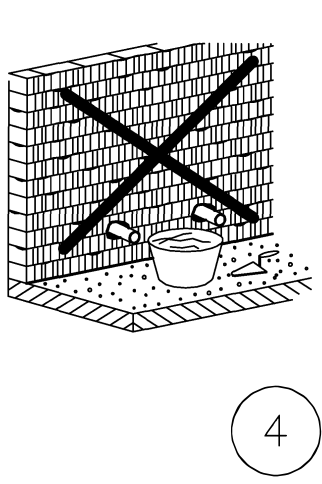
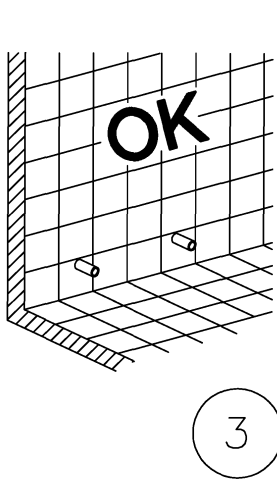
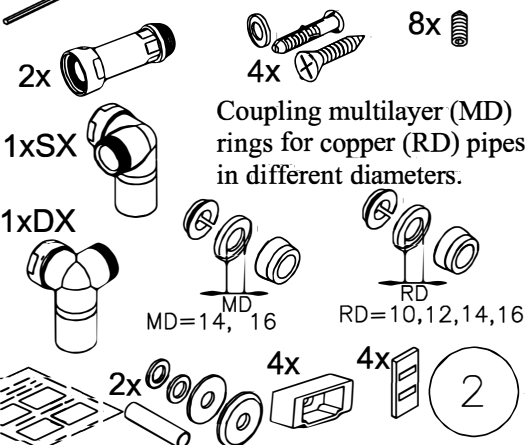
# BDO STEP

## Fitting Instructions

### Accessories not included



### Accessories included



COMMISSION

Please Note: In accordance with Part L1 2006 of the Building Regulations and BS7593:1992 code of practice for the treatment of hot water and central heating systems, we strongly recommend flushing the heating system post installation of new radiators and then adding the correct quantity and type of inhibitor for use with your radiator and system to prevent corrosion. Damage caused to systems not protected by a suitable inhibitor will not be covered by manufacturer’s guarantee.

TECHNICAL SPECIFICATIONS

Materials	Mild Steel.
Connections	½ flow and return.
Test pressure	6 Bar
Testing authority	EN 442
Maximum operating pressure	4 Bar
Maximum working temperature	95°C
Packaging	Wrapped in polyethylene with cardboard box.
<b>PLEASE NOTE:</b> Systems using micro bore pipework must have adequate pressure and flow rates for the number and style of radiators on the system.	

TERMS & CONDITIONS

All products must be inspected once removed from the packaging and The Radiator Company notified within 28 days of delivery of any scratches, blemishes or other damage.

The Radiator Company will then replace the radiator.

Imperfect radiators should therefore not be fitted and The Radiator Company will not accept responsibility for replacement of scratched or damaged radiators once they have been fitted. This includes any consequential loss or cost of fitting.

If The Radiator Company are not notified within 28 days of the date on the signed delivery note then it will be deemed that The Radiator Company have fully complied with its obligations and claims will not be considered.

Failure to comply with any of the above may invalidate any claims.

We recommend that after you check the product on delivery that it is stored in its packaging to prevent damage prior to installation. The Radiator Company cannot accept responsibility for items damaged after delivery.

GUARANTEES & LIABILITIES

This product is guaranteed for 10 years . The guarantee is subject to the product being installed in accordance with British and or European standards as well as these fitting instructions. The guarantee in all cases are restricted to the free of charge replacement or repair of the failed product only. Our liability will under no circumstances extend beyond the repair or replacement of the product supplied by us. Claims for either labour in replacement or damage to property are not admissible. Any goods that are returned, in the event of a problem, will belong to The Radiator Company.

The Radiator Company  
Units 13 - 14 Charlwoods Road  
East Grinstead  
West Sussex  
RH19 2HU

A brand of **IRSAP** , Italy’s leading manufacturer of design led radiators.

If you have any questions please contact us on 01342 302250  
[www.theradiatorcompany.co.uk](http://www.theradiatorcompany.co.uk)