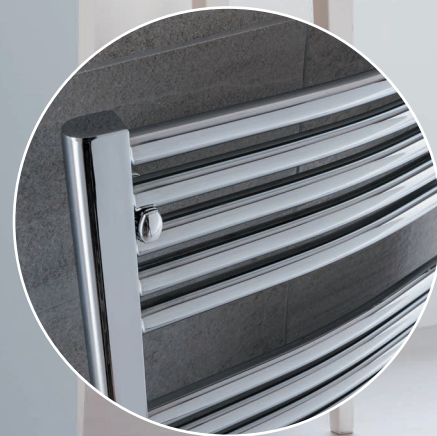


Poppy



White 1497mm x 598mm with White Cylinder valves



Chrome option



Dual Fuel options see pages 116-117



RAL 9005 1497mm x 398mm with Chrome 3 Style Corner valves

Poppy Towel Rail pages 106-107

High quality Italian design & manufacture
Steel; 25mm curved cross tubes with 40mm 'D' shaped collectors
UKCA approved & certified to BS EN442

White RAL 9016 as standard, 25 RAL colours plus 30 Special Finishes + Chrome
Please call **01342 302250** for a RAL or Special Finish chart.

Stock White RAL 9016 & Chrome: 48-72 Hours

Made to Order colours: Up to 3 weeks

Up to 6 weeks for White electric, 8 weeks for Chrome electric



Cylinder Valve Kit



SAVE MONEY! WHEN YOU BUY OUR
CYLINDER KIT WITH ANY TOWEL RAIL ORDER*
QUOTE **PROMOV3** AT TIME OF ORDER

Available in White or Chrome

Pipe centres left to right	Pipe centres left to right	Depth from wall
width - 44mm	398mm wide = 70mm-80mm 498mm wide = 68mm-78mm 598mm wide = 68mm-78mm	398mm wide = 95mm-105mm 498mm wide = 100mm-110mm 598mm wide = 105mm-115mm

Stock options White RAL 9016

Height (mm)	Width (mm)	Model	Watts Δt 50°C	Btu's Δt 50°C
718	398	POPP7139	296	1010
	498	POPP7149	351	1198
	598	POPP7159	406	1385
1210	398	POPP1239	472	1610
	498	POPP1249	557	1900
	598	POPP1259	641	2187
1497	398	POPP1439	578	1972
	498	POPP1449	682	2327
	598	POPP1459	785	2678
1866	398	POPP1839	722	2463
	498	POPP1849	851	2904
	598	POPP1859	980	3344

Stock options Chrome

Height (mm)	Width (mm)	Model	Watts Δt 50°C	Btu's Δt 50°C
718	398	POPP7139C	183	624
	498	POPP7149C	218	744
	598	POPP7159C	252	860
1210	398	POPP1239C	292	996
	498	POPP1249C	345	1177
	598	POPP1259C	398	1358
1497	398	POPP1439C	359	1225
	498	POPP1449C	423	1443
	598	POPP1459C	487	1662
1866	398	POPP1839C	448	1529
	498	POPP1849C	528	1802
	598	POPP1859C	608	2074

25 RAL colours are shown on page 197

*Saving based on the value of individual items when bought separately. Order any of our selected valves & matching pipe covers at the same time as your radiator; PROMOV3W (white), PROMOV3C (chrome).

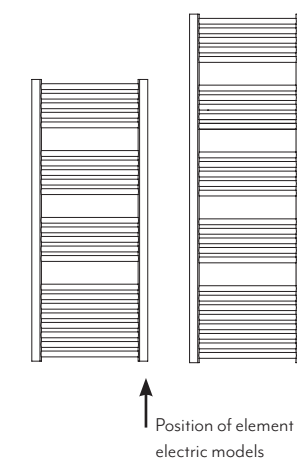
Made to order options - White electric

Height (mm)	Width (mm)	Model	Watts Δt 50°C
718	398	POPP7139EW	300
	498	POPP7149EW	400
	598	POPP7159EW	400
1210	398	POPP1239EW	400
	498	POPP1249EW	600
	598	POPP1259EW	600
1497	398	POPP1439EW	600
	498	POPP1449EW	800
	598	POPP1459EW	800
1866	398	POPP1839EW	800
	498	POPP1849EW	1000
	598	POPP1859EW	1000

Made to order options - Chrome electric

Height (mm)	Width (mm)	Model	Watts Δt 50°C
718	398	POPP7139EC	200
	498	POPP7149EC	300
	598	POPP7159EC	300
1210	398	POPP1239EC	300
	498	POPP1249EC	400
	598	POPP1259EC	400
1497	398	POPP1439EC	400
	498	POPP1449EC	400
	598	POPP1459EC	600
1866	398	POPP1839EC	400
	498	POPP1849EC	600
	598	POPP1859EC	800

398mm wide = 70mm-80mm
498mm wide = 68mm-78mm
598mm wide = 68mm-78mm



The Poppy Electric range is available in white & chrome and supplied with a fully controllable electric element. Offering 8 function modes, they can be set to operate when you wish, on a daily basis or you can select one of the three pre-set programmes. The Open Window function detects an open external door or window and will turn the radiator off if it which is allowing heat to escape so saving energy and money.

- Boost mode (2h at max power)
- Timer mode (configure different temperatures value for each hour and day of the week),
- Comfort mode (desired user temperature),
- Night mode, Pilot-wire mode, Antifreeze mode, Holiday mode
- Adaptive Start Control, open windows, ON/OFF button and a security lock for children.

Technical Specifications

Materials	Steel.
Connections	1/2" flow and return.
Test pressure	10,5 Bar
Maximum operating pressure	8 Bar
Maximum working temperature	95°C
Packaging	Cardboard protection and shrink wrapped.

PLEASE NOTE: Systems using micro bore pipework must have adequate pressure and flow rates for the number and style of radiators on the system.

Terms & Conditions

All products must be inspected once removed from the packaging and The Radiator Company notified within 28 days of delivery of any scratches, blemishes or other damage. The Radiator Company will then replace the radiator.

Imperfect radiators should therefore not be fitted and The Radiator Company will not accept responsibility for replacement of scratched or damaged radiators once they have been fitted. This includes any consequential loss or cost of fitting.

If The Radiator Company are not notified within 28 days of the date on the signed delivery note then it will be deemed that The Radiator Company have fully complied with its obligations and claims will not be considered.

Failure to comply with any of the above may invalidate any claims.

We recommend that after you check the product on delivery that it is stored in its packaging to prevent damage prior to installation. The Radiator Company cannot accept responsibility for items damaged after delivery.

Guarantees & Liabilities

The Poppy is guaranteed for 10 years. The guarantees in all cases are subject to the products being installed in accordance with British and or European standards as well as these fitting instructions. The guarantees in all cases are restricted to the free of charge replacement or repair of the failed product only. Our liability will under no circumstances extend beyond the repair or replacement of the product supplied by us. Claims for either labour in replacement or damage to property are not admissible. Any goods that are returned, in the event of a problem, will belong to The Radiator Company.

Fittings Instructions



Cod. 934M1117

Please read these instructions and terms and conditions carefully prior to installation. Failure to do so may invalidate the warranty.

The Radiator Company
Units 13 - 14 Charlwoods Road
East Grinstead
West Sussex
RH19 2HU

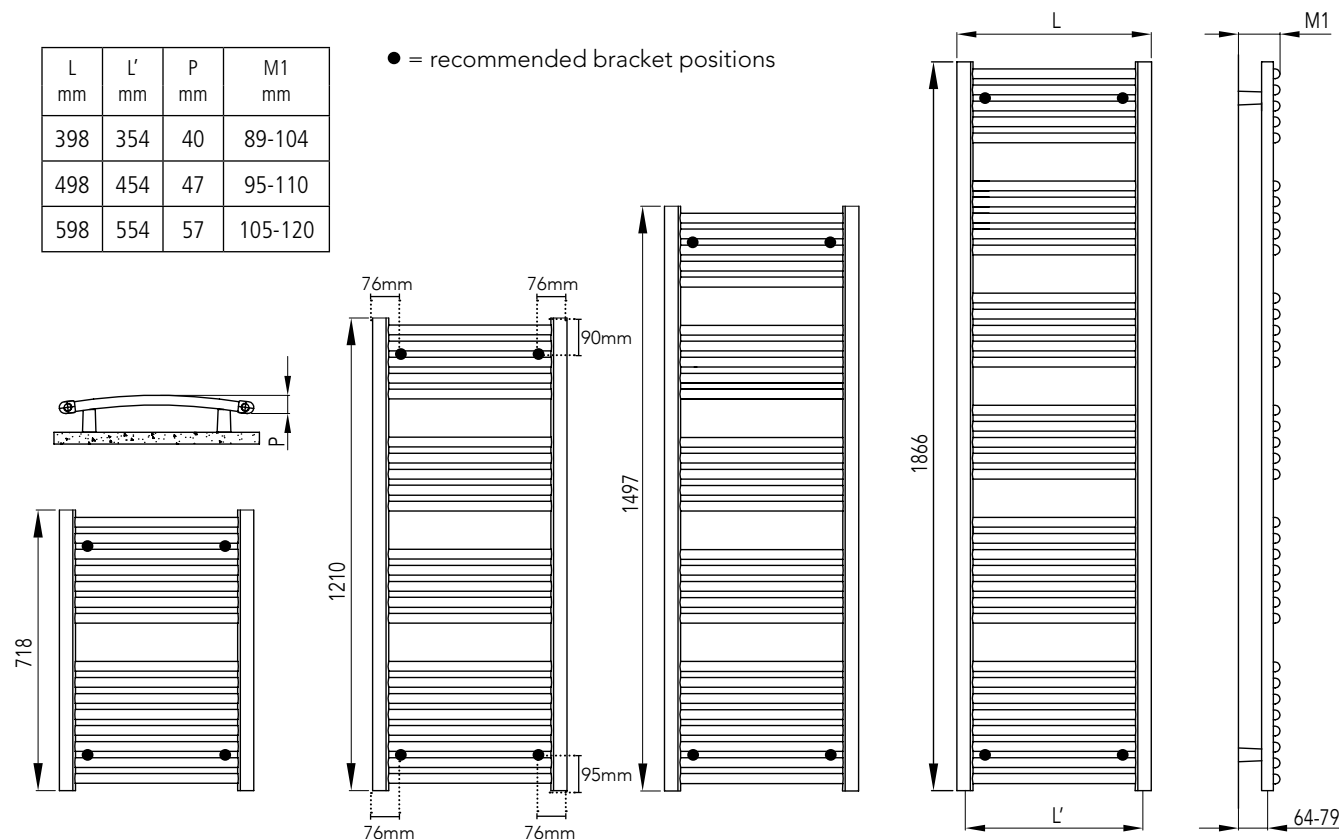


Cod. 934M1117

Poppy - Fig 1

L mm	L' mm	P mm	M1 mm
398	354	40	89-104
498	454	47	95-110
598	554	57	105-120

● = recommended bracket positions



Pipe Centres

Pipe centres left to right	=	width minus 44 mm
Pipe centres from wall	=	64mm - 79mm
Depth from wall	=	See table column "M1"

Contents

You should have:

- 1 Towel rail
- 4 Wall brackets (in parts)
- 1 Airvent

You will need:

- Tape measure
- Electric drill and bits
- Spirit level
- Screwdrivers
- Allen Key

Commission

Please Note: In accordance with Part L1 2006 of the Building Regulations and BS7593:1992 code of practice for the treatment of hot water and central heating systems, we strongly recommend flushing the heating system post installation of new radiators and then adding the correct quantity and type of inhibitor for use with your radiator and system to prevent corrosion. Damage caused to systems not protected by a suitable inhibitor will not be covered by manufacturer's guarantee.

1 Unpack & Inspect

The Radiator Company prides itself on selecting products from manufacturers who exercise tight quality control measures. We only select models with excellent standards of welding and brazing, as well as high quality finishes. All of our products are well packaged and should reach you in perfect condition. Just in case however, we offer a minimum 5-year no quibble guarantee for all radiators and towel rails.

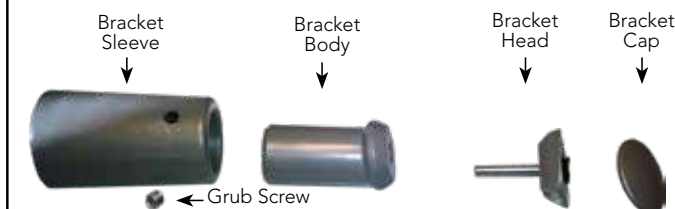


Please carefully unpack and inspect this radiator and all fittings. The Radiator Company must be notified of any shortages or damage within 28 days of delivery. For further information please see terms and conditions on back page.

2 Mark Bracket Positions

Fig 2

Bracket Assembly



Before installing the towel rail please affix the provided air vent.

As per Fig.1. Bracket positions

Width = width of towel rail less 152mm (76mm either side)

Height = Top brackets should be 90mm down from the top of the towel rail. Bottom brackets should be 95mm up from the base of the towel rail.

Mark brackets as per Fig.1. using a spirit level.

3 Fix Brackets and Hang

Fit Bracket sleeve Fig.2. to wall using suitable fixings.

Ensure that the grub screw on the sleeve is facing downwards.

Insert bracket body into the sleeves on the wall.

Offer towel rail up to the brackets and insert bracket head on the top two brackets and then onto the lower two brackets.

Ensure the towel rail is vertical and tighten grub screws on bracket sleeves.

Insert bracket caps.