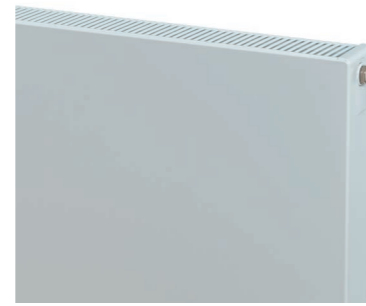


FARADAY® Type 22 (K2)



- Smooth Plain Front with Double Flat Panels and Double Convectors
- Available in 4 heights and 12 widths
- Standard White RAL 9016 delivered in 48-72 hours
- 25 RAL colours, 8 special finishes, up to 15 working days (page 11)



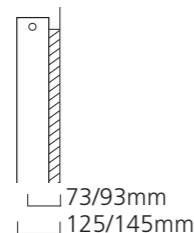
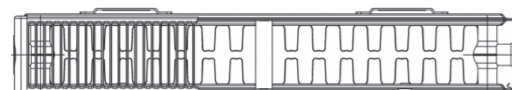
Sizes and Prices

Dimensions (mm)			Output Δt 50°C		Product Code
Height	Width	Depth	Watts	Btu's	
300	800	102	758	2586	FARA308022
	1000	102	948	3235	FARA301022
	1200	102	1138	3883	FARA301222
	1400	102	1327	4528	FARA301422
	1600	102	1517	5176	FARA301622
	1800	102	1706	5821	FARA301822
400	400	102	475	1621	FARA404022
	600	102	712	2429	FARA406022
	800	102	950	3241	FARA408022
	900	102	1068	3644	FARA409022
	1000	102	1187	4050	FARA401022
	1200	102	1424	4859	FARA401222
	1400	102	1662	5671	FARA401422
	1600	102	1899	6479	FARA401622
	1800	102	2137	7291	FARA401822
	2000	102	2374	8100	FARA402022
500	400	102	566	1931	FARA504022
	600	102	848	2893	FARA506022
	800	102	1131	3859	FARA508022
	1000	102	1414	4825	FARA501022
	1200	102	1697	5790	FARA501222
	1400	102	1980	6756	FARA501422
	1600	102	2262	7718	FARA501622
	1800	102	2545	8684	FARA501822
2000	102	2828	9649	FARA502022	
600	400	102	652	2225	FARA604022
	600	102	979	3340	FARA606022
	700	102	1142	3897	FARA607022
	800	102	1305	4453	FARA608022
	900	102	1468	5009	FARA609022
	1000	102	1631	5565	FARA601022
	1100	102	1794	6121	FARA601122
	1200	102	1957	6677	FARA601222
	1400	102	2283	7790	FARA601422
	1600	102	2610	8905	FARA601622
1800	102	2936	10018	FARA601822	
2000	102	3262	11130	FARA602022	

Pipe Centres and Technical Drawings

Type 22 (K2) Profile

Double steel panels (one front, one back) with double convectors.



Pipe centres left to right = Width plus valves
 Pipe centres from wall = 73 / 93mm
 Depth from wall = 125 / 145mm

© FARADAY is a registered trademark of IRSAP UK Limited



+Valves Prices include Angled Chrome or White KINGSTON TRV's.



Please specify at time of order

♦ FARADAY® Type 22 (K2) Horizontal 500mm x 1000mm in RAL 7016 with Nickel KINGSTON TRV's & matching Pipe Covers & Shrouds.

FLAT PANEL Horizontal Fitting Instructions



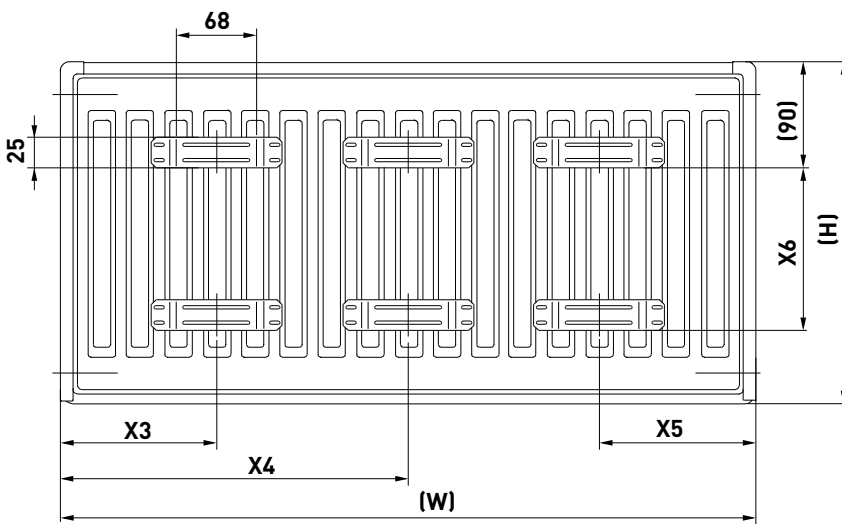
Steel Flat Panel Radiator

Type 11(K1) , Type 21(P+) Type 22 (K2)

Please read these instructions and terms and conditions carefully prior to installation.
Failure to do so may invalidate the warranty.

Drawings

Fig 1 - Fixing Positions for Brackets



Bracket drawing

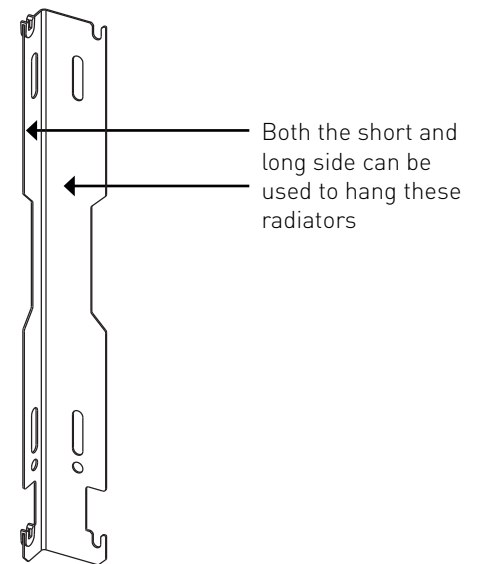
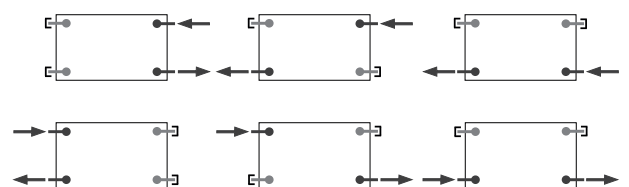


Table of Sizes

Width W (mm)		400	500-1600	1800	2000
X3 / X5	Type 11	117	150	150	150
	Type 21,22	133	133	133	133
X4	Type 11	-	-	883	983
	Type 21,22	-	-	900	1000

Height H (mm)	300	400	500	600	900
X6	145	245	345	445	745



Pipe Centres

	Type 11 (K1)	Type 21 (P+)	Type 22 (K2)
Pipe centres left to right	= width plus valves	width plus valves	width plus valves
Pipe centres from wall	= 48mm/68mm	56mm/76mm	73mm/93mm
Depth from wall	= 82mm/102mm <i>shorter/longer side</i>	91mm/111mm <i>shorter/longer side</i>	125mm/145mm <i>shorter/longer side</i>

1. Unpack & Inspect

This product should have reached you in perfect condition. Please carefully unpack and inspect this radiator and all fittings. Your point of purchase must be notified of any shortages or damage within 28 days of delivery. For further information please see terms and conditions on reverse.

2. Contents

You should have:

- 2 x L – Brackets (3 for 1800 to 2000 wide)
- 4 x plastic inserts (6 for 1800 to 2000 wide)
- 4 x 6x50 Screw (6 for 1800 to 2000 wide)
- 4 x Washer (6 for 1800 to 2000 wide)
- 4 x wall plug (6 for 1800 to 2000 wide)

You will need:

- Tape measure
- Electric drill and bits
- Spirit level
- Airvent key
- Appropriate wall fixings
- Spanners for airvents / valves

Cleaning: Steel products can be cleaned using a soft damp cloth with a non-abrasive cleaning product.

3. Installing radiator

1. Position the radiator against the wall in the desired position. Lightly mark either side of the radiator.
2. Mark up position of brackets referring to **Fig 1** for precise measurements. Using a spirit level mark on the vertical lines on bracket positions.
3. Ascertain desired height of radiator and mark. Measure down 112mm from the desired height and mark on vertical line. This will give the position of the top fixing point of the bracket. Offer up bracket to this mark and on the vertical line mark position of lower fixing point. Repeat for other bracket(s) ensuring brackets are straight horizontally.
4. Fix brackets with suitable fixings, fit plastic inserts, hang radiator and fix pipework.

4. Commission Radiator

Please Note: In accordance with Part L1 2006 of the Building Regulations and BS7593:1992 code of practice for the treatment of hot water and central heating systems, we strongly recommend flushing the heating system post installation of new radiators and then adding the correct quantity and type of inhibitor for use with your radiator and system to prevent corrosion. Damage caused to systems not protected by a suitable inhibitor will not be covered by manufacturer's guarantee.

Technical Specifications

Materials	Steel
Connections	½" flow and return.
Test pressure	13 Bar
Testing authority	EN442
Maximum operating pressure	10 Bar
Maximum working temperature	110°C
Packaging	Corrugated cardboard, plastic reinforcing corner covers, polyethylene shrinking foil.

PLEASE NOTE: Systems using micro bore pipework must have adequate pressure and flow rates for the number and style of radiators on the system.

Guarantees & Liabilities

This product is guaranteed for 10 years. As we are not the manufacturers of this product we will take all reasonable endeavours to make over to you the benefit of any warranty or guarantee given by the manufacturer.

The guarantees in all cases are subject to the products being installed in accordance with British and or European standards as well as these fitting instructions. The guarantees in all cases are restricted to the free of charge replacement or repair of the failed product only. Our liability will under no circumstances extend beyond the repair or replacement of the product supplied by us. Claims for either labour in replacement or damage to property are not admissible. Any goods that are returned, in the event of a problem, will belong to us.

Terms & Conditions

All products must be inspected once removed from the packaging and your point of purchase notified within 28 days of delivery of any scratches, blemishes or other damage. Your point of purchase will then agree appropriate action.

Imperfect radiators should therefore not be fitted and we will not accept responsibility for replacement of scratched or damaged radiators once they have been fitted. This includes any consequential loss or cost of fitting.

If we are not notified within 28 days of the date on the signed delivery note then it will be deemed that we have fully complied with our obligations and claims will not be considered. Failure to comply with any of the above may invalidate any claims. We recommend that after you check the product on delivery that it is stored in its packaging to prevent damage prior to installation, we cannot accept responsibility for items damaged after delivery.