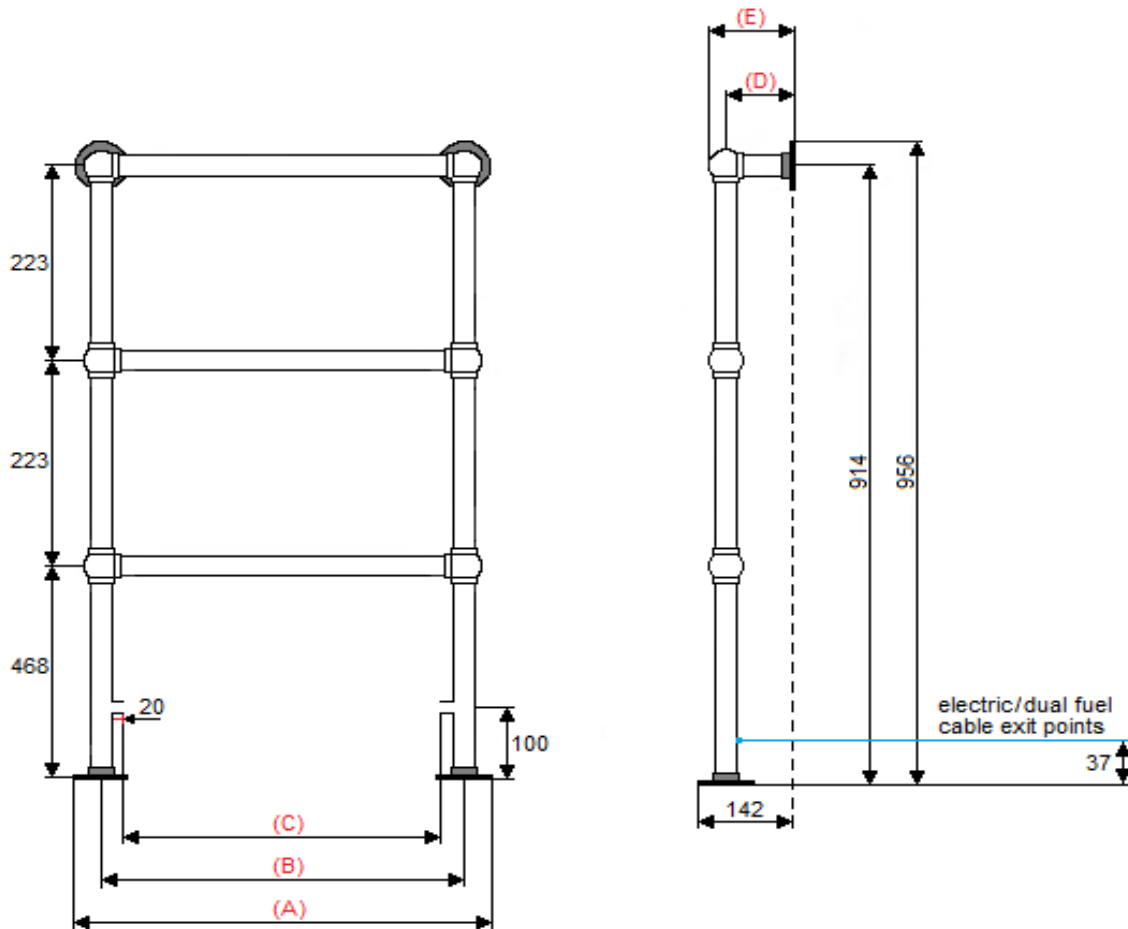


APOLLO ravenna PIA technical specification



RAVENNA PIA DIMENSIONS (mm)				
Model code			PIA4	PIA6
Width of radiator			484	694
Model height		(A)		956
Pipe centres	Width	(B)	400	610
	Depth	(D)	100	100
Depth of rail		(E)		125
No. of cross bars				3
Tapping centres	Inward	(C)	328	538
Bracket positions			wall plates/floor plates	
Tappings			1/2"	

TEMPERATURE			
FACTORS FOR DIFFERENCES BETWEEN MEAN WATER TEMPERATURE AND ROOM TEMPERATURE IN °C AND °F OTHER THAN 50°C (90°F)			
5°C	0.050	10°F	0.057
10°C	0.123	20°F	0.142
15°C	0.209	30°F	0.240
20°C	0.304	40°F	0.348
25°C	0.406	50°F	0.466
30°C	0.515	60°F	0.590
35°C	0.629	70°F	0.721
40°C	0.748	80°F	0.858
45°C	0.872	90°F	1.000
50°C	1.000	100°F	1.147
55°C	1.132	110°F	1.298
60°C	1.267	120°F	1.454
65°C	1.406	130°F	1.613
70°C	1.549	140°F	1.776
75°C	1.694		

RAVENNA PIA WEIGHTS AND VOLUMES (per radiator)			
Model width (mm)		484	694
Dry weight (A) Kg		5.13	5.70
Water content (B) Litres		2.26	2.70
Working weight (A+B) Kg		7.39	8.40
Outputs: Watts ΔT=50k		190	231

The thermal outputs expressed at ΔT=50k comply with European regulation EN 442-2

ADDITIONAL INFORMATION	
Material	Brass (DZR)
Alloy thickness	1 - 1.6mm
Tube diameter	31.8mm
Maximum working pressure	3 bar/300 kPa
Maximum working temperature	85°C
Maximum testing pressure	6 bar/600 kPa

TO APPLY THE FACTORS SHOWN IN THE TABLE TO OUR QUOTED OUTPUTS MULTIPLY THE QUOTED OUTPUT BY THE CHOSEN OPERATING FACTOR TO GIVE THE OUTPUT

DUAL FUEL/ELECTRIC INFORMATION (where applicable)	
Position of cable exit point	Back of leg
Distance from floor to cable exit point	37mm
Element	150W

Please note: These towel rails are handmade and therefore subject to a tolerance of +/- 6mm on all measurements

This drawing: Is the property of Apollo Radiators Ltd and may not be reproduced or transmitted to third parties without authorisation