



# FINSBURY VERTICAL HORIZONTAL

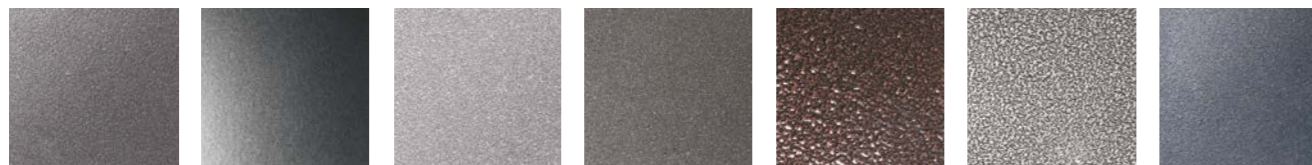
## White + Anthracite + Colours

- Made in Italy
- Stocked in White & Anthracite
- Available in 6 special colours
- Vertical 50mm x 25mm oval tubes
- Single & Double versions

Sizes	<b>10</b>	Material	<b>Steel</b>	Operating up to (bar)	<b>5</b>	Delivery (White & Anthracite)	<b>3-5 days</b>
		Stocked Finish	<b>WH &amp; AN</b>	Guarantee (years)	<b>5</b>	Delivery (Colour)	<b>5 weeks</b>

Tubes	Code	PRICE (ex VAT)	PRICE (inc VAT)	Height mm	Width mm	Wall To Face mm	Tapping From Wall mm	Centres mm	Heat Output $\Delta t$ 50°C		Dry Weight kg	Water Content ltrs
									Watts	BTUs		
<b>WHITE (RAL 9016) SINGLE</b>												
7	FIVSWH-60-420			600	420	85-88	45-48	420	316	1078	5.79	4.26
10	FIVSWH-60-600			600	600	85-88	45-48	600	451	1539	7.02	6.08
13	FIVSWH-60-780			600	780	85-88	45-48	780	586	1999	10.76	7.91
16	FIVSWH-60-960			600	960	85-88	45-48	960	722	2463	13.24	9.74
19	FIVSWH-60-114			600	1140	85-88	45-48	1140	857	2924	15.72	11.56
<b>ANTHRACITE SINGLE</b>												
7	FIVHSAN-60-420			600	420	85-88	45-48	420	316	1078	5.79	4.26
10	FIVHSAN-60-600			600	600	85-88	45-48	600	451	1539	7.02	6.08
13	FIVHSAN-60-780			600	780	85-88	45-48	780	586	1999	10.76	7.91
16	FIVHSAN-60-960			600	960	85-88	45-48	960	722	2463	13.24	9.74
19	FIVHSAN-60-114			600	1140	85-88	45-48	1140	857	2924	15.72	11.56
<b>COLOURS SINGLE</b>												
7	FIVHSCO-60-420			600	420	85-88	45-48	420	316	1078	5.79	4.26
10	FIVHSCO-60-600			600	600	85-88	45-48	600	451	1539	7.02	6.08
13	FIVHSCO-60-780			600	780	85-88	45-48	780	586	1999	10.76	7.91
16	FIVHSCO-60-960			600	960	85-88	45-48	960	722	2463	13.24	9.74
19	FIVHSCO-60-114			600	1140	85-88	45-48	1140	857	2924	15.72	11.56
<b>WHITE (RAL 9016) DOUBLE</b>												
14	FIVHDWH-60-420			600	420	127	87	420	482	1645	10.70	8.36
20	FIVHDWH-60-600			600	600	127	87	600	688	2347	14.04	11.95
26	FIVHDWH-60-780			600	780	127	87	780	894	3050	19.88	15.53
32	FIVHDWH-60-960			600	960	127	87	960	1101	3757	24.46	19.11
38	FIVHDWH-60-114			600	1140	127	87	1140	1307	4459	29.05	22.70
<b>ANTHRACITE DOUBLE</b>												
14	FIVHDAN-60-420			600	420	127	87	420	482	1645	10.70	8.36
20	FIVHDAN-60-600			600	600	127	87	600	688	2347	14.04	11.95
26	FIVHDAN-60-780			600	780	127	87	780	894	3050	19.88	15.53
32	FIVHDAN-60-960			600	960	127	87	960	1101	3757	24.46	19.11
38	FIVHDAN-60-114			600	1140	127	87	1140	1307	4459	29.05	22.70
<b>COLOURS DOUBLE</b>												
14	FIVHDCCO-60-420			600	420	127	87	420	482	1645	10.70	8.36
20	FIVHDCCO-60-600			600	600	127	87	600	688	2347	14.04	11.95
26	FIVHDCCO-60-780			600	780	127	87	780	894	3050	19.88	15.53
32	FIVHDCCO-60-960			600	960	127	87	960	1101	3757	24.46	19.11
38	FIVHDCCO-60-114			600	1140	127	87	1140	1307	4459	29.05	22.70

### Optional colours



- F03 Anthracite (Stocked)
- RAL 7016 Anthracite Grey (Matt)
- F23 Sparkling Grey
- F15 Sparkling Black
- M02 Black Brown
- M04 Black Silver 2
- F37 Denim Blue

If you would like a colour swatch please contact head office



Double model shown with White Finchley TRV valves



White finish



Anthracite finish

