

# Water Lily



Single 2020mm x 312mm in Matt Black with Nickel Corner Ideal TRV's

# Water Lily shown on page 56

High quality Italian design & manufacture.  
Steel; 70mm flat tubes with 30mm collectors  
Underneath (B2) connections as standard  
UKCA approved & certified to BS EN442

White RAL 9016 as standard, 188 RAL colours plus 30 Special Finishes  
Please call **01342 302250** for a RAL or Special Finish chart

**Stock White RAL 9016: 48-72 Hours**  
Made to Order sizes & colours: Up to 5 weeks



**SAVE MONEY!** WHEN YOU BUY OUR  
**IDEAL TRV KIT** WITH ANY DESIGNER  
ORDER\*QUOTE **PROMOVI** AT TIME OF ORDER

Available in White or Chrome

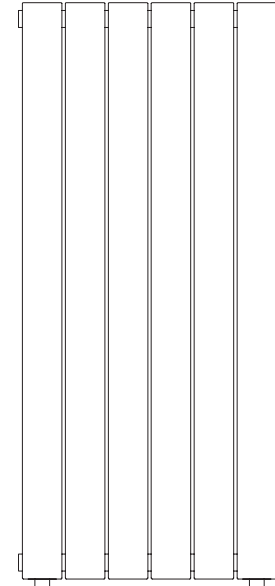
Water Lily	Pipe centres left to right	Pipe centres from wall	Depth from wall
Water Lily Single	width - 84mm	55mm - 65mm	79mm - 89mm
Water Lily Double	width - 84mm	67mm - 77mm	91mm - 101mm

Please note: underneath connections only

## Stock options White RAL 9016 - Single Vertical

Height (mm)	Width (mm)	Model	Watts $\Delta t 50^{\circ}c$	Btu's $\Delta t 50^{\circ}c$
1820	160	WATESI81602	294	1003
	236	WATESI82303	441	1505
	312	WATESI83104	588	2006
	388	WATESI83805	735	2508
	464	WATESI84606	881	3006
2020	160	WATES201602	328	1119
	236	WATES202303	492	1679
	312	WATES203104	656	2238
	388	WATES203805	820	2798
	464	WATES204606	984	3357

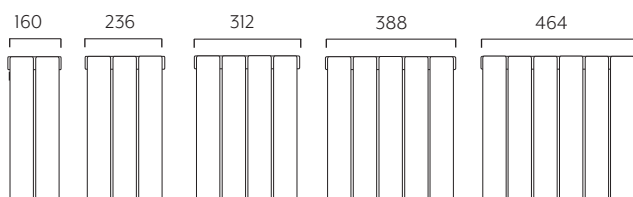
79-89  
55-65



## Stock options White RAL 9016 - Double Vertical

Height (mm)	Width (mm)	Model	Watts $\Delta t 50^{\circ}c$	Btu's $\Delta t 50^{\circ}c$
1820	160	WATEDI81602	420	1433
	236	WATEDI82303	630	2150
	312	WATEDI83104	840	2866
	388	WATEDI83805	1050	3583
	464	WATEDI84606	1259	4296
2020	160	WATED201602	466	1590
	236	WATED202303	699	2385
	312	WATED203104	932	3180
	388	WATED203805	1166	3978
	464	WATED204606	1399	4773

91-101  
67-77



\*Saving based on the value of individual items when bought separately. Order any of our selected valves & matching pipe covers at the same time as your radiator; PROMOVIW (white), PROMOVIC (chrome).

## Technical Specifications

Materials	Steel
Connections	½" flow and return
Test pressure	5,2 Bar
Testing authority	Politecnico di Milano
Maximum operating pressure	4 Bar
Maximum working temperature	As to EN442 Δt 50°C
Packaging	Wrapped in polythene and boxed
Cleaning	Soft damp cloth with a non-abrasive cleaning product

**PLEASE NOTE:** Systems using micro bore pipework must have adequate pressure and flow rates for the number and style of radiators on the system.

## Terms & Conditions

All products must be inspected once removed from the packaging and The Radiator Company notified within 28 days of delivery of any scratches, blemishes or other damage. The Radiator Company will then replace the radiator.

Imperfect radiators should therefore not be fitted and The Radiator Company will not accept responsibility for replacement of scratched or damaged radiators once they have been fitted. This includes any consequential loss or cost of fitting.

If The Radiator Company are not notified within 28 days of the date on the signed delivery note then it will be deemed that The Radiator Company have fully complied with its obligations and claims will not be considered.

Failure to comply with any of the above may invalidate any claims.

We recommend that after you check the product on delivery that it is stored in its packaging to prevent damage prior to installation. The Radiator Company cannot accept responsibility for items damaged after delivery.

## Guarantees & Liabilities

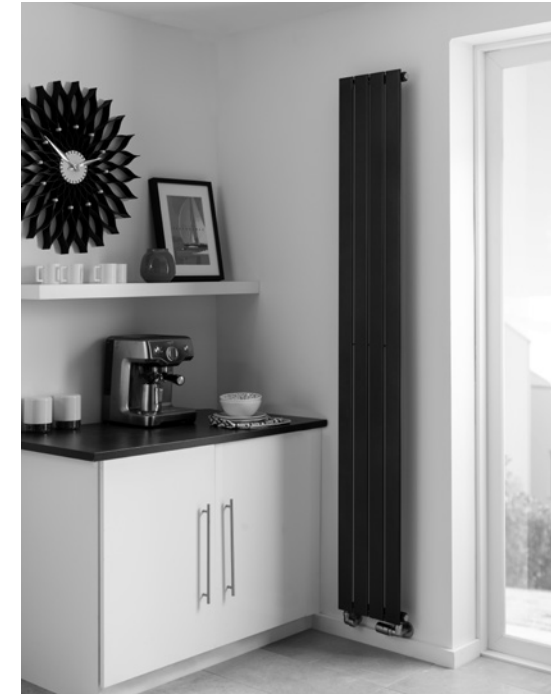
The Water Lily is guaranteed for 10 years. The guarantees in all cases are subject to the products being installed in accordance with British and or European standards as well as these fitting instructions. The guarantees in all cases are restricted to the free of charge replacement or repair of the failed product only. Our liability will under no circumstances extend beyond the repair or replacement of the product supplied by us. Claims for either labour in replacement or damage to property are not admissible. Any goods that are returned, in the event of a problem, will belong to The Radiator Company.

A brand of **IRSAP** Italy's leading manufacturer of design led radiators.



# Water Lily

## Fittings Instructions



The Water Lily lends itself perfectly to rooms where space is at a premium and best suited to a slimline model.

Please read these instructions and terms and conditions carefully prior to installation. Failure to do so may invalidate the warranty.

The Radiator Company  
Units 13 - 14 Charlwoods Road  
East Grinstead  
West Sussex  
RH19 2HU

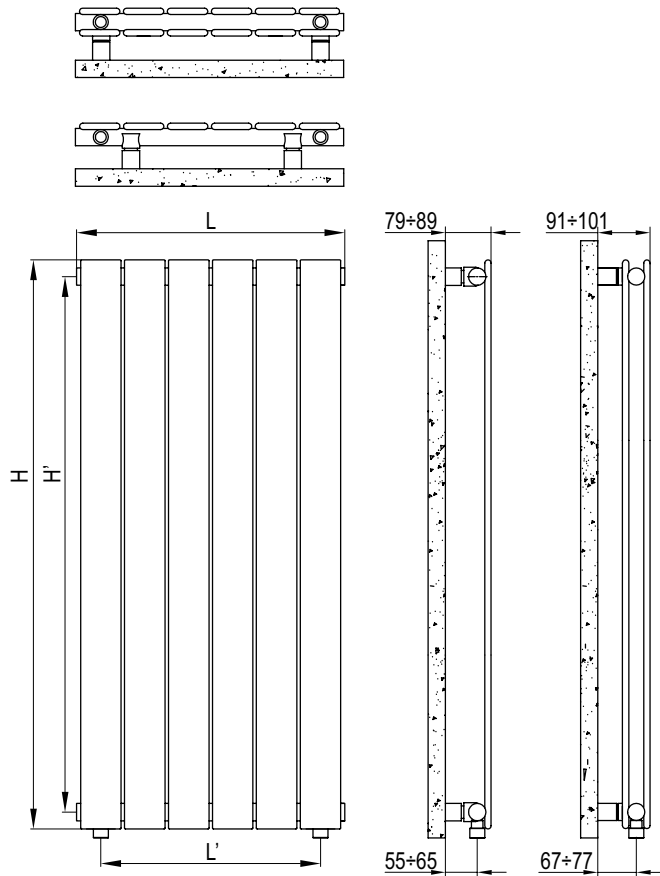


WLIL1.4

If you have any questions please contact us on 01342 302250  
[www.theradiatorcompany.co.uk](http://www.theradiatorcompany.co.uk)

If you have any questions please contact us on 01342 302250  
[www.theradiatorcompany.co.uk](http://www.theradiatorcompany.co.uk)

## Diagrams of Water Lily



Model	Elem. N°	H mm	H' mm	L mm	L' mm
Water Lily Single & double	2	2020	1962	160	76
	3	2020	1962	236	152
	4	2020	1962	312	228
	5	2020	1962	388	304
	6	2020	1962	464	380

## Pipe Centres

Pipe centres left to right	=	width - 84 mm
Pipe centres from wall	=	Single; 55 mm - 65 mm Double; 67 mm - 77 mm
Depth from wall	=	Single; 79 mm - 89 mm Double; 91 mm - 101 mm

Please note: underneath connections only

## 1 Unpack & Inspect

The Radiator Company prides itself on selecting products from manufacturers who exercise tight quality control measures. We only select models with excellent standards of welding and brazing, as well as high quality finishes. All of our products are well packaged and should reach you in perfect condition. Just in case however, we offer a minimum 10 year no quibble guarantee for all radiators and towel rails. Please carefully unpack and inspect this radiator and all fittings. The Radiator Company must be notified of any shortages or damage within 28 days of delivery. For further information please see terms and conditions on back page.



## 2 Contents

You should have:

- 1 Radiator
- 4 Wall brackets (3 wall brac. for single 2 elements)
- 4 Wall Plugs (3 wall plugs for single 2 elements)
- 4 Screws (3 wall screws single 2 elements)
- 4 Wall sleeves (3 wall sleeves for single 2 elements)
- 1 Airvent
- 1 Blanking Plug

You will need:

- Tape measure
- Electric drill and bits
- Spirit level

## 3 Mark and Fix Brackets

Water Lily single radiators use clamp style brackets that can be positioned on the collector to suit the installation, although we recommend that they are fitted in the locations suggested in the technical drawings in section 5. The brackets on double radiators use welded lugs in fixed positions on the cross tubes.

Attach brackets and bracket sleeves to the radiator as shown in Diagrams 1(single) and 2 (double), place radiator against the wall and mark bracket positions.

Detach the bracket sleeve from the bracket and using a suitable drill bit and fixings secure in position, checking they are level and square.

### PLEASE NOTE :

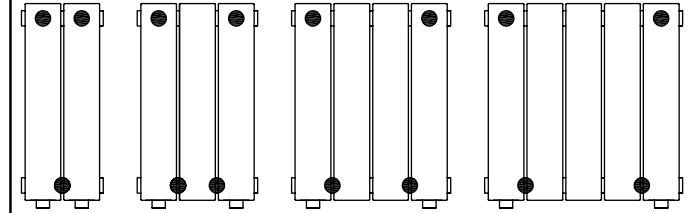
It is essential that all brackets are level to ensure a vertical alignment for connecting the pipework.

## 4 Hang Radiator

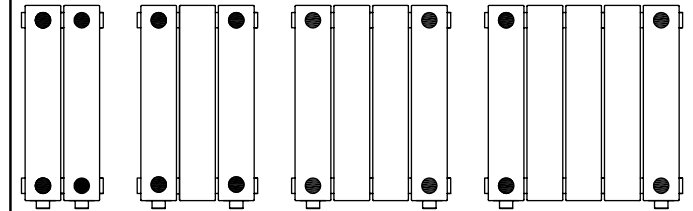
With the bracket sleeves firmly fixed and level, the radiator can be hung in position by inserting the brackets into the sleeves and securing with the grub screws provided.

## 5 Fix Brackets and Hang

- = typical bracket fixing positions for single range



- = bracket fixing positions for double range



single range

double range

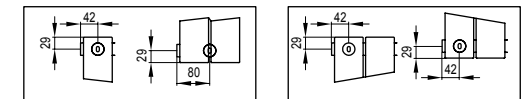


Diagram 1 (single version)

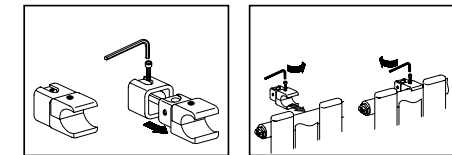
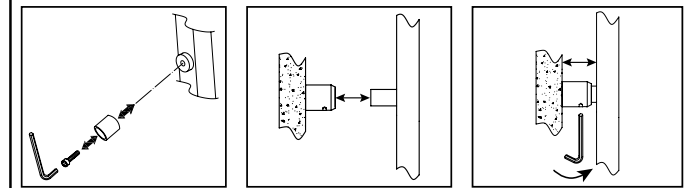


Diagram 2 (double version)



## Commision

**Please Note:** In accordance with Part L1 2006 of the Building Regulations and BS7593:1992 code of practice for the treatment of hot water and central heating systems, we strongly recommend flushing the heating system post installation of new radiators and then adding the correct quantity and type of inhibitor for use with your radiator and system to prevent corrosion. Damage caused to systems not protected by a suitable inhibitor will not be covered by manufacturer's guarantee.