

Oscar



1646mm x 420mm colour co-ordinated in Dulux Natural Slate shown with optional matching end panels and matching Pistol TRV's



1846mm x 340mm in White RAL 9010 shown with White Ideal TRV's

High quality Italian design & manufacture.
Sectional Aluminium. UKCA approved & certified to BS EN442

White RAL 9010 as standard, 25 RAL colours plus 30 Special Finishes
Please call **01342 302250** for a RAL or Special Finish chart
Colour Co-ordination Service available, see pages 6-7 for full details.

Stock White RAL 9010: 48-72 Hours
Colours & Finishes: Up to 3 weeks (please allow up to 5 weeks for orders of more than 10 radiators in colours or special finishes)

Choose from our assembled stock options or build your own size by individual section, visit **www.theradiatorcompany.co.uk** to use our radiator builder.

Assembled stock options RAL 9010

1046mm High

Height (mm)	Width (mm)	Sections	Model	Watts Δt 50°c	Btu's Δt 50°c
1046	260	3	OSCASI0X3	570	1945
	340	4	OSCASI0X4	760	2593
	420	5	OSCASI0X5	950	3241
	500	6	OSCASI0X6	1140	3890
	580	7	OSCASI0X7	1330	4538
	660	8	OSCASI0X8	1520	5186
	740	9	OSCASI0X9	1710	5835
	820	10	OSCASI0X10	1900	6483

1246mm High

Height (mm)	Width (mm)	Sections	Model	Watts Δt 50°c	Btu's Δt 50°c
1246	260	3	OSCASI2X3	654	2231
	340	4	OSCASI2X4	872	2975
	420	5	OSCASI2X5	1090	3719
	500	6	OSCASI2X6	1308	4463
	580	7	OSCASI2X7	1526	5207
	660	8	OSCASI2X8	1744	5951
	740	9	OSCASI2X9	1962	6694
	820	10	OSCASI2X10	2180	7438

1446mm High

Height (mm)	Width (mm)	Sections	Model	Watts Δt 50°c	Btu's Δt 50°c
1446	260	3	OSCASI4X3	735	2508
	340	4	OSCASI4X4	980	3344
	420	5	OSCASI4X5	1225	4180
	500	6	OSCASI4X6	1470	5016
	580	7	OSCASI4X7	1715	5852
	660	8	OSCASI4X8	1960	6688
	740	9	OSCASI4X9	2205	7523
	820	10	OSCASI4X10	2450	8359

*Saving based on the value of individual items when bought separately. Order any of our selected valves & matching pipe covers at the same time as your radiator; PROMOVIIW (white), PROMOVIC (chrome).



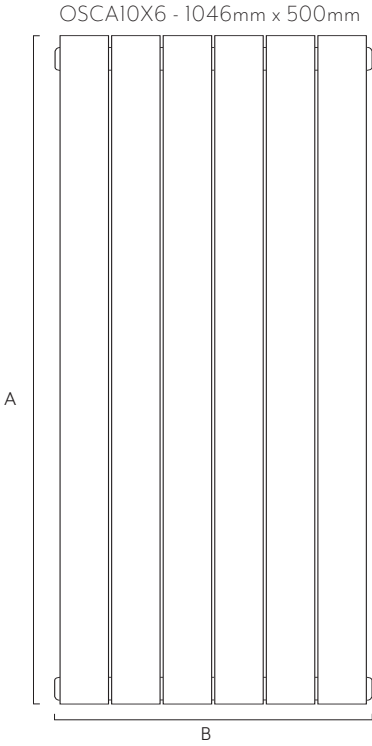
SAVE MONEY! WHEN YOU BUY OUR **IDEAL TRV KIT** WITH ANY DESIGNER ORDER*QUOTE **PROMOVI** AT TIME OF ORDER

Available in White or Chrome

Widths include measurement for bushes

Quoted prices include plugs, bushes, air vent and wall brackets but excludes end panels.

Optional end panels available please specify at time of order, see page 177 for prices.



Pipe centres left to right	Pipe centres from wall	Depth from wall
width + valves	67mm to 71mm	114mm to 118mm

Optional end panels available for Oscar range see page 177 for more information and pricing

Please specify at time of order



Assembled stock options RAL 9010

1646mm High

Height (mm)	Width (mm)	Sections	Model	Watts Δt 50°c	Btu's Δt 50°c
1646	260	3	OSCASI6X3	813	2774
	340	4	OSCASI6X4	1084	3699
	420	5	OSCASI6X5	1355	4623
	500	6	OSCASI6X6	1626	5548
	580	7	OSCASI6X7	1897	6473
	660	8	OSCASI6X8	2168	7397
	740	9	OSCASI6X9	2439	8322
	820	10	OSCASI6X10	2710	9247

1846mm High

Height (mm)	Width (mm)	Sections	Model	Watts Δt 50°c	Btu's Δt 50°c
1846	260	3	OSCASI8X3	891	3040
	340	4	OSCASI8X4	1188	4053
	420	5	OSCASI8X5	1485	5067
	500	6	OSCASI8X6	1782	6080
	580	7	OSCASI8X7	2079	7094
	660	8	OSCASI8X8	2376	8107
	740	9	OSCASI8X9	2673	9120
	820	10	OSCASI8X10	2970	10134

2046mm High

Height (mm)	Width (mm)	Sections	Model	Watts Δt 50°c	Btu's Δt 50°c
2046	260	3	OSCAS20X3	963	3286
	340	4	OSCAS20X4	1284	4381
	420	5	OSCAS20X5	1605	5476
	500	6	OSCAS20X6	1926	6572
	580	7	OSCAS20X7	2247	7667
	660	8	OSCAS20X8	2568	8762
	740	9	OSCAS20X9	2889	9857
	820	10	OSCAS20X10	3210	10953

Stock options by section RAL 9010

Outputs & price given per section, see page 176 for help on sizing your radiator or visit **www.theradiatorcompany.co.uk** where you will find our radiator builder.

Height (mm)	Width (mm)	Model	Watts Δt 50°c	Btu's Δt 50°c
1046	80	OSCAI0	190	648
1246		OSCAI2	218	744
1446		OSCAI4	245	836
1646		OSCAI6	271	925
1846		OSCAI8	297	1013
2046		OSCA20	321	1095

Note: Supplied pre-assembled in up to 10 sections (800mm), wider radiators must be joined on site.

Pipe centres left to right	Pipe centres from wall	Depth from wall
no. of sections x 80mm + 20mm bushes + valves	67mm to 71mm	114mm to 118mm

Widths include measurement for bushes

Quoted prices include plugs, bushes, air vent and wall brackets but excludes end panels.

Optional end panels available please specify at time of order, see page 177 for prices.

Pipe centres left to right	Pipe centres from wall	Depth from wall
width + valves	67mm to 71mm	114mm to 118mm

Optional end panels available for Oscar range see page 177 for more information and pricing



Optional end panels available for Oscar range see page 177 for more information and pricing



Please specify at time of order

Technical Specifications

Material	Aluminium
Connections	1/2" flow and return
Test Pressure	9 Bar
Testing Authority	EN442
Maximum operating pressure	6 Bar
Maximum working temperature	100°C
Packaging	Wrapped in polythene and boxed
Cleaning	Soft damp cloth with nonabrasive cleaning product

PLEASE NOTE: To reduce the possibility of noise caused by rapid heating and cooling of aluminium radiators; adequate capacity for expansion must be provided within the overall heating system. Systems using micro bore pipework must have adequate pressure and flow rates for the number and style of radiators on the system.

Terms & Conditions

All products must be inspected once removed from the packaging and The Radiator Company notified within 28 days of delivery of any scratches, blemishes or other damage. The Radiator Company will then replace the radiator.

Imperfect radiators should therefore not be fitted and The Radiator Company will not accept responsibility for replacement of scratched or damaged radiators once they have been fitted. This includes any consequential loss or cost of fitting.

If The Radiator Company are not notified within 28 days of the date on the signed delivery note then it will be deemed that The Radiator Company have fully complied with its obligations and claims will not be considered.

Failure to comply with any of the above may invalidate any claims.

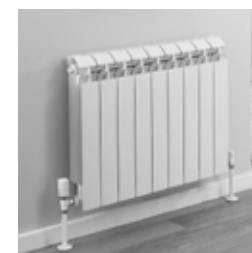
We recommend that after you check the product on delivery and that it is stored in its packaging to prevent damage prior to installation. The Radiator Company cannot accept responsibility for items damaged after delivery.

Guarantees & Liabilities

As we are not the manufacturers of this product we will take all reasonable endeavours to make over to you the benefit of any warranty or guarantee given by the manufacturer, which is usually five years on most of our range. (Copies of specific guarantees for any of our products are available on request).

The guarantees in all cases are subject to the products being installed in accordance with British and or European standards as well as these fitting instructions. The guarantees in all cases are restricted to the free of charge replacement or repair of the failed product only. Our liability will under no circumstances extend beyond the repair or replacement of the product supplied by us. Claims for either labour in replacement or damage to property are not admissible. Any goods that are returned, in the event of a problem, will belong to The Radiator Company.

Fittings Instructions



Aluminium radiators offer simple, contemporary styling matched with great outputs and economical efficiency.

Please read these instructions and terms and conditions carefully prior to installation. Failure to do so may invalidate the warranty.

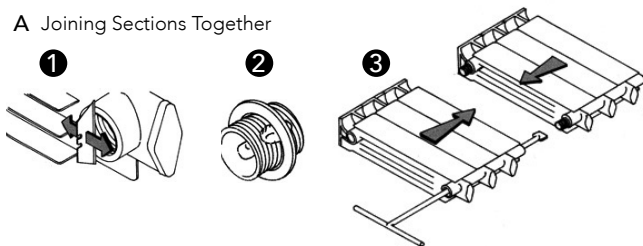
The Radiator Company
Units 13 - 14 Charlwoods Road
East Grinstead
West Sussex
RH19 2HU



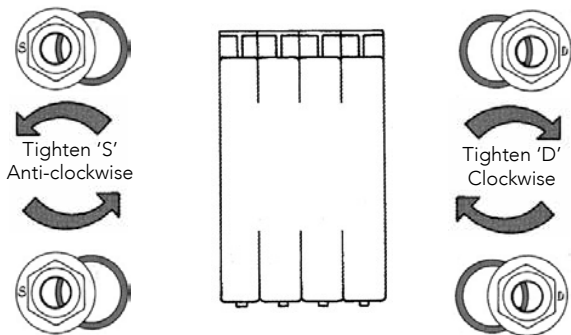
ALUM_IR_1.0

Diagrams of Aluminium Radiators

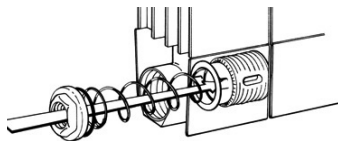
A Joining Sections Together



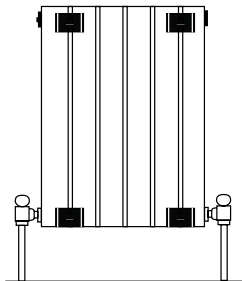
B Standard Configuration of Bushes



C Diverter Installation for Oscar



D Placement of Wall Brackets



Pipe Centres

Pipe centres left to right

no. sections x 80mm + 20mm bushes + valves

Pipe centres from wall

67mm to 71mm

Depth from wall

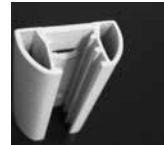
114mm to 118mm

Brackets

E



F



G



1 Unpack & Inspect

The Radiator Company prides itself on selecting products from manufacturers who exercise tight quality control measures. We only select models with excellent standards of welding and brazing, as well as high quality finishes. All of our products are well packaged and should reach you in perfect condition. Just in case however, we offer a 10 year no quibble guarantee for all aluminium radiators.



Please carefully unpack and inspect this radiator and all fittings. The Radiator Company must be notified of any shortages or damage within 28 days of delivery. For further information please see terms and conditions on back page.

2 Contents

	up to 20 sections	21 - 30 sections	31 plus sections
• Wall Brackets	4	6	8

1 Fittings pack including:

- 4 Bushes with gaskets
- 1 Airvent
- 1 Blanking Plug, if your radiator requires a plug
- 1 Air vent key

For Oscar

- All above plus 1 Spring diverter

3 Joining Sections

Very long radiators may require on-site assembly.

1. Remove excess paint from the four radiator faces to be joined together by scraping a flat knife blade across the surface.

2. Place both halves to be assembled on a flat even surface and align the joining surfaces. The radiator sections and joining nipples have one left and one right hand thread - the Nipples must be inserted correctly to avoid cross threading. **The end of the nipple with the right hand thread has a smooth edge; the end with the left hand thread has a serrated edge.** Carefully insert the barrel nipples into both waterways on one half, taking care not to damage the threads, these can be screwed in a couple of turns each. Apply a little jointing compound to the soft fibre gasket and position this gasket within the central groove on the nipple (excluding the Oscar which is a dry fit)

3. Carefully insert the joining key through the collector until it locates the barrel nipple and gradually close the halves by equal amounts until tight (please see diagram).

4 Fit Bushes

IMPORTANT NOTE:

Aluminium radiators have specific left and right hand threaded bushes and these can be easily damaged if forced or incorrectly fitted (this will inevitably cause leaks). **Bushes require a dry fit connection only; you must not use any Compound materials (e.g. Jet Blue) or Plumbers Hemp.** If you choose you may use up to 4 turns of PTFE tape to help seal the threads (the tape should be applied in the direction of the thread and no more than this amount should be used as this may cause leaks to occur)

If looking directly at the front of the radiator, the two bushes with an 'S' cast on them are positioned on the left and turned anti-clockwise. The two bushes cast with a 'D' are positioned on the right and turned clockwise.

Please see Diagram B.

5 Fit Diverter (Oscar only)

Oscar radiators over 1 metre tall are supplied with a spring diverter, which is installed in the lower waterway at either end.

This is installed by pushing the cap firmly in the waterway until it locates against the barrel nipple and is retained in place by the bush. The flow must enter this end first (please see diagram C).

6 Mark Brackets

You will have been supplied with a suitable amount of brackets for your radiator (see picture E and Contents).

The brackets are typically positioned one section in from either end with extra brackets spaced at equal distances between these two.

The two piece brackets can be adjusted both vertically, using the large dome head screw and front to back using the two positions in which the bracket hook can be placed (see picture F and G).

7 End Panels (if ordered with Vip or Oscar)

If you have end panels with your radiator, these will have a chrome cap that clips on top and a black clip that slides into the panel from the bottom which will click down onto the fins to secure.

8 Hang Radiator & Commission

With the brackets firmly fixed and level, the radiator is lowered directly onto the brackets. Connect valves and refill system, adding the correct inhibitor and check for leaks.

Please Note: In accordance with Part L1 2006 of the Building Regulations and BS7593:1992 code of practice for the treatment of hot water and central heating systems, we strongly recommend flushing the heating system post installation of new radiators and then adding the correct quantity and type of inhibitor for use with your radiator and system to prevent corrosion. Damage caused to systems not protected by a suitable inhibitor will not be covered by manufacturer's guarantee.