

Mix



440mm x 1060mm in Azurite with Nickel Corner Ideal TRV's



690mm x 1060mm in RAL 9010 with White Pistol TRV's

High quality Italian design & manufacture.
Sectional Aluminium. UKCA approved & certified to BS EN442

White RAL 9010 as standard, 25 RAL colours plus 30 Special Finishes
Please call **01342 302250** for a RAL or Special Finish chart
Colour Co-ordination Service available, see pages 6-7 for full details.

Stock White RAL 9010: 48-72 Hours
Colours & Finishes: Up to 3 weeks (please allow up to 5 weeks for orders of more than 10 radiators in colours or special finishes)

Choose from our assembled stock options or build your own size by individual section, visit **www.theradiatorcompany.co.uk** to use our radiator builder.

Assembled stock options RAL 9010

390mm High

Height (mm)	Width (mm)	Sections	Model	Watts Δt 50°C	Btu's Δt 50°C
390	420	5	MIXS39X5	410	1399
	500	6	MIXS39X6	492	1679
	580	7	MIXS39X7	574	1958
	660	8	MIXS39X8	656	2238
	740	9	MIXS39X9	738	2518
	820	10	MIXS39X10	820	2798
	900	11	MIXS39X11	902	3078
	980	12	MIXS39X12	984	3357
	1060	13	MIXS39X13	1066	3637
	1140	14	MIXS39X14	1148	3917
	1220	15	MIXS39X15	1230	4197
	1300	16	MIXS39X16	1312	4477
	1380	17	MIXS39X17	1394	4756
	1460	18	MIXS39X18	1476	5036
	1540	19	MIXS39X19	1558	5316
	1620	20	MIXS39X20	1640	5596

440mm High

Height (mm)	Width (mm)	Sections	Model	Watts Δt 50°C	Btu's Δt 50°C
440	420	5	MIXS44X5	470	1604
	500	6	MIXS44X6	564	1924
	580	7	MIXS44X7	658	2245
	660	8	MIXS44X8	752	2566
	740	9	MIXS44X9	846	2887
	820	10	MIXS44X10	940	3207
	900	11	MIXS44X11	1034	3528
	980	12	MIXS44X12	1128	3849
	1060	13	MIXS44X13	1222	4169
	1140	14	MIXS44X14	1316	4490
	1220	15	MIXS44X15	1410	4811
	1300	16	MIXS44X16	1504	5132
	1380	17	MIXS44X17	1598	5452
	1460	18	MIXS44X18	1692	5773
	1540	19	MIXS44X19	1786	6094
	1620	20	MIXS44X20	1880	6415

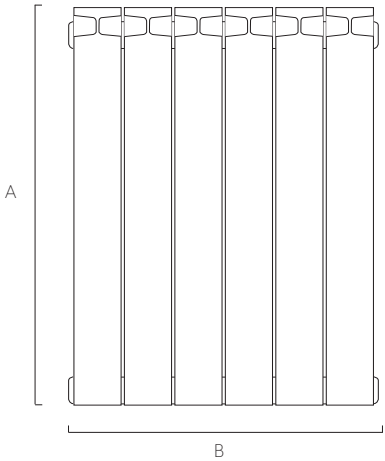


SAVE MONEY! WHEN YOU BUY OUR **IDEAL TRV KIT** WITH ANY DESIGNER ORDER*QUOTE **PROMOVI** AT TIME OF ORDER

Available in White or Chrome

Widths include measurement for bushes

Quoted prices include plugs, bushes, air vent and wall brackets.



Pipe centres left to right	Pipe centres from wall	Depth from wall
width + valves	67mm to 71mm	114mm to 118mm

Assembled stock options RAL 9010

590mm High

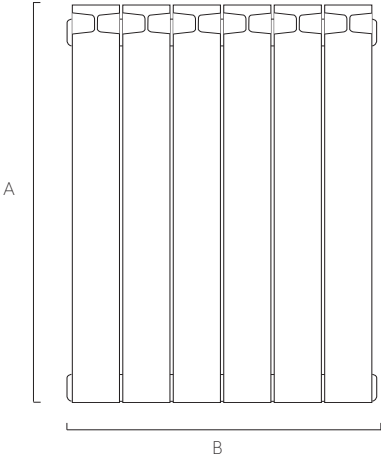
Height (mm)	Width (mm)	Sections	Model	Watts Δt 50°C	Btu's Δt 50°C
590	420	5	MIXS59X5	615	2098
	500	6	MIXS59X6	738	2518
	580	7	MIXS59X7	861	2938
	660	8	MIXS59X8	984	3357
	740	9	MIXS59X9	1107	3777
	820	10	MIXS59X10	1230	4197
	900	11	MIXS59X11	1353	4616
	980	12	MIXS59X12	1476	5036
	1060	13	MIXS59X13	1599	5456
	1140	14	MIXS59X14	1722	5875
	1220	15	MIXS59X15	1845	6295
	1300	16	MIXS59X16	1968	6715
	1380	17	MIXS59X17	2091	7134
	1460	18	MIXS59X18	2214	7554
	1540	19	MIXS59X19	2337	7974
	1620	20	MIXS59X20	2460	8394

690mm High

Height (mm)	Width (mm)	Sections	Model	Watts Δt 50°C	Btu's Δt 50°C
690	420	5	MIXS69X5	710	2423
	500	6	MIXS69X6	852	2907
	580	7	MIXS69X7	994	3392
	660	8	MIXS69X8	1136	3876
	740	9	MIXS69X9	1278	4361
	820	10	MIXS69X10	1420	4845
	900	11	MIXS69X11	1562	5330
	980	12	MIXS69X12	1704	5814
	1060	13	MIXS69X13	1846	6299
	1140	14	MIXS69X14	1988	6783
	1220	15	MIXS69X15	2130	7268
	1300	16	MIXS69X16	2272	7752
	1380	17	MIXS69X17	2414	8237
	1460	18	MIXS69X18	2556	8721
	1540	19	MIXS69X19	2698	9206
	1620	20	MIXS69X20	2840	9690

Widths include measurement for bushes

Quoted prices include plugs, bushes, air vent and wall brackets.



Stock options by section RAL 9010

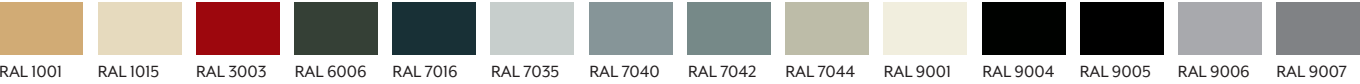
Outputs & price given per section, see page 176 for help on sizing your radiator or visit **www.theradiatorcompany.co.uk** where you will find our radiator builder.

Height (mm)	Width (mm)	Model	Watts Δt 50°C	Btu's Δt 50°C
390	80	MIX39	82	280
440		MIX44	94	321
590		MIX59	123	420
690		MIX69	142	485

Pipe centres left to right	Pipe centres from wall	Depth from wall
number of sections x 80mm + 20mm bushes + valves	67mm to 71mm	114mm to 118mm

Note: Supplied pre-assembled in up to 20 sections (1600mm), wider radiators must be joined on site.

25 RAL colours available for your Aluminium radiator to be painted in see page 197 for full range



*Saving based on the value of individual items when bought separately. Order any of our selected valves & matching pipe covers at the same time as your radiator; PROMOVIW (white), PROMOVIC (chrome).

Technical Specifications

Material	Aluminium
Connections	1/2" flow and return
Test Pressure	9 Bar
Testing Authority	EN442
Maximum operating pressure	6 Bar
Maximum working temperature	100°C
Packaging	Wrapped in polythene and boxed
Cleaning	Soft damp cloth with nonabrasive cleaning product

PLEASE NOTE: To reduce the possibility of noise caused by rapid heating and cooling of aluminium radiators; adequate capacity for expansion must be provided within the overall heating system. Systems using micro bore pipework must have adequate pressure and flow rates for the number and style of radiators on the system.

Terms & Conditions

All products must be inspected once removed from the packaging and The Radiator Company notified within 28 days of delivery of any scratches, blemishes or other damage. The Radiator Company will then replace the radiator.

Imperfect radiators should therefore not be fitted and The Radiator Company will not accept responsibility for replacement of scratched or damaged radiators once they have been fitted. This includes any consequential loss or cost of fitting.

If The Radiator Company are not notified within 28 days of the date on the signed delivery note then it will be deemed that The Radiator Company have fully complied with its obligations and claims will not be considered.

Failure to comply with any of the above may invalidate any claims.

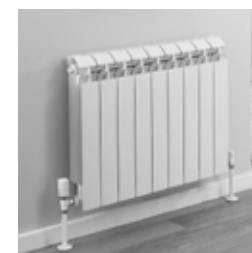
We recommend that after you check the product on delivery and that it is stored in its packaging to prevent damage prior to installation. The Radiator Company cannot accept responsibility for items damaged after delivery.

Guarantees & Liabilities

As we are not the manufacturers of this product we will take all reasonable endeavours to make over to you the benefit of any warranty or guarantee given by the manufacturer, which is usually five years on most of our range. (Copies of specific guarantees for any of our products are available on request).

The guarantees in all cases are subject to the products being installed in accordance with British and or European standards as well as these fitting instructions. The guarantees in all cases are restricted to the free of charge replacement or repair of the failed product only. Our liability will under no circumstances extend beyond the repair or replacement of the product supplied by us. Claims for either labour in replacement or damage to property are not admissible. Any goods that are returned, in the event of a problem, will belong to The Radiator Company.

Fittings Instructions



Aluminium radiators offer simple, contemporary styling matched with great outputs and economical efficiency.

Please read these instructions and terms and conditions carefully prior to installation. Failure to do so may invalidate the warranty.

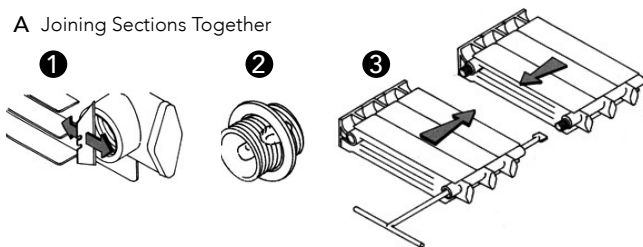
The Radiator Company
Units 13 - 14 Charlwoods Road
East Grinstead
West Sussex
RH19 2HU



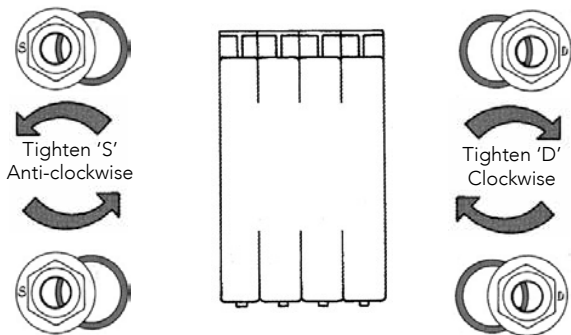
ALUM_IR_1.0

Diagrams of Aluminium Radiators

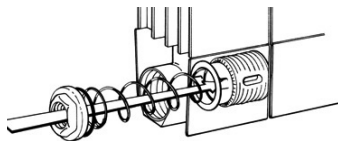
A Joining Sections Together



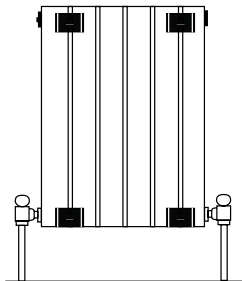
B Standard Configuration of Bushes



C Diverter Installation for Oscar



D Placement of Wall Brackets



Pipe Centres

Pipe centres left to right

no. sections x 80mm + 20mm bushes + valves

Pipe centres from wall

67mm to 71mm

Depth from wall

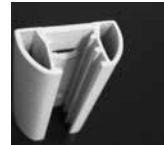
114mm to 118mm

Brackets

E



F



G



1 Unpack & Inspect

The Radiator Company prides itself on selecting products from manufacturers who exercise tight quality control measures. We only select models with excellent standards of welding and brazing, as well as high quality finishes. All of our products are well packaged and should reach you in perfect condition. Just in case however, we offer a 10 year no quibble guarantee for all aluminium radiators.



Please carefully unpack and inspect this radiator and all fittings. The Radiator Company must be notified of any shortages or damage within 28 days of delivery. For further information please see terms and conditions on back page.

2 Contents

	up to 20 sections	21 - 30 sections	31 plus sections
• Wall Brackets	4	6	8

1 Fittings pack including:

- 4 Bushes with gaskets
- 1 Airvent
- 1 Blanking Plug, if your radiator requires a plug
- 1 Air vent key

For Oscar

- All above plus 1 Spring diverter

3 Joining Sections

Very long radiators may require on-site assembly.

1. Remove excess paint from the four radiator faces to be joined together by scraping a flat knife blade across the surface.

2. Place both halves to be assembled on a flat even surface and align the joining surfaces. The radiator sections and joining nipples have one left and one right hand thread - the Nipples must be inserted correctly to avoid cross threading. **The end of the nipple with the right hand thread has a smooth edge; the end with the left hand thread has a serrated edge.** Carefully insert the barrel nipples into both waterways on one half, taking care not to damage the threads, these can be screwed in a couple of turns each. Apply a little jointing compound to the soft fibre gasket and position this gasket within the central groove on the nipple (excluding the Oscar which is a dry fit)

3. Carefully insert the joining key through the collector until it locates the barrel nipple and gradually close the halves by equal amounts until tight (please see diagram).

4 Fit Bushes

IMPORTANT NOTE:

Aluminium radiators have specific left and right hand threaded bushes and these can be easily damaged if forced or incorrectly fitted (this will inevitably cause leaks). **Bushes require a dry fit connection only; you must not use any Compound materials (e.g. Jet Blue) or Plumbers Hemp.** If you choose you may use up to 4 turns of PTFE tape to help seal the threads (the tape should be applied in the direction of the thread and no more than this amount should be used as this may cause leaks to occur)

If looking directly at the front of the radiator, the two bushes with an 'S' cast on them are positioned on the left and turned anti-clockwise. The two bushes cast with a 'D' are positioned on the right and turned clockwise.

Please see Diagram B.

5 Fit Diverter (Oscar only)

Oscar radiators over 1 metre tall are supplied with a spring diverter, which is installed in the lower waterway at either end.

This is installed by pushing the cap firmly in the waterway until it locates against the barrel nipple and is retained in place by the bush. The flow must enter this end first (please see diagram C).

6 Mark Brackets

You will have been supplied with a suitable amount of brackets for your radiator (see picture E and Contents).

The brackets are typically positioned one section in from either end with extra brackets spaced at equal distances between these two.

The two piece brackets can be adjusted both vertically, using the large dome head screw and front to back using the two positions in which the bracket hook can be placed (see picture F and G).

7 End Panels (if ordered with Vip or Oscar)

If you have end panels with your radiator, these will have a chrome cap that clips on top and a black clip that slides into the panel from the bottom which will click down onto the fins to secure.

8 Hang Radiator & Commission

With the brackets firmly fixed and level, the radiator is lowered directly onto the brackets. Connect valves and refill system, adding the correct inhibitor and check for leaks.

Please Note: In accordance with Part L1 2006 of the Building Regulations and BS7593:1992 code of practice for the treatment of hot water and central heating systems, we strongly recommend flushing the heating system post installation of new radiators and then adding the correct quantity and type of inhibitor for use with your radiator and system to prevent corrosion. Damage caused to systems not protected by a suitable inhibitor will not be covered by manufacturer's guarantee.