



NANCY

SATIN STAINLESS STEEL

MATERIAL:

- Vertical collectors in satin stainless steel \varnothing 30 mm.
- Curved horizontal elements in satin stainless steel \varnothing 18 mm.

FIXING KIT:

Brackets, airvent, hexagonal tool, plugs and screws for mounting suitable for use on compact or hollow brick, user notice.
The kit is certified from TÜV in compliance with VDI 6036-class 4.

PACKAGING:

Carton angular and profiles protected by a recyclable film in polyethylene. User notice included.

FEATURES:

It is totally made in stainless steel with an unalterable finishing guaranteed during the years.

ACCESSORIES:

See Accessories chapter

Functioning:	<input checked="" type="checkbox"/> Hot water	<input type="checkbox"/> Dual energy
--------------	---	--------------------------------------

P. Max: 8 bar	Functioning: hot water	T. Max: 110° C	Connections: 2 x 1/2" gas - 1 x 1/2" gas for airvent
---------------	------------------------	----------------	--

CERTIFICATIONS



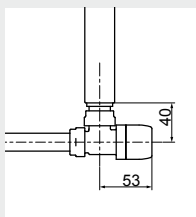
ACCESSORIES

Kristal valve square with thermostatic option-satin



Copper conn. \varnothing 12/14/15
Art. nr. 5991990321143

Multilayer conn. \varnothing 16
Art. nr. 5991990321144



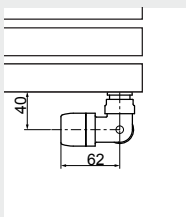
Quotes for square Kristal valves with thermostatic option

Kristal corner valve with thermostatic option-satin



Copper conn. \varnothing 12/14/15
Art. nr. 5991990321134

Multilayer conn. \varnothing 16
Art. nr. 5991990321133

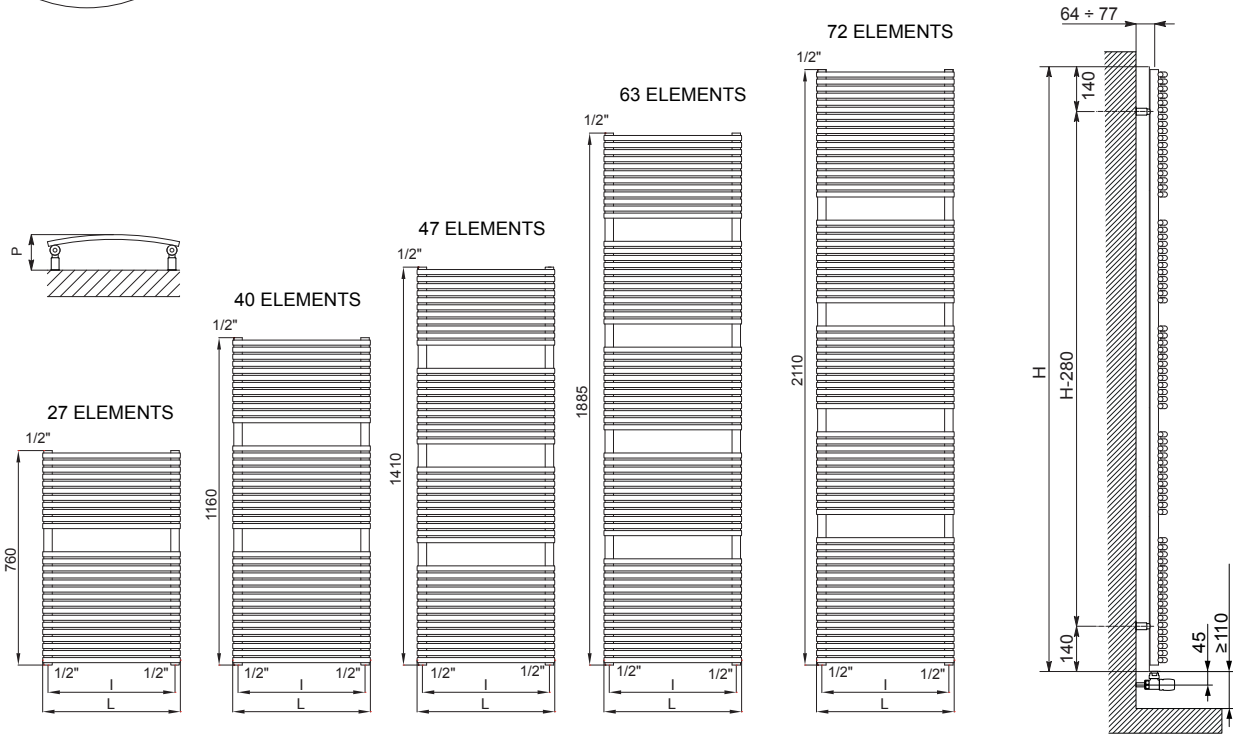
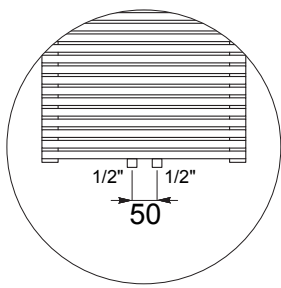


Quotes for corner Kristal valves with thermostatic option

Kit 2 hooks-satin stainless steel



Art. nr. 5991990010217



Quotes for Kristal valves

NANCY SATIN STAINLESS STEEL

Height [mm]	WIDTH L [mm]	Pipe Centres l [mm]	Art. nr.	Pipe Centres 50 mm				Thermal output [Watt]			Dual energy kit [Watt]	
				Art. nr.	p [mm]	Dry Weight [Kg]	Surface [m ²]	Water content [lt]	Δt=50°C	Δt=30°C		Exp. n
760	387	350	3551440132550	3551440132564	106 - 116	8,1	0,8	3,6	307	161	1,2644	300
	488	450	3551440132554	3551440132568	111 - 121	9,6	1,0	4,2	405	216	1,2262	500
1160	387	350	3551440132551	3551440132565	106 - 116	11,2	1,1	5,0	418	219	1,2673	500
	488	450	3551440132555	3551440132569	111 - 121	13,1	1,3	5,7	540	287	1,2342	600
1410	589	550	3551440132559	3551440132573	118 - 128	15,1	1,6	6,5	662	356	1,2138	700
	387	350	3551440132552	3551440132566	106 - 116	14,2	1,4	6,4	531	278	1,2702	600
	488	450	3551440132556	3551440132570	111 - 121	16,6	1,7	7,3	677	359	1,2423	700
1885	589	550	3551440132560	3551440132574	118 - 128	19,1	2,0	8,3	824	441	1,2248	900
	387	350	3551440132553	3551440132567	106 - 116	17,1	1,7	7,8	646	337	1,2731	700
	488	450	3551440132557	3551440132571	111 - 121	20,2	2,1	8,9	819	432	1,2530	900
2110	589	550	3551440132561	3551440132575	118 - 128	23,1	2,4	10,0	992	528	1,2359	1200
	488	450	3551440132558	3551440132572	111 - 121	23,7	2,4	10,5	966	508	1,2583	1200
	589	550	3551440132562	3551440132576	118 - 128	27,1	2,8	11,8	1168	618	1,2470	1200
	793	750	3551440132563	3551440132577	136 - 146	34,1	3,5	14,4	1574	838	1,2333	1200

For output at different Δt than 50°C, please refer to the following formula: desired output = output at Δt 50°C x (desired Δt/50)ⁿ



NANCY

POLISHED STAINLESS STEEL



WARRANTY
10 YEARS

MATERIAL:

- Vertical collectors in polished stainless steel \varnothing 30 mm.
- Curved horizontal elements in polished stainless steel \varnothing 18 mm.

FIXING KIT:

Brackets, airvent, hexagonal tool, plugs and screws for mounting suitable for use on compact or hollow brick, user notice.
The kit is certified from TÜV in compliance with VDI 6036-class 4.

PACKAGING:

Carton angular and profiles protected by a recyclable film in polyethylene. User notice included.

FEATURES:

It is totally made in stainless steel with an unalterable finishing guaranteed during the years.

ACCESSORIES:

See Accessories chapter

Functioning:	<input checked="" type="checkbox"/> Hot water	<input checked="" type="checkbox"/> Dual energy
--------------	---	---

P. Max: 8 bar	Functioning: hot water	T. Max: 110° C	Connections: 2 x 1/2" gas - 1 x 1/2" gas for airvent
---------------	------------------------	----------------	--

CERTIFICATIONS



ACCESSORIES



Kristal valve square with thermostatic option-chromed

Copper conn. \varnothing 12/14/15
Art. nr. 5991990311165

Multilayer conn. \varnothing 16
Art. nr. 5991990311166



Kristal corner valve with thermostatic option-chromed

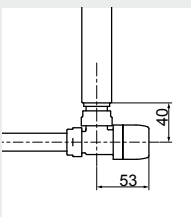
Copper conn. \varnothing 12/14/15
Art. nr. 5991990301148

Multilayer conn. \varnothing 16
Art. nr. 5991990301147

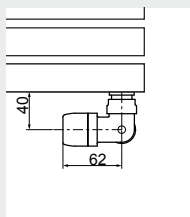


Kit 2 hooks-polished stainless steel

Art. nr. 5991990010216

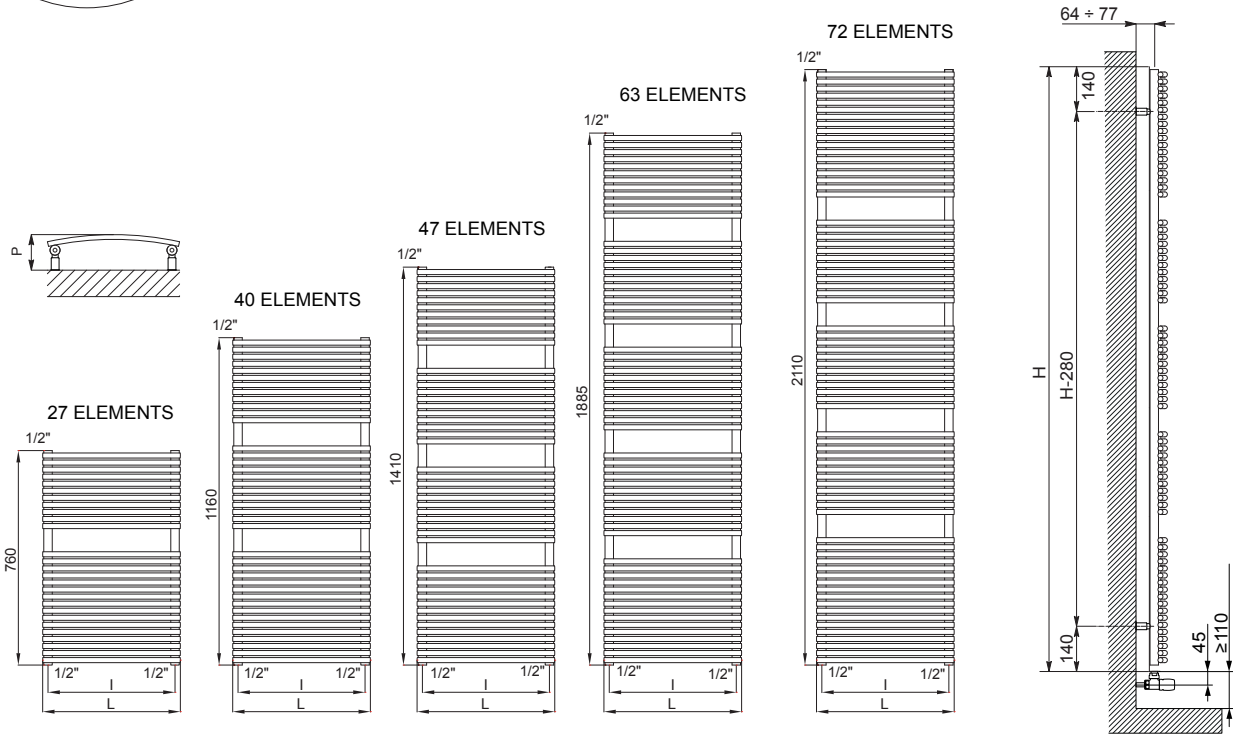
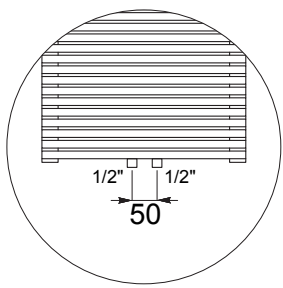


Quotes for square Kristal valves with thermostatic option



Quotes for corner Kristal valves with thermostatic option

Accessories and spare parts - see Accessories chapter



Quotes for Kristal valves

NANCY POLISHED STAINLESS STEEL

Height [mm]	WIDTH L [mm]	Pipe Centres l [mm]	Art. nr.
760	387	350	3551440132050
	488	450	3551440132054
1160	387	350	3551440132051
	488	450	3551440132055
1410	589	550	3551440132059
	387	350	3551440132052
	488	450	3551440132056
1885	589	550	3551440132060
	387	350	3551440132053
	488	450	3551440132057
2110	589	550	3551440132061
	488	450	3551440132058
	793	750	3551440132063

Pipe Centres 50 mm	
Art. nr.	
3551440132064	
3551440132068	
3551440132065	
3551440132069	
3551440132073	
3551440132066	
3551440132070	
3551440132074	
3551440132067	
3551440132071	
3551440132075	
3551440132072	
3551440132076	
3551440132077	

p [mm]	Dry Weight [Kg]	Surface [m ²]	Water content [lt]	Thermal output [Watt]		Exp. n	Dual energy kit [Watt]
				Δt=50°C	Δt=30°C		
106 - 116	8,1	0,8	3,6	301	157	1,2729	300
111 - 121	9,6	1,0	4,2	396	211	1,2354	400
106 - 116	11,2	1,1	5,0	408	213	1,2726	500
111 - 121	13,1	1,3	5,7	527	280	1,2386	600
118 - 128	15,1	1,6	6,5	646	347	1,2175	700
106 - 116	14,2	1,4	6,4	514	268	1,2724	600
111 - 121	16,6	1,7	7,3	658	349	1,2419	700
118 - 128	19,1	2,0	8,3	801	429	1,2227	900
106 - 116	17,1	1,7	7,8	621	324	1,2722	700
111 - 121	20,2	2,1	8,9	789	418	1,2451	900
118 - 128	23,1	2,4	10,0	958	512	1,2280	900
111 - 121	23,7	2,4	10,5	922	487	1,2483	900
118 - 128	27,1	2,8	11,8	1116	594	1,2332	1200
136 - 146	34,1	3,5	14,4	1505	809	1,2150	1200

For output at different Δt than 50°C, please refer to the following formula: desired output = output at Δt 50°C x (desired Δt/50)ⁿ

ARDESIA®

TOWEL RAILS

ELECTRIC RADIATORS AND FAN HEATER

INOX RANGE

LIVING DESIGN RADIATORS

VENTILATED RADIATORS

MODELS FOR REPLACEMENT

MY WAY® SYSTEM

ACCESSORIES AND TECHNICAL SUPPORT