

FARADAY® Type 11 (K1)

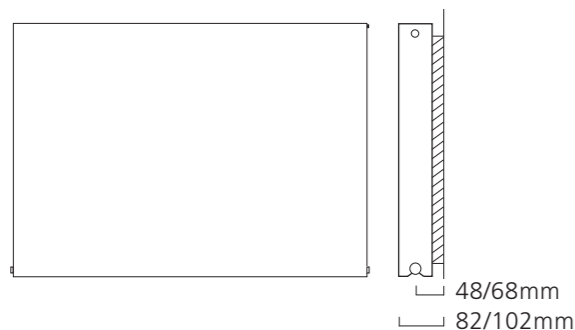
- Smooth Plain Front with a Single Flat Panel and a Single Convectector
- Available in 3 heights and 12 widths
- Standard White RAL 9016 delivered in 48-72 hours
- 25 RAL colours, 8 special finishes, up to 15 working days (page 11)



Sizes and Prices

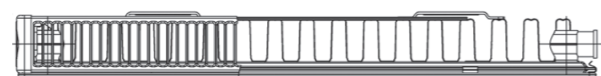
Dimensions (mm)			Output Δt 50°C		Product Code
Height	Width	Depth	Watts	Btu's	
400	400	65	271	925	FARA404011
	600	65	407	1389	FARA406011
	800	65	542	1849	FARA408011
	1000	65	678	2313	FARA401011
	1100	65	746	2545	FARA401111
	1200	65	814	2777	FARA401211
	1400	65	949	3238	FARA401411
	1600	65	1085	3702	FARA401611
	1800	65	1220	4163	FARA401811
	2000	65	1356	4627	FARA402011
500	400	65	327	1116	FARA504011
	600	65	491	1675	FARA506011
	800	65	654	2231	FARA508011
	1000	65	818	2791	FARA501011 ♦
	1100	65	900	3071	FARA501111
	1200	65	982	3351	FARA501211
	1400	65	1145	3907	FARA501411
	1600	65	1309	4466	FARA501611
	1800	65	1472	5022	FARA501811
	2000	65	1636	5582	FARA502011
600	400	65	381	1300	FARA604011
	600	65	572	1952	FARA606011
	700	65	667	2276	FARA607011
	800	65	762	2600	FARA608011
	900	65	858	2927	FARA609011
	1000	65	953	3252	FARA601011
	1100	65	1048	3576	FARA601111
	1200	65	1144	3903	FARA601211
	1400	65	1334	4552	FARA601411
	1600	65	1525	5203	FARA601611
	1800	65	1715	5852	FARA601811
	2000	65	1906	6503	FARA602011

Pipe Centres and Technical Drawings



Type 11 (K1) Profile

Single steel panel with a single convectector.



Pipe centres left to right = Width plus valves
 Pipe centres from wall = 48mm / 68mm
 Depth from wall = 82mm / 102mm

© FARADAY is a registered trademark of IRSAP UK Limited



♦ FARADAY® Type 11 (K1) Horizontal 500mm x 1000mm in White RAL 9016 shown with WELLINGTON TRV's and White Radsnaps.

FLAT PANEL Horizontal Fitting Instructions



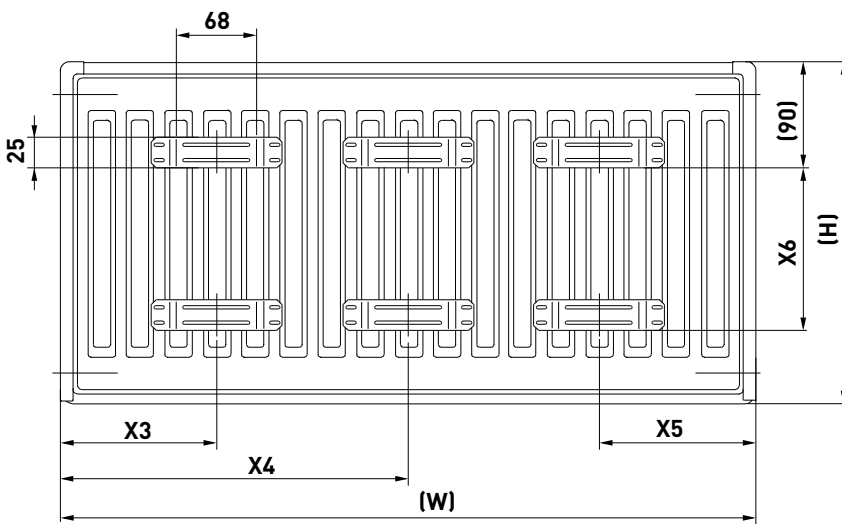
Steel Flat Panel Radiator

Type 11(K1) , Type 21(P+) Type 22 (K2)

Please read these instructions and terms and conditions carefully prior to installation.
Failure to do so may invalidate the warranty.

Drawings

Fig 1 - Fixing Positions for Brackets



Bracket drawing

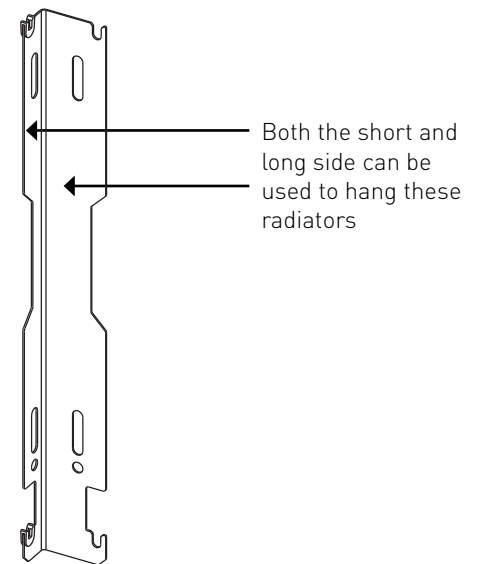
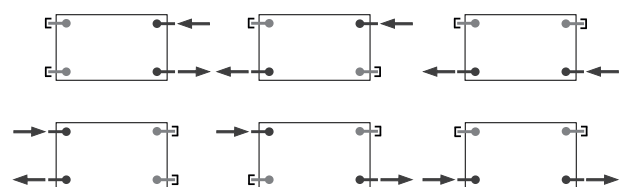


Table of Sizes

Width W (mm)		400	500-1600	1800	2000
X3 / X5	Type 11	117	150	150	150
	Type 21,22	133	133	133	133
X4	Type 11	-	-	883	983
	Type 21,22	-	-	900	1000

Height H (mm)	300	400	500	600	900
X6	145	245	345	445	745



Pipe Centres

	Type 11 (K1)	Type 21 (P+)	Type 22 (K2)
Pipe centres left to right	= width plus valves	width plus valves	width plus valves
Pipe centres from wall	= 48mm/68mm	56mm/76mm	73mm/93mm
Depth from wall	= 82mm/102mm <i>shorter/longer side</i>	91mm/111mm <i>shorter/longer side</i>	125mm/145mm <i>shorter/longer side</i>

1. Unpack & Inspect

This product should have reached you in perfect condition. Please carefully unpack and inspect this radiator and all fittings. Your point of purchase must be notified of any shortages or damage within 28 days of delivery. For further information please see terms and conditions on reverse.

2. Contents

You should have:

- 2 x L – Brackets (3 for 1800 to 2000 wide)
- 4 x plastic inserts (6 for 1800 to 2000 wide)
- 4 x 6x50 Screw (6 for 1800 to 2000 wide)
- 4 x Washer (6 for 1800 to 2000 wide)
- 4 x wall plug (6 for 1800 to 2000 wide)

You will need:

- Tape measure
- Electric drill and bits
- Spirit level
- Airvent key
- Appropriate wall fixings
- Spanners for airvents / valves

Cleaning: Steel products can be cleaned using a soft damp cloth with a non-abrasive cleaning product.

3. Installing radiator

1. Position the radiator against the wall in the desired position. Lightly mark either side of the radiator.
2. Mark up position of brackets referring to **Fig 1** for precise measurements. Using a spirit level mark on the vertical lines on bracket positions.
3. Ascertain desired height of radiator and mark. Measure down 112mm from the desired height and mark on vertical line. This will give the position of the top fixing point of the bracket. Offer up bracket to this mark and on the vertical line mark position of lower fixing point. Repeat for other bracket(s) ensuring brackets are straight horizontally.
4. Fix brackets with suitable fixings, fit plastic inserts, hang radiator and fix pipework.

4. Commission Radiator

Please Note: In accordance with Part L1 2006 of the Building Regulations and BS7593:1992 code of practice for the treatment of hot water and central heating systems, we strongly recommend flushing the heating system post installation of new radiators and then adding the correct quantity and type of inhibitor for use with your radiator and system to prevent corrosion. Damage caused to systems not protected by a suitable inhibitor will not be covered by manufacturer's guarantee.

Technical Specifications

Materials	Steel
Connections	½" flow and return.
Test pressure	13 Bar
Testing authority	EN442
Maximum operating pressure	10 Bar
Maximum working temperature	110°C
Packaging	Corrugated cardboard, plastic reinforcing corner covers, polyethylene shrinking foil.

PLEASE NOTE: Systems using micro bore pipework must have adequate pressure and flow rates for the number and style of radiators on the system.

Guarantees & Liabilities

This product is guaranteed for 10 years. As we are not the manufacturers of this product we will take all reasonable endeavours to make over to you the benefit of any warranty or guarantee given by the manufacturer.

The guarantees in all cases are subject to the products being installed in accordance with British and or European standards as well as these fitting instructions. The guarantees in all cases are restricted to the free of charge replacement or repair of the failed product only. Our liability will under no circumstances extend beyond the repair or replacement of the product supplied by us. Claims for either labour in replacement or damage to property are not admissible. Any goods that are returned, in the event of a problem, will belong to us.

Terms & Conditions

All products must be inspected once removed from the packaging and your point of purchase notified within 28 days of delivery of any scratches, blemishes or other damage. Your point of purchase will then agree appropriate action.

Imperfect radiators should therefore not be fitted and we will not accept responsibility for replacement of scratched or damaged radiators once they have been fitted. This includes any consequential loss or cost of fitting.

If we are not notified within 28 days of the date on the signed delivery note then it will be deemed that we have fully complied with our obligations and claims will not be considered. Failure to comply with any of the above may invalidate any claims. We recommend that after you check the product on delivery that it is stored in its packaging to prevent damage prior to installation, we cannot accept responsibility for items damaged after delivery.