

WITTON Type 11

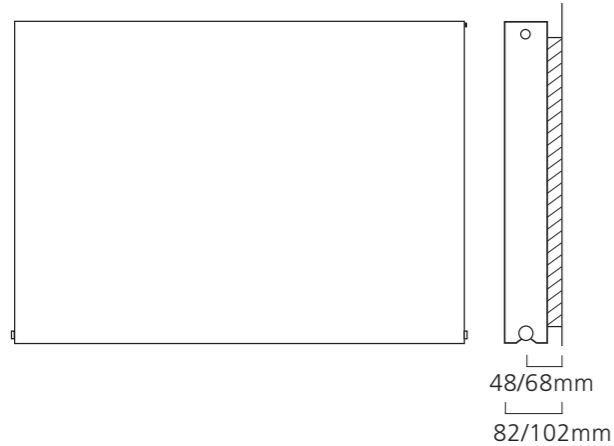
- Grooved Front with a Single Flat Panel and a Single Convactor
- Available in 3 heights and up to 10 widths
- Standard White RAL 9016 delivered in 48-72 hours
- 25 RAL colours, 8 special finishes, up to 15 working days (page 11)



Sizes and Prices

Dimensions (mm)			Output Δt 50°C		Product Code
Height	Width	Depth	Watts	Btu's	
400	800	65	542	1849	WITT408011
	1000	65	678	2313	WITT401011
	1200	65	814	2777	WITT401211
500	400	65	327	1116	WITT504011
	600	65	491	1675	WITT506011
	800	65	654	2231	WITT508011
	1000	65	818	2791	WITT501011
600	1200	65	982	3351	WITT501211
	400	65	381	1300	WITT604011
	600	65	572	1952	WITT606011
	700	65	667	2276	WITT607011
	800	65	762	2600	WITT608011
	900	65	858	2927	WITT609011
	1000	65	953	3252	WITT601011 ♦
1100	65	1048	3576	WITT601111	
1200	65	1144	3903	WITT601211	
1400	65	1334	4552	WITT601411	

Pipe Centres and Technical Drawings



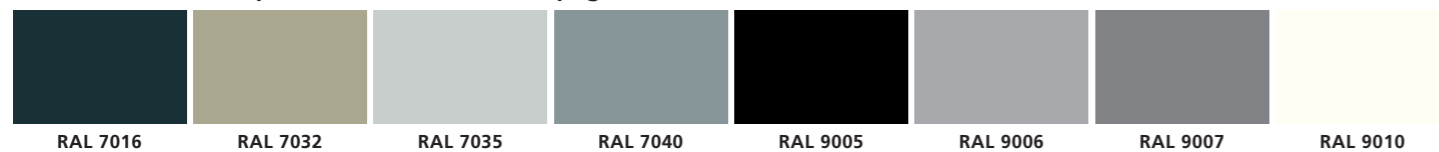
WITTON Type 11 (K1) Profile

Single steel panel with a single convactor.



Pipe centres left to right = Width plus valves
 Pipe centres from wall = 48mm / 68mm
 Depth from wall = 82mm / 102mm

25 RAL Colours & 8 special finishes available (page 11 for more details)



Please note: Due to printing processes & manufacturing tolerances the colour of finished radiators may vary from the colours represented in this brochure.



♦ WITTON Type 11 (K1) 600mm x 1000mm in RAL 9016 shown with White KINGSTON TRV's & matching Pipe Covers & Shrouds.

WITTON Horizontal Fitting Instructions

Steel Flat Panel Radiator

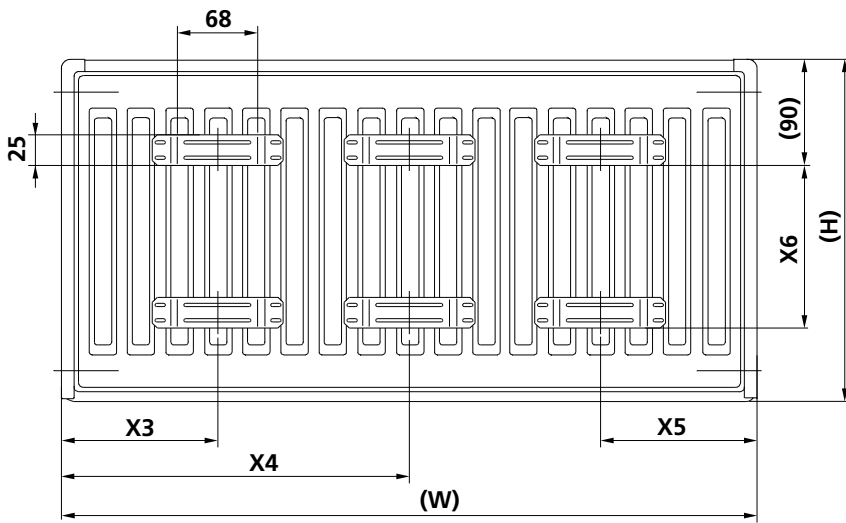
WITTON Type 11(K1), WITTON Type 22 (K2)

Please read these instructions and terms and conditions carefully prior to installation.
Failure to do so may invalidate the warranty.



Drawings

Fig 1 - Fixing Positions for Brackets



Bracket drawing



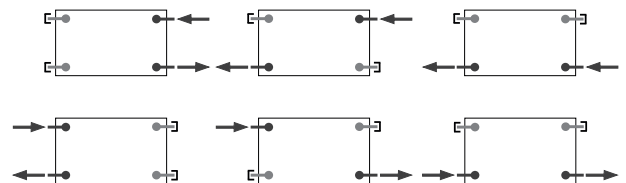
Both the short and long side can be used to hang these radiators

133

Table of Sizes

Width W (mm)		400	500-1600	1800	2000
X3 / X5	Type 11	117	150	150	150
	Type 22	133	133	133	133
X4	Type 11	-	-	883	983
	Type 22	-	-	900	1000

Height H (mm)	300	400	500	600	900
X6	145	245	345	445	745



Pipe Centres

	WITTON Type 11 (K1)	WITTON Type 22 (K2)
Pipe centres left to right	= width plus valves	width plus valves
Pipe centres from wall	= 48mm/68mm	73mm/93mm
Depth from wall	= 82mm/102mm	125mm/145mm
	<i>shorter/longer side</i>	<i>shorter/longer side</i>

1. Unpack & Inspect

This product should have reached you in perfect condition. Please carefully unpack and inspect this radiator and all fittings. Your point of purchase must be notified of any shortages or damage within 28 days of delivery. For further information please see terms and conditions on reverse.

2. Contents

You should have:

- 2 x L – Brackets (3 for 1800 to 2000 wide)
- 4 x plastic inserts (6 for 1800 to 2000 wide)
- 4 x 6x50 Screw (6 for 1800 to 2000 wide)
- 4 x Washer (6 for 1800 to 2000 wide)
- 4 x wall plug (6 for 1800 to 2000 wide)

You will need:

- Tape measure
- Electric drill and bits
- Spirit level
- Airvent key
- Appropriate wall fixings
- Spanners for airvents / valves

Cleaning: Steel products can be cleaned using a soft damp cloth with a non-abrasive cleaning product.

3. Installing radiator

1. Position the radiator against the wall in the desired position. Lightly mark either side of the radiator.
2. Mark up position of brackets referring to **Fig 1** for precise measurements. Using a spirit level mark on the vertical lines on bracket positions.
3. Ascertain desired height of radiator and mark. Measure down 112mm from the desired height and mark on vertical line. This will give the position of the top fixing point of the bracket. Offer up bracket to this mark and on the vertical line mark position of lower fixing point. Repeat for other bracket(s) ensuring brackets are straight horizontally.
4. Fix brackets with suitable fixings, fit plastic inserts, hang radiator and fix pipework.

4. Commission Radiator

Please Note: In accordance with Part L1 2006 of the Building Regulations and BS7593:1992 code of practice for the treatment of hot water and central heating systems, we strongly recommend flushing the heating system post installation of new radiators and then adding the correct quantity and type of inhibitor for use with your radiator and system to prevent corrosion. Damage caused to systems not protected by a suitable inhibitor will not be covered by manufacturer's guarantee.

Technical Specifications

Materials	Steel
Connections	½" flow and return.
Test pressure	13 Bar
Testing authority	EN442
Maximum operating pressure	10 Bar
Maximum working temperature	110°C
Packaging	Corrugated cardboard, plastic reinforcing corner covers, polyethylene shrinking foil.

Guarantees & Liabilities

This product is guaranteed for 10 years. As we are not the manufacturers of this product we will take all reasonable endeavours to make over to you the benefit of any warranty or guarantee given by the manufacturer.

The guarantees in all cases are subject to the products being installed in accordance with British and or European standards as well as these fitting instructions. The guarantees in all cases are restricted to the free of charge replacement or repair of the failed product only. Our liability will under no circumstances extend beyond the repair or replacement of the product supplied by us. Claims for either labour in replacement or damage to property are not admissible. Any goods that are returned, in the event of a problem, will belong to us.

Terms & Conditions

All products must be inspected once removed from the packaging and your point of purchase notified within 28 days of delivery of any scratches, blemishes or other damage. Your point of purchase will then agree appropriate action.

Imperfect radiators should therefore not be fitted and we will not accept responsibility for replacement of scratched or damaged radiators once they have been fitted. This includes any consequential loss or cost of fitting.

If we are not notified within 28 days of the date on the signed delivery note then it will be deemed that we have fully complied with our obligations and claims will not be considered.

Failure to comply with any of the above may invalidate any claims. We recommend that after you check the product on delivery that it is stored in its packaging to prevent damage prior to installation, we cannot accept responsibility for items damaged after delivery.

For full details of our Terms and Conditions please visit www.supplies4heat.co.uk or call us on 01342 306880.