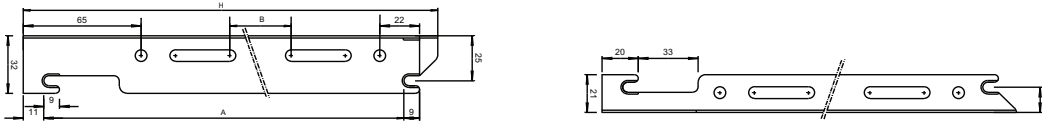
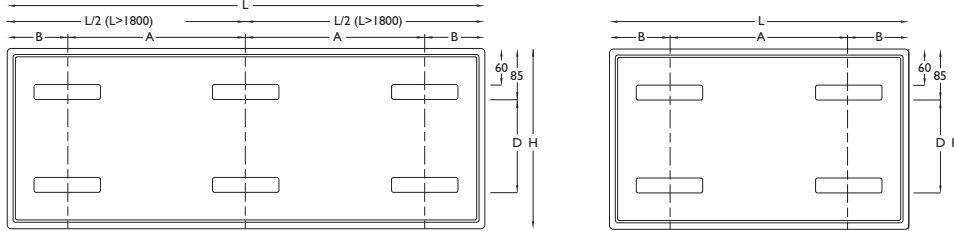


# Ultraheat Planal Horizontal - Technical Information

## Concealed Wall Brackets 300, 400, 500, 600, 700, 900mm

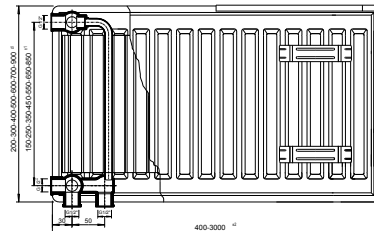
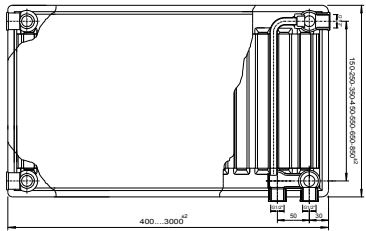


Height	H	A	B
300	185	155	-
400	285	255	90
500	385	355	190
600	485	455	290
700	585	555	390
900	785	755	590



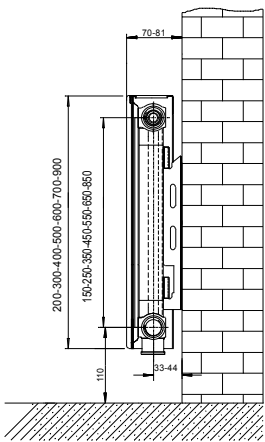
FRONT VIEW

REAR VIEW

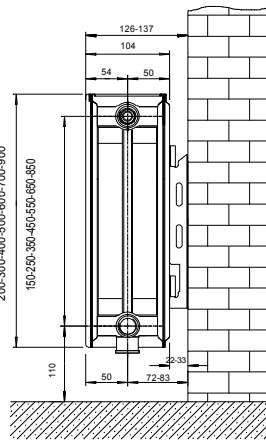


Radiator Length L (mm)	PHS-PDS-PTS		PSS		Rows of Bracket Lugs
	A (mm)	B (mm)	A (mm)	B (mm)	
400	200	100	170	115	2
500	300	100	270	115	2
600	400	100	370	115	2
700	500	100	470	115	2
800	600	100	570	115	2
900	700	100	670	115	2
1000	800	100	770	115	2
1100	900	100	870	115	2
1200	1000	100	970	115	2
1300	1100	100	1070	115	2
1400	1200	100	1170	115	2
1600	1400	100	1370	115	2
1800	800	100	785	115	3
2000	900	100	885	115	3

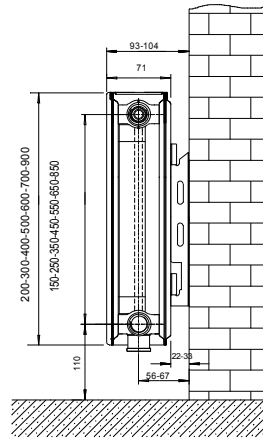
Δ Factors in C Other Than Δ T50					
64C	1.380	48C	0.948	32C	0.558
62C	1.324	46C	0.897	30C	0.513
60C	1.268	44C	0.846	28C	0.469
58C	1.213	42C	0.796	26C	0.426
56C	1.159	40C	0.747	24C	0.383
54C	1.105	38C	0.699	22C	0.342
52C	1.052	36C	0.651	20C	0.302
50C	1.000	34C	0.604		



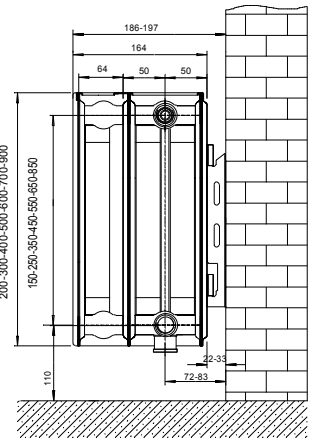
PSS SINGLE PANEL SINGLE CONVECTOR



PDS DOUBLE PANEL DOUBLE CONVECTOR



PHS DOUBLE PANEL SINGLE CONVECTOR



PTS TRIPLE PANEL TRIPLE CONVECTOR

WATER CONTENT, WEIGHT & HEAT OUTPUTS TO EN442: ΔT 60C PER METER LENGTH																		
HEIGHT			Single- PSS				Single+ PHS				Double- PDS				Triple- PTS			
	inch	mm	Litre	Kg	Watts	Btu	Litre	Kg	Watts	Btu	Litre	Kg	Watts	Btu	Litre	Kg	Watts	Btu
7.8	200																	
11.8	300		1.41	10.5	658	2247								4.00	20.5	1078	3681	
15.7	400		1.95	14.5	848	2896	4.20	22.6	1272	4344	4.29	24.8	1640	5601	6.36	35.7	2009	6861
19.7	500		2.46	17.7	1019	3480	5.10	27.5	1530	5225	5.19	30.4	1970	6728	7.62	43.6	2414	8244
23.6	600		3.00	21.7	1181	4033	5.79	33.7	1774	6058	5.91	37.4	2275	7769	8.91	53.7	2787	9518
27.6	700		3.51	24.8	1330	4542	6.66	39.5	2069	7066	6.81	41.6	2556	8729	10.17	60.6	3115	10638
35.4	900		4.11	31.2	1595	5447	7.65				7.80	53.4	3051	10419	12.00	97.0	3705	12653