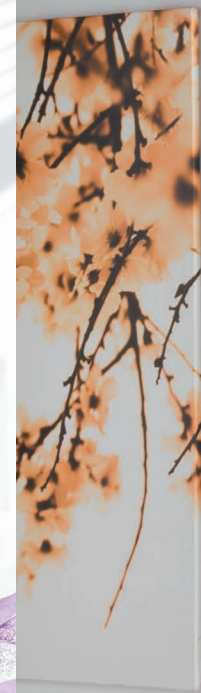


Piano



Double horizontal 456mm x 1220mm in Black Sparkle with Chrome Corner Ideal TRV's



Double vertical 1820mm x 456mm in White RAL 9016 with Ideal TRV's

Piano horizontal

shown on pages 54-55

High quality Italian design & manufacture.
Steel; 50mm flat tubes with 30mm collectors
UKCA approved & certified to BS EN442

White RAL 9016 as standard, 188 RAL colours plus 30 Special Finishes
Please call **01342 302250** for a RAL or Special Finish chart
Colour Co-ordination Service available on stock sizes see pages 6-7 for full details.

Stock White RAL 9016: 48-72 Hours
Made to Order sizes & colours: Up to 5 weeks

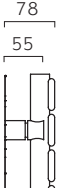


SAVE MONEY! WHEN YOU BUY OUR **IDEAL TRV KIT** WITH ANY DESIGNER ORDER*QUOTE **PROMOVI** AT TIME OF ORDER

Available in White or Chrome



Pipe centres left to right	Pipe centres from wall	Depth from wall
width - 50mm	55mm	78mm



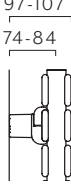
Stock options White RAL 9016 - Single Horizontal

Height (mm)	Width (mm)	Model	Watts Δt 50°c	Btu's Δt 50°c
344	920	PIANSH349206	357	1218
400	520	PIANSH405207	234	798
	920	PIANSH409207	414	1413
	1220	PIANSH401207	549	1873
512	920	PIANSH519209	525	1791
	1220	PIANSH511209	696	2375
624	920	PIANSH629211	634	2163
	1220	PIANSH621211	841	2869
	1520	PIANSH621511	1048	3576

Made to order options - Single Horizontal

Height (mm)	Width (mm)	Model	Watts Δt 50°c	Btu's Δt 50°c
344	520	PIANSH345206	202	689
	700	PIANSH347006	272	928
	1220	PIANSH341206	474	1617
	1520	PIANSH341506	590	2013
	1820	PIANSH341806	707	2412
400	2020	PIANSH342006	785	2678
	700	PIANSH407007	315	1075
	1520	PIANSH401507	684	2334
	1820	PIANSH401807	819	2794
	2020	PIANSH402007	909	3102
456	1220	PIANSH451208	623	2126
512	700	PIANSH517009	399	1361
	1520	PIANSH511509	868	2962
	1820	PIANSH511809	1039	3545
	2020	PIANSH512009	1153	3934
624	700	PIANSH627011	482	1645
	1820	PIANSH621811	1254	4279
	2020	PIANSH622011	1392	4750
736	700	PIANSH737013	563	1921
	920	PIANSH739213	740	2525
	1220	PIANSH731213	982	3351
	1520	PIANSH731513	1223	4173
	1820	PIANSH731813	1465	4999
	2020	PIANSH732013	1626	5548

Pipe centres left to right	Pipe centres from wall	Depth from wall
width - 50mm	74mm to 84mm	97mm to 107mm



Stock options White RAL 9016 - Double Horizontal

Height (mm)	Width (mm)	Model	Watts Δt 50°c	Btu's Δt 50°c
344	920	PIANDH349206	557	1900
400	520	PIANDH405207	357	1218
	920	PIANDH409207	632	2156
	1220	PIANDH401207	838	2859
512	920	PIANDH519209	777	2651
	1220	PIANDH511209	1031	3518
624	920	PIANDH629211	916	3125
	1220	PIANDH621211	1214	4142
	1520	PIANDH621511	1513	5162

Made to order options - Double Horizontal

Height (mm)	Width (mm)	Model	Watts Δt 50°c	Btu's Δt 50°c
344	520	PIANDH345206	315	1075
	700	PIANDH347006	424	1447
	1220	PIANDH341206	739	2521
	1520	PIANDH341506	921	3142
	1820	PIANDH341806	1103	3763
	2020	PIANDH342006	1224	4176
400	700	PIANDH407007	481	1641
	1520	PIANDH401507	1044	3562
	1820	PIANDH401807	1251	4268
	2020	PIANDH402007	1388	4736
456	1220	PIANDH451208	937	3197
512	700	PIANDH517009	591	2016
	1520	PIANDH511509	1285	4384
	1820	PIANDH511809	1538	5248
	2020	PIANDH512009	1707	5824
624	700	PIANDH627011	697	2378
	1820	PIANDH621811	1812	6183
	2020	PIANDH622011	2011	6862
736	700	PIANDH737013	797	2719
	920	PIANDH739213	1048	3576
	1220	PIANDH731213	1390	4743
	1520	PIANDH731513	1732	5910
	1820	PIANDH731813	2074	7076
	2020	PIANDH732013	2302	7854

Piano vertical

shown on pages 54-55

High quality Italian design & manufacture.
Steel; 50mm flat tubes with 30mm collectors
UKCA approved & certified to BS EN442

White RAL 9016 as standard, 188 RAL colours plus 30 Special Finishes
Please call **01342 302250** for a RAL or Special Finish chart
Colour Co-ordination Service available on stock sizes see pages 6-7 for full details.

Stock White RAL 9016: 48-72 Hours
Made to Order sizes & colours: Up to 5 weeks

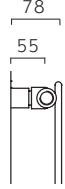


SAVE MONEY! WHEN YOU BUY OUR **IDEAL TRV KIT** WITH ANY DESIGNER ORDER*QUOTE **PROMOVI** AT TIME OF ORDER

Available in White or Chrome



Pipe centres left to right	Pipe centres from wall	Depth from wall
width + valves	55mm	78mm



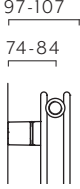
Stock options White RAL 9016 - Single Vertical

Height (mm)	Width (mm)	Model	Watts Δt 50°c	Btu's Δt 50°c
1220	512	PIANSV125109	675	2303
1520	288	PIANSV152805	462	1576
	400	PIANSV154007	647	2208
	512	PIANSV155109	832	2839
	624	PIANSV156211	1017	3470
1820	288	PIANSV182805	550	1877
	400	PIANSV184007	769	2624
	512	PIANSV185109	989	3374
	624	PIANSV186211	1209	4125

Made to order options - Single Vertical

Height (mm)	Width (mm)	Model	Watts Δt 50°c	Btu's Δt 50°c
520	400	PIANSV524007	239	815
	512	PIANSV525109	307	1047
	624	PIANSV526211	375	1280
	736	PIANSV527313	443	1512
920	848	PIANSV528415	511	1744
	288	PIANSV922805	286	976
	400	PIANSV924007	401	1368
	512	PIANSV925109	515	1757
1220	624	PIANSV926211	630	2150
	288	PIANSV122805	375	1280
	400	PIANSV124007	525	1791
1820	624	PIANSV126211	825	2815
	456	PIANSV184508	879	2999
	288	PIANSV202805	608	2074
	400	PIANSV204007	851	2904
2020	456	PIANSV204508	973	3320
	512	PIANSV205109	1095	3736
	624	PIANSV206211	1338	4565

Pipe centres left to right	Pipe centres from wall	Depth from wall
width + valves	78mm - 84mm	97mm - 107mm



Stock options White RAL 9016 - Double Vertical

Height (mm)	Width (mm)	Model	Watts Δt 50°c	Btu's Δt 50°c
1220	512	PIANDV125109	973	3320
1520	288	PIANDV152805	660	2252
	400	PIANDV154007	924	3153
	512	PIANDV155109	1189	4057
	624	PIANDV156211	1453	4958
1820	288	PIANDV182805	778	2655
	400	PIANDV184007	1090	3719
	512	PIANDV185109	1401	4780
	624	PIANDV186211	1712	5841

Made to order options - Double Vertical

Height (mm)	Width (mm)	Model	Watts Δt 50°c	Btu's Δt 50°c
520	400	PIANDV524007	351	1198
	512	PIANDV525109	452	1542
	624	PIANDV526211	552	1883
	736	PIANDV527313	652	2225
920	848	PIANDV528415	753	2569
	288	PIANDV922805	419	1430
	400	PIANDV924007	587	2003
	512	PIANDV925109	754	2573
1220	624	PIANDV926211	922	3146
	288	PIANDV122805	541	1846
	400	PIANDV124007	757	2583
1820	624	PIANDV126211	1190	4060
	456	PIANDV184508	1245	4248
	288	PIANDV202805	857	2924
	400	PIANDV204007	1199	4091
2020	456	PIANDV204508	1370	4674
	512	PIANDV205109	1542	5261
	624	PIANDV206211	1884	6428

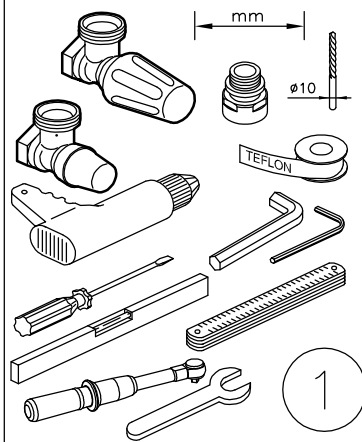
*Saving based on the value of individual items when bought separately. Order any of our selected valves & matching pipe covers at the same time as your radiator; PROMOVIW (white), PROMOVIC (chrome).

*Saving based on the value of individual items when bought separately. Order any of our selected valves & matching pipe covers at the same time as your radiator; PROMOVIW (white), PROMOVIC (chrome).

PIANO single VERTICAL
PIANO single HORIZONTAL

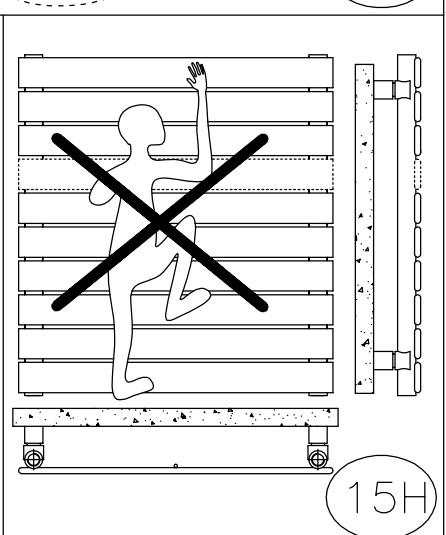
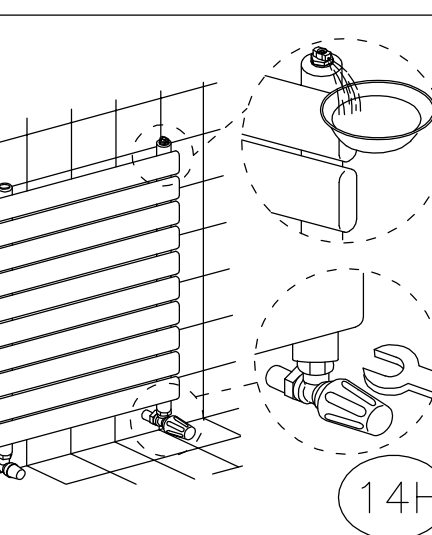
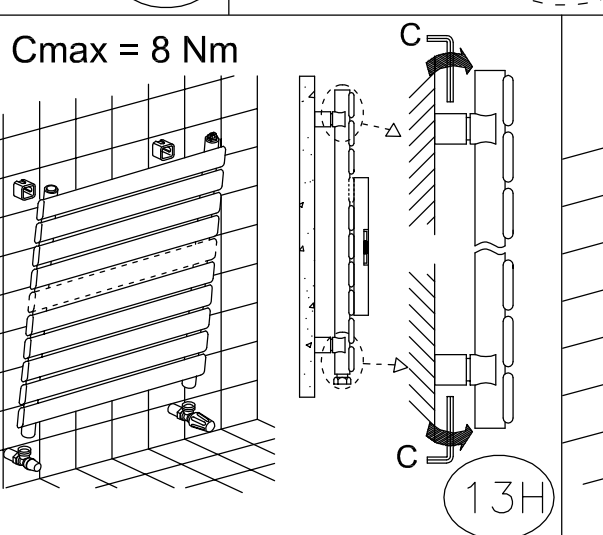
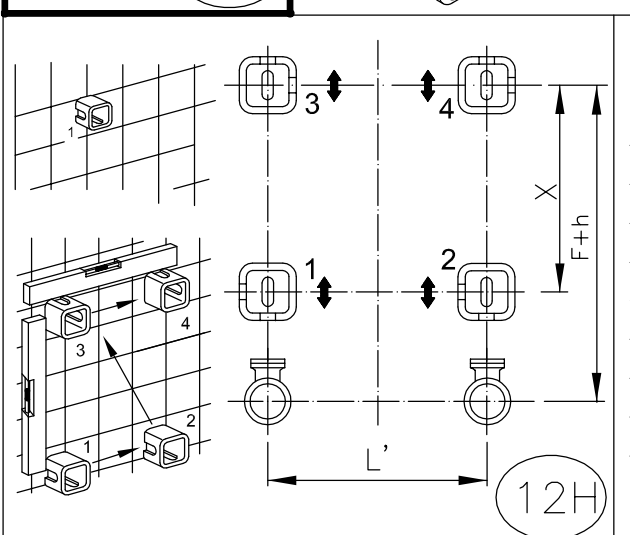
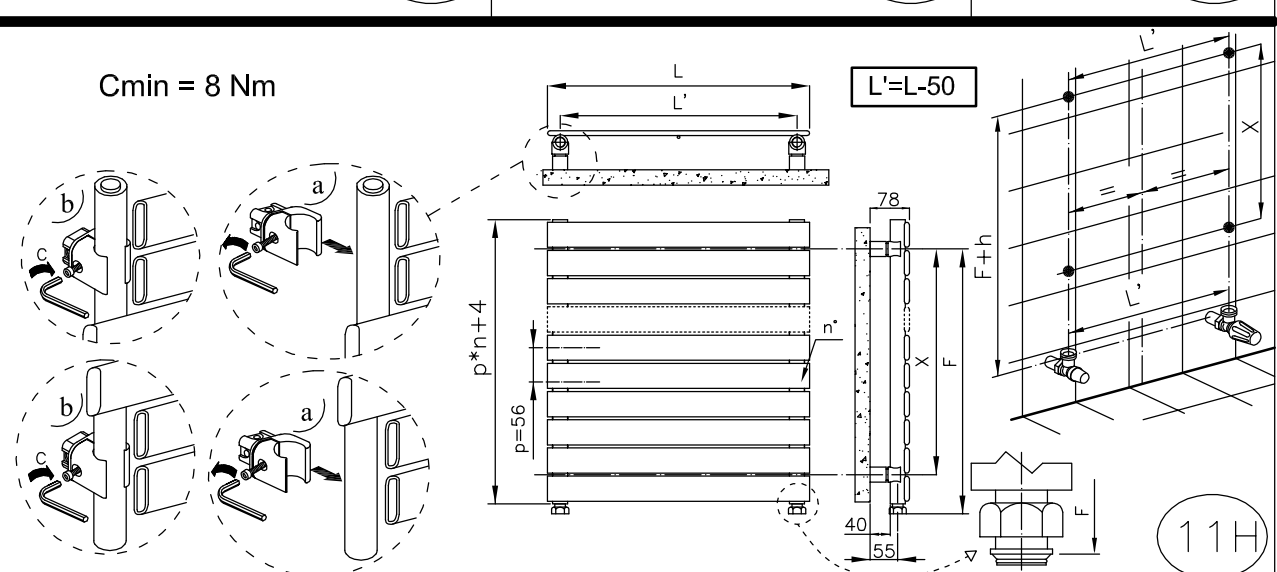
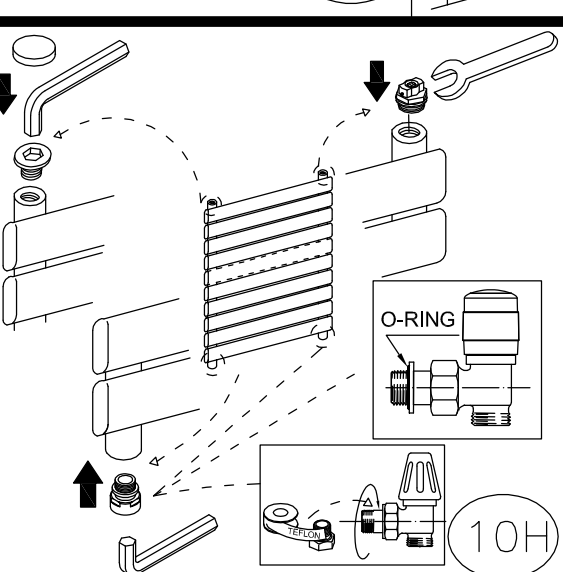
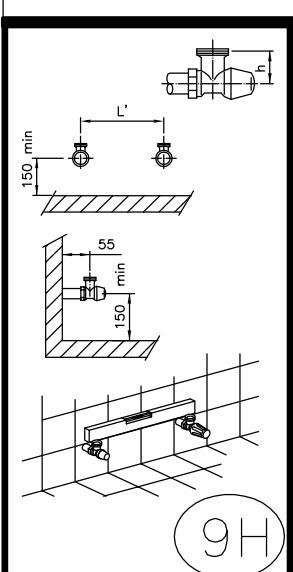
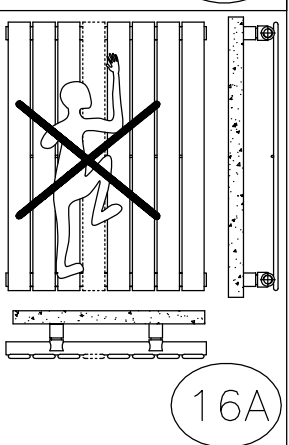
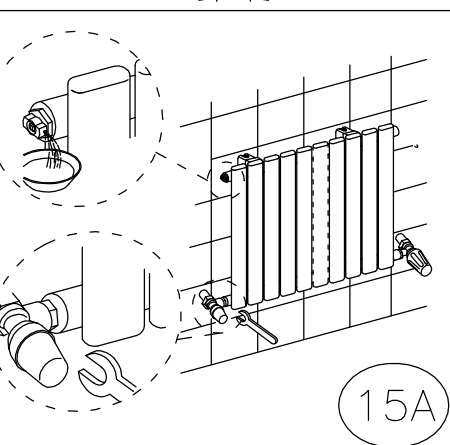
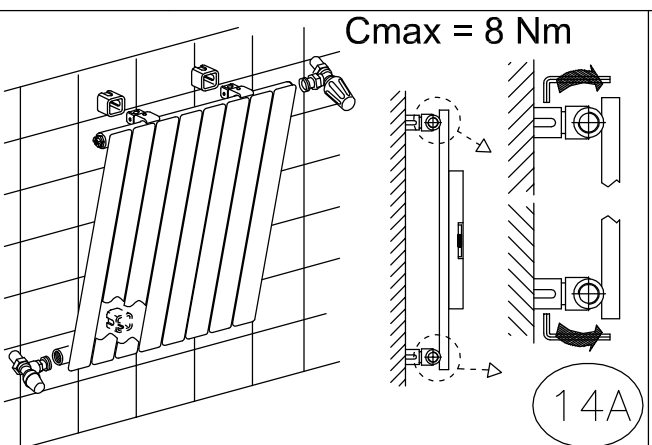
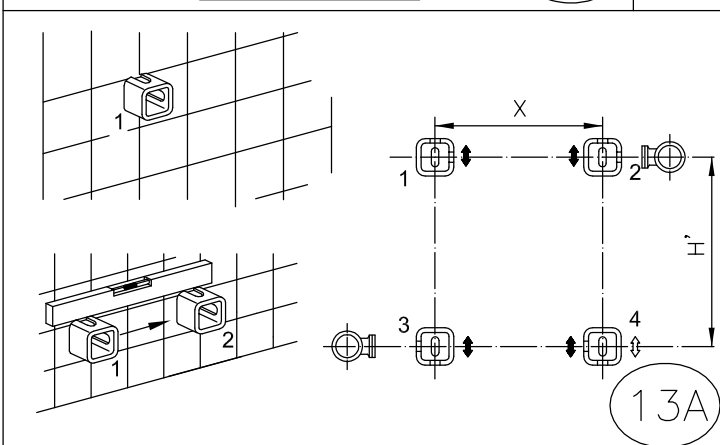
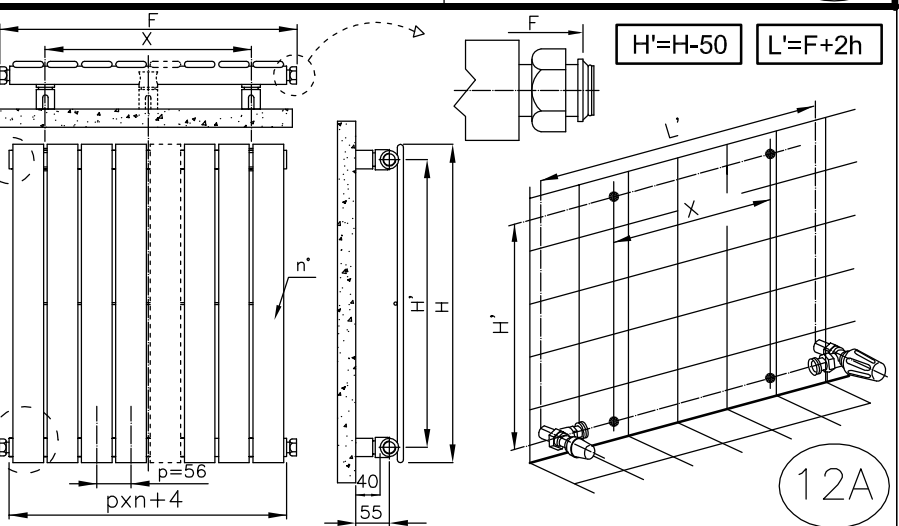
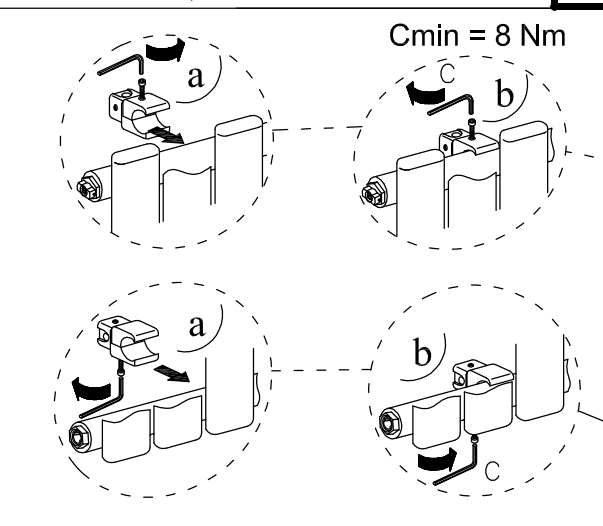
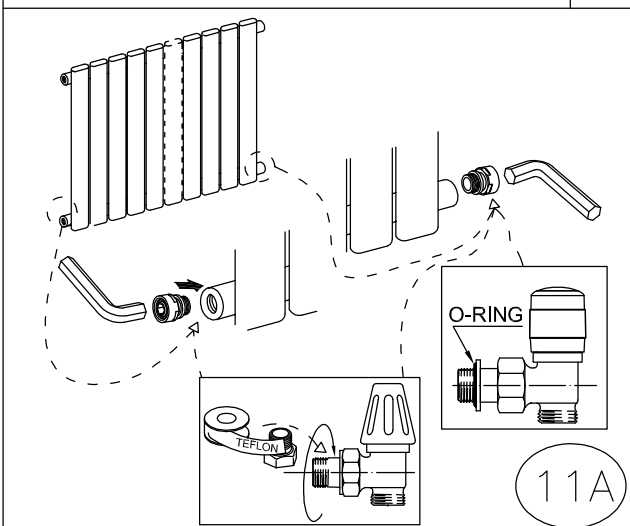
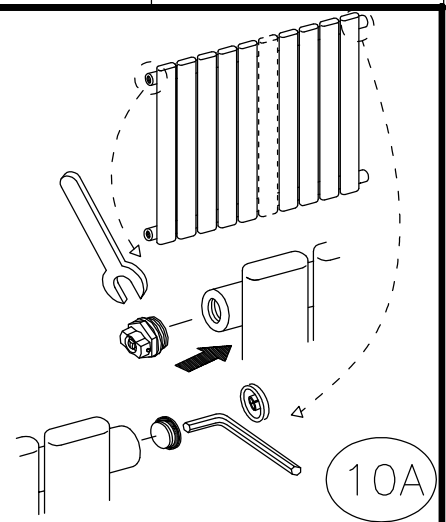
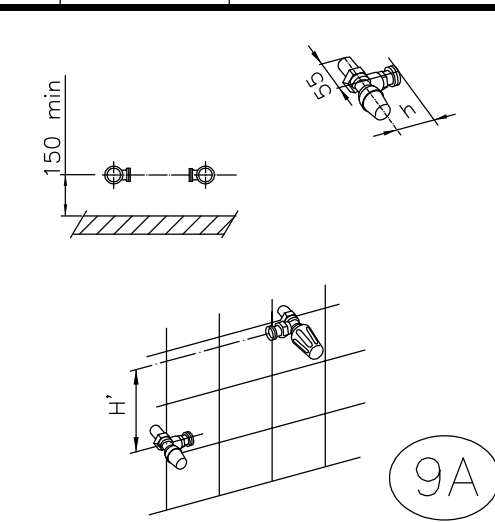
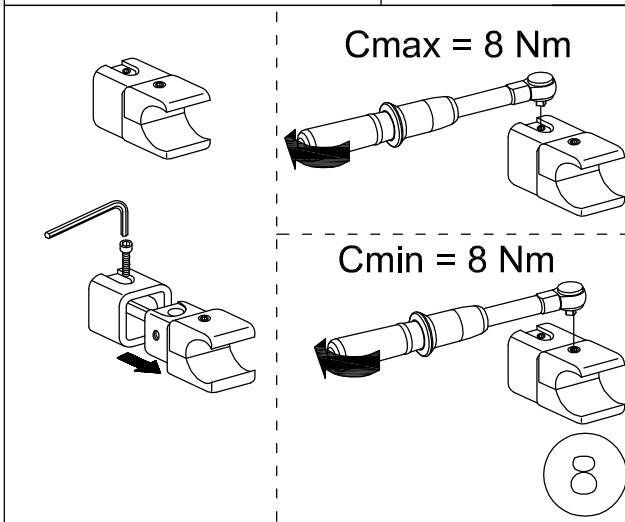
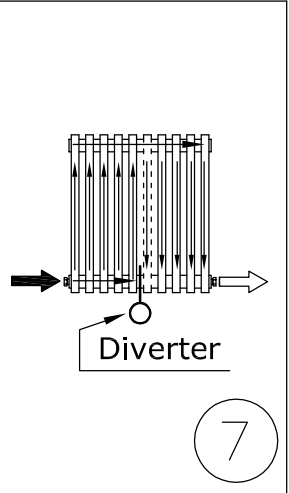
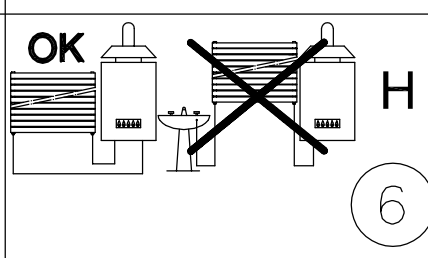
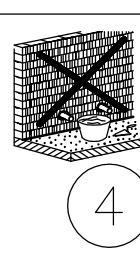
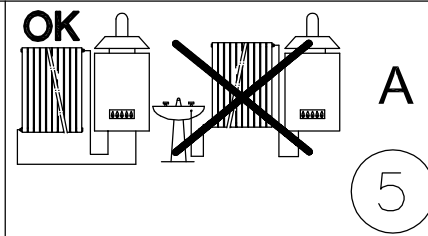
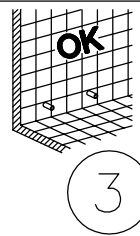
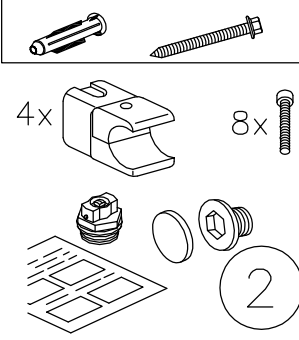
Fitting Instructions

Accessories not included



Accessories included

Dowels and screws to be used only on compact walls or hollow bricks.



COMMISSION

Please Note: In accordance with Part L1 2006 of the Building Regulations and BS7593:1992 code of practice for the treatment of hot water and central heating systems, we strongly recommend flushing the heating system post installation of new radiators and then adding the correct quantity and type of inhibitor for use with your radiator and system to prevent corrosion. Damage caused to systems not protected by a suitable inhibitor will not be covered by manufacturer’s guarantee.

TECHNICAL SPECIFICATIONS

Materials	Mild Steel.
Connections	½ flow and return.
Test pressure	6 Bar
Testing authority	EN 442
Maximum operating pressure	4 Bar
Maximum working temperature	95°C
Packaging	Wrapped in polyethylene with cardboard box.
PLEASE NOTE: Systems using micro bore pipework must have adequate pressure and flow rates for the number and style of radiators on the system.	

TERMS & CONDITIONS

All products must be inspected once removed from the packaging and The Radiator Company notified within 28 days of delivery of any scratches, blemishes or other damage.

The Radiator Company will then replace the radiator.

Imperfect radiators should therefore not be fitted and The Radiator Company will not accept responsibility for replacement of scratched or damaged radiators once they have been fitted. This includes any consequential loss or cost of fitting.

If The Radiator Company are not notified within 28 days of the date on the signed delivery note then it will be deemed that The Radiator Company have fully complied with its obligations and claims will not be considered.

Failure to comply with any of the above may invalidate any claims.

We recommend that after you check the product on delivery that it is stored in its packaging to prevent damage prior to installation. The Radiator Company cannot accept responsibility for items damaged after delivery.

GUARANTEES & LIABILITIES

This product is guaranteed for 10 years . The guarantee is subject to the product being installed in accordance with British and or European standards as well as these fitting instructions. The guarantee in all cases are restricted to the free of charge replacement or repair of the failed product only. Our liability will under no circumstances extend beyond the repair or replacement of the product supplied by us. Claims for either labour in replacement or damage to property are not admissible. Any goods that are returned, in the event of a problem, will belong to The Radiator Company.

The Radiator Company
Units 13 - 14 Charlwoods Road
East Grinstead
West Sussex
RH19 2HU

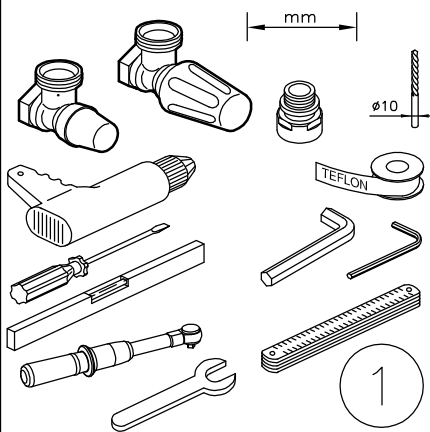
A brand of **IRSAP SPA**, Italy’s leading manufacturer of design led radiators.

If you have any questions please contact us on 01342 302250
www.theradiatorcompany.co.uk

PIANO double VERTICAL PIANO double HORIZONTAL

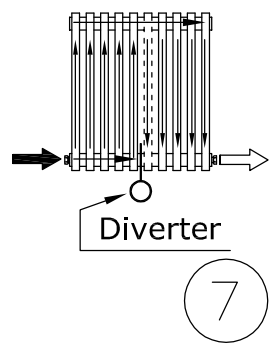
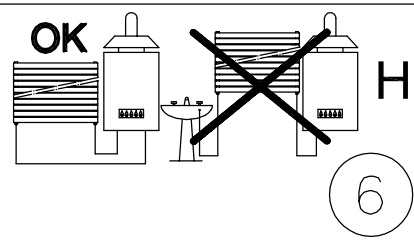
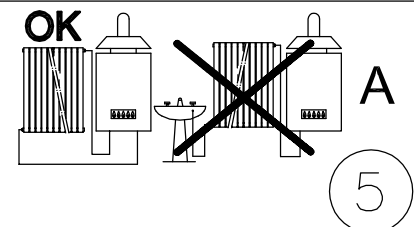
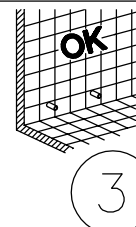
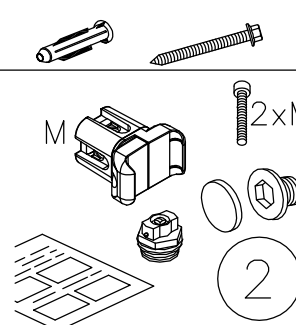
Fitting Instructions

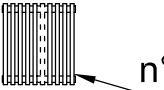
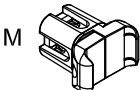
Accessories not included



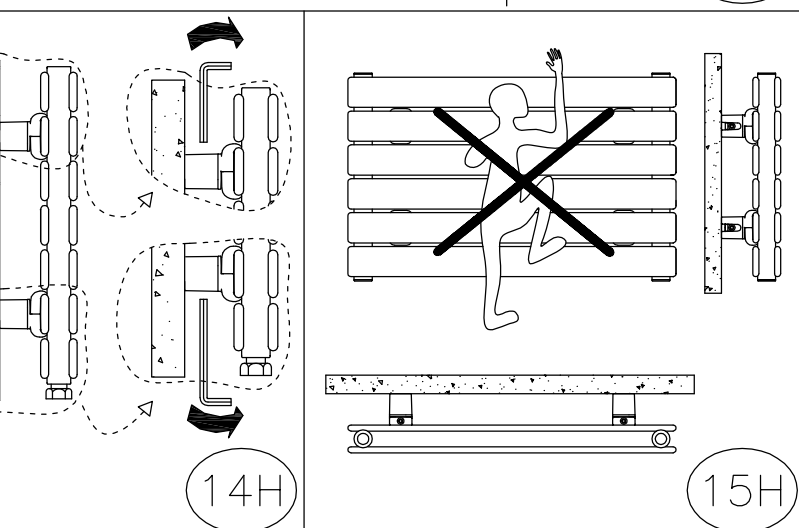
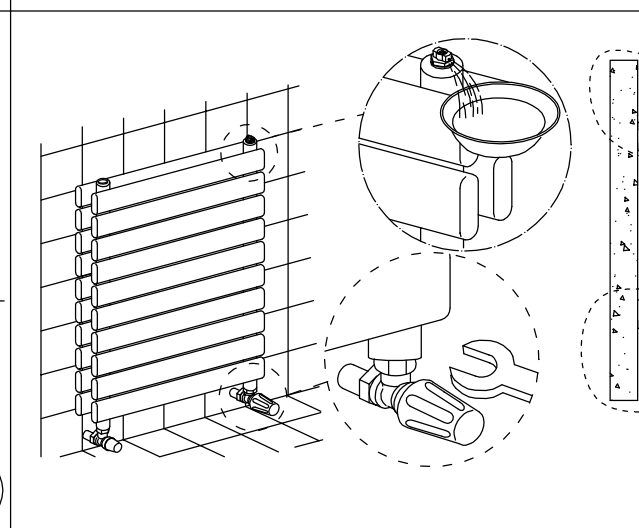
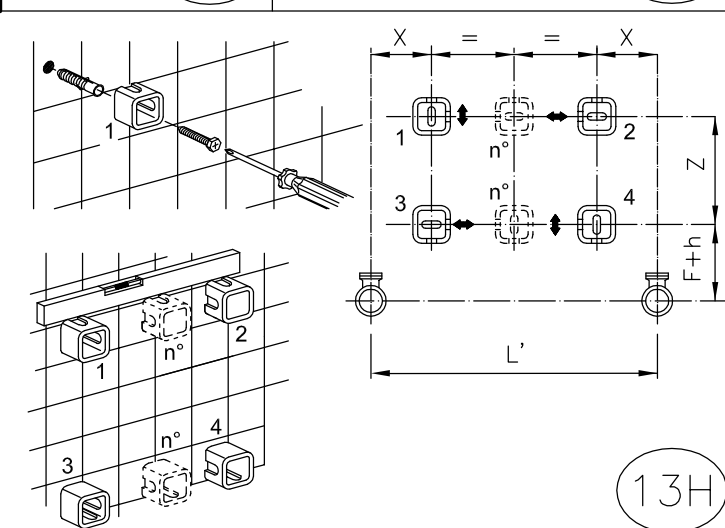
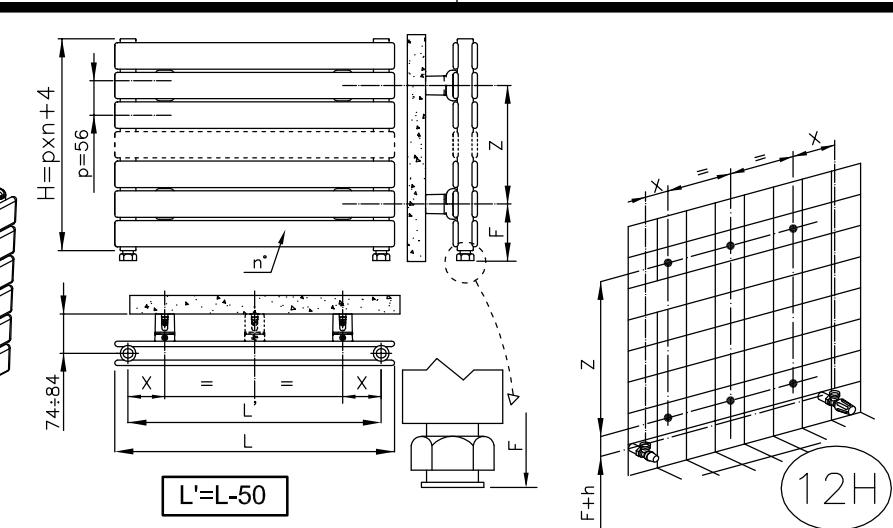
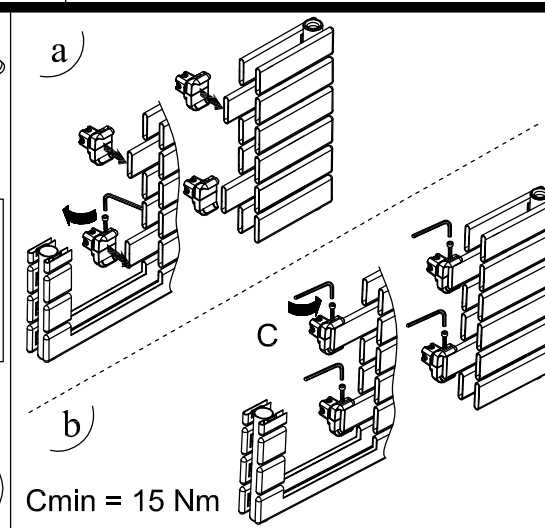
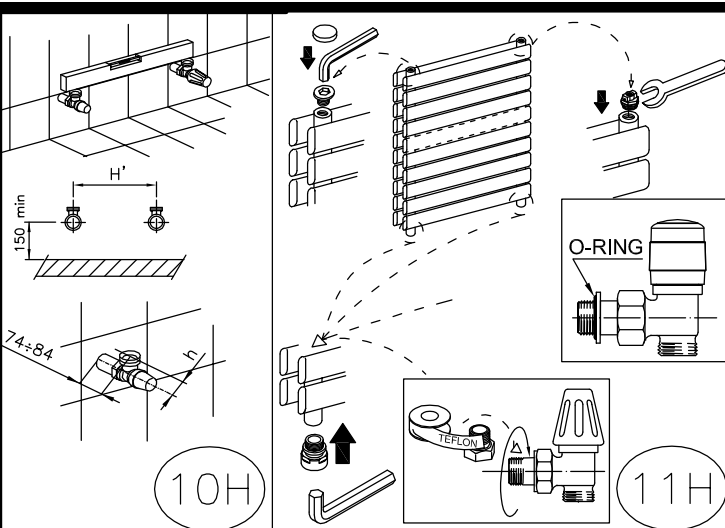
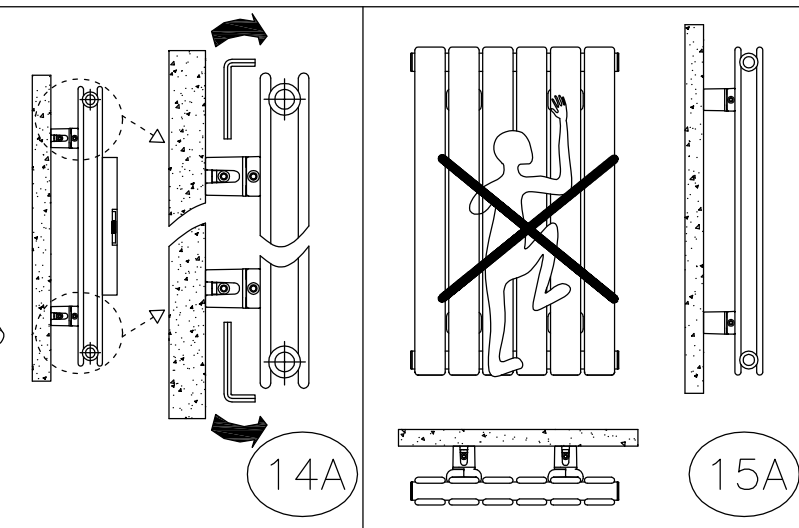
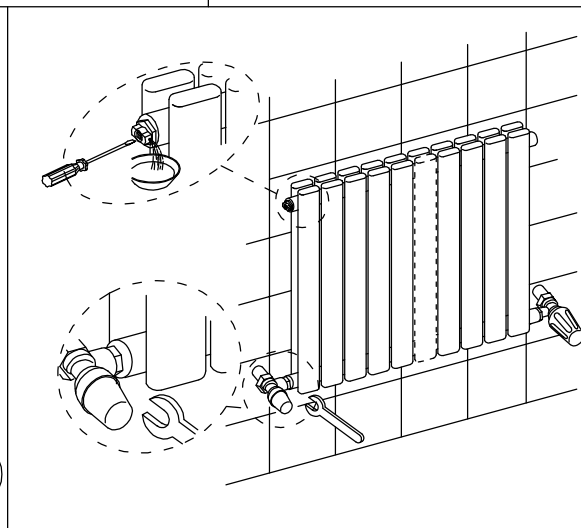
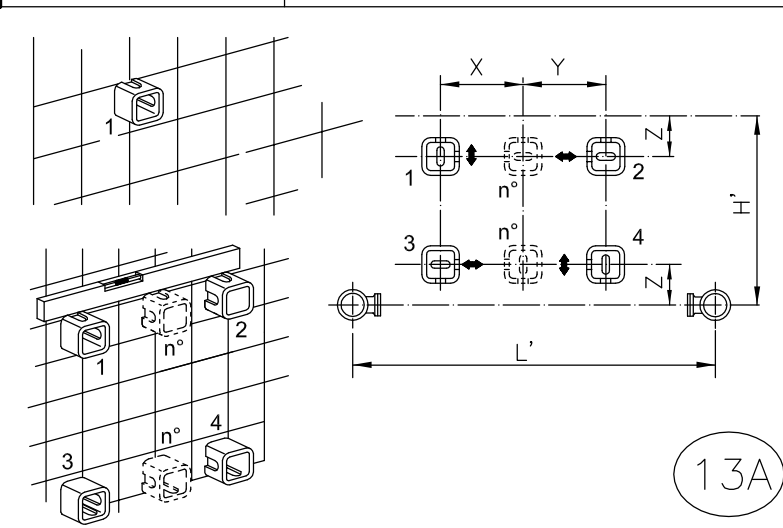
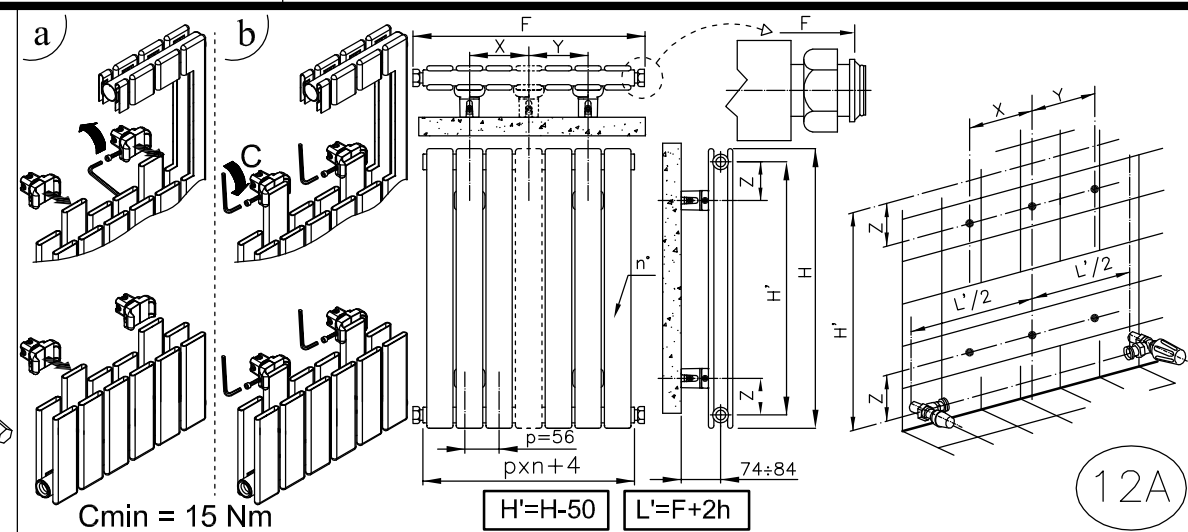
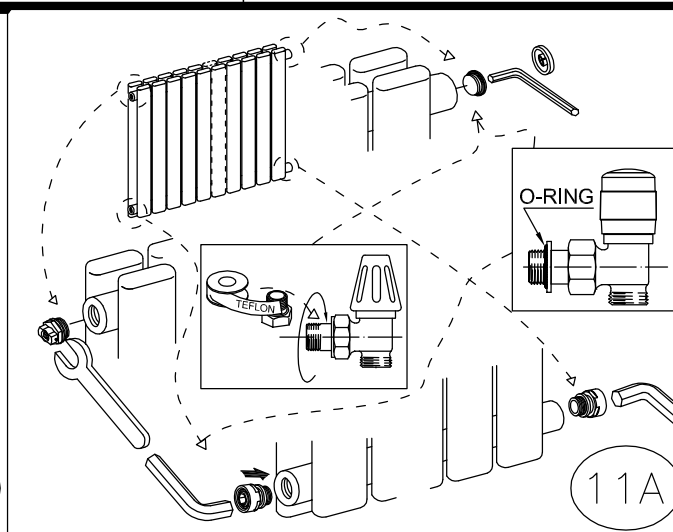
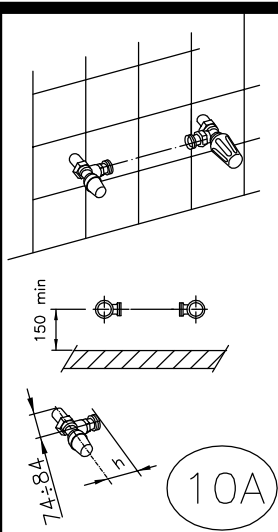
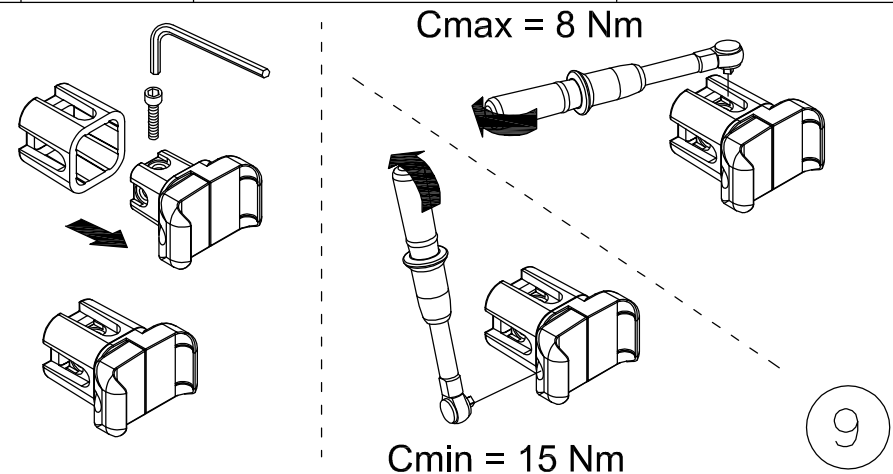
Accessories included

Dowels and screws to be used only on compact walls or hollow bricks.



															
n° sections															
4÷17		18	19	20	21	22	23	24	25	26	27	28	29÷30		
H		M													
420	4	4	4	4	4	4	4	4	4	4	4	4	4		
520	4	4	4	4	4	4	4	4	4	4	4	4	4		
700	4	4	4	4	4	4	4	4	4	4	4	4	4		
920	4	4	4	4	4	4	4	4	4	4	4	4	4		
1220	4	4	4	4	4	4	4	4	4	4	4	4	4		
1520	4	4	4	4	4	4	4	4	4	4	4	4	6	6	
1820	4	4	4	4	4	4	4	6	6	6	6	6	6	6	
2020	4	4	4	4	4	6	6	6	6	6	6	6	6	6	

8



COMMISSION

Please Note: In accordance with Part L1 2006 of the Building Regulations and BS7593:1992 code of practice for the treatment of hot water and central heating systems, we strongly recommend flushing the heating system post installation of new radiators and then adding the correct quantity and type of inhibitor for use with your radiator and system to prevent corrosion. Damage caused to systems not protected by a suitable inhibitor will not be covered by manufacturer’s guarantee.

TECHNICAL SPECIFICATIONS

Materials	Mild Steel.
Connections	½ flow and return.
Test pressure	6 Bar
Testing authority	EN 442
Maximum operating pressure	4 Bar
Maximum working temperature	95°C
Packaging	Wrapped in polyethylene with cardboard box.
PLEASE NOTE: Systems using micro bore pipework must have adequate pressure and flow rates for the number and style of radiators on the system.	

TERMS & CONDITIONS

All products must be inspected once removed from the packaging and The Radiator Company notified within 28 days of delivery of any scratches, blemishes or other damage.

The Radiator Company will then replace the radiator.

Imperfect radiators should therefore not be fitted and The Radiator Company will not accept responsibility for replacement of scratched or damaged radiators once they have been fitted. This includes any consequential loss or cost of fitting.

If The Radiator Company are not notified within 28 days of the date on the signed delivery note then it will be deemed that The Radiator Company have fully complied with its obligations and claims will not be considered.

Failure to comply with any of the above may invalidate any claims.

We recommend that after you check the product on delivery that it is stored in its packaging to prevent damage prior to installation. The Radiator Company cannot accept responsibility for items damaged after delivery.

GUARANTEES & LIABILITIES

This product is guaranteed for 10 years . The guarantee is subject to the product being installed in accordance with British and or European standards as well as these fitting instructions. The guarantee in all cases are restricted to the free of charge replacement or repair of the failed product only. Our liability will under no circumstances extend beyond the repair or replacement of the product supplied by us. Claims for either labour in replacement or damage to property are not admissible. Any goods that are returned, in the event of a problem, will belong to The Radiator Company.

The Radiator Company
Units 13 - 14 Charlwoods Road
East Grinstead
West Sussex
RH19 2HU

A brand of **IRSAP SPA**, Italy’s leading manufacturer of design led radiators.

If you have any questions please contact us on 01342 302250
www.theradiatorcompany.co.uk