

Technical Specifications

Materials	Steel.
Connections	½" flow and return.
Test pressure	6.5 Bar
Maximum operating pressure	4 Bar
Maximum working temperature	95°C
Packaging	Cardboard protection and shrink wrapped.

PLEASE NOTE: Systems using micro bore pipework must have adequate pressure and flow rates for the number and style of radiators on the system.

Terms & Conditions

All products must be inspected once removed from the packaging and The Radiator Company notified within 28 days of delivery of any scratches, blemishes or other damage. The Radiator Company will then replace the radiator.

Imperfect radiators should therefore not be fitted and The Radiator Company will not accept responsibility for replacement of scratched or damaged radiators once they have been fitted. This includes any consequential loss or cost of fitting.

If The Radiator Company are not notified within 28 days of the date on the signed delivery note then it will be deemed that The Radiator Company have fully complied with its obligations and claims will not be considered.

Failure to comply with any of the above may invalidate any claims.

We recommend that after you check the product on delivery that it is stored in its packaging to prevent damage prior to installation. The Radiator Company cannot accept responsibility for items damaged after delivery.

Guarantees & Liabilities

The Quadre is guaranteed for 10 years. The guarantees in all cases are subject to the products being installed in accordance with British and or European standards as well as these fitting instructions. The guarantees in all cases are restricted to the free of charge replacement or repair of the failed product only. Our liability will under no circumstances extend beyond the repair or replacement of the product supplied by us. Claims for either labour in replacement or damage to property are not admissible. Any goods that are returned, in the event of a problem, will belong to The Radiator Company.

Fittings Instructions



Cod. 1509M0321

Please read these instructions and terms and conditions carefully prior to installation. Failure to do so may invalidate the warranty.

The Radiator Company
Units 13 - 14 Charlwoods Road
East Grinstead
West Sussex
RH19 2HU



Cod. 1509M0321

Diagrams of Quadre Towel Rail

Fig 1

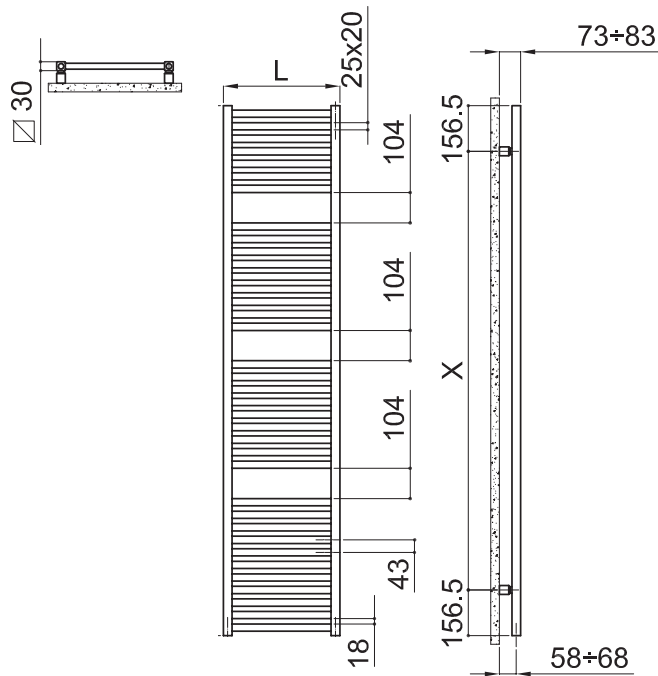
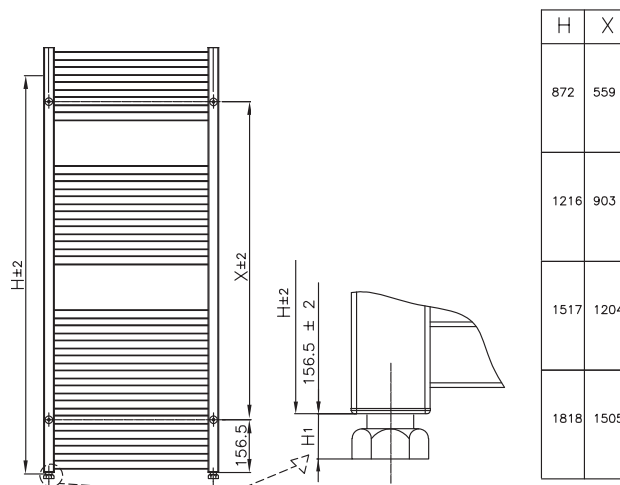


Fig 2

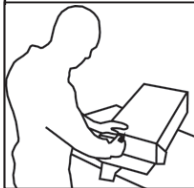


Pipe Centres

Pipe centres left to right	width less 30mm
Pipe centres from wall	58mm - 68mm
Depth from wall	73mm - 83mm

1 Unpack & Inspect

The Radiator Company prides itself on selecting products from manufacturers who exercise tight quality control measures. We only select models with excellent standards of welding and brazing, as well as high quality finishes. All of our products are well packaged and should reach you in perfect condition. Just in case however, we offer a minimum 5-year no quibble guarantee for all radiators and towel rails.

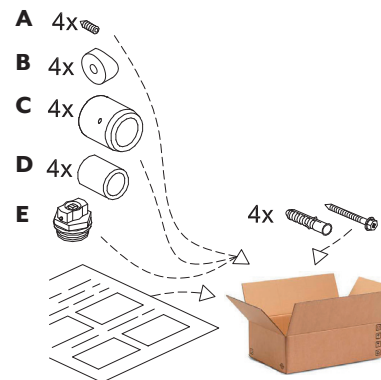


The Radiator Company must be notified of any shortages or damage within 28 days of delivery. For further information please see terms and conditions on back page.

2 Contents

You should have:

- 1 Radiator
- 4 Brackets
- 1 Airvent



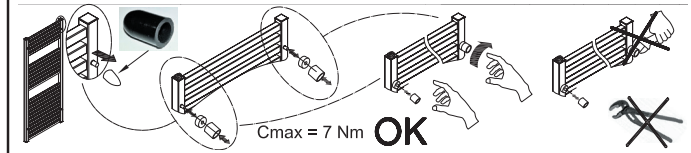
You will need:

- Electric Drill / Bits
- Hex keys
- Tape measure
- Spirit level
- Screwdriver
- PTFE Tape
- Spanner
- Valves

3 Installing Radiator

Remove rubber protectors on the studs on the rear of the towel rail. Slide spacer "B" onto stud followed by threaded Bracket stud "D".

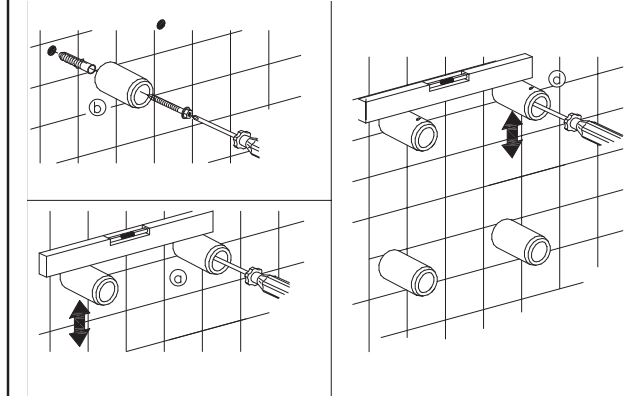
NB this needs to be hand tightened only, DO NOT USE PUMP PLIERS.



Mark position of brackets on wall. From left to right, width of towel rail less 30mm (15mm from each side)

From top to bottom Measure 156.5mm from required base of the towel rail for the bottom fixing. Follow diagram to measure from bottom fixing to top fixing. See fig 2 shown left

Drill and fix bracket sleeves and check they are level.



Loosely fit grub screw "A"

Lift towel rail and insert the rear studs into the bracket sleeves and tighten grub screws. Insert air vent and connect pipework.

PLEASE NOTE :

It is essential that all brackets are level to ensure a vertical alignment for connecting the pipework.

4 Commission

Please Note:

In accordance with Part L1 2006 of the Building Regulations and BS7593:1992 code of practice for the treatment of hot water and central heating systems, we strongly recommend flushing the heating system post installation of new radiators and then adding the correct quantity and type of inhibitor for use with your radiator and system to prevent corrosion. Damage caused to systems not protected by a suitable inhibitor will not be covered by manufacturer's guarantee.