



BRIGITTE

MATERIAL:

- Vertical collectors in painted mild steel \varnothing 30 mm.
- Curved horizontal heating elements in painted mild steel \varnothing 18 mm.

FIXING KIT:

Brackets, airvent, hexagonal tool, plugs and screws for mounting suitable for use on compact or hollow brick, user notice.
The kit is certified from TÜV in compliance with VDI 6036-class 4.

PACKAGING:

Carton angular and profiles protected by a recyclable film in polyethylene. User notice included.

PAINTING PROCESS:

Painted with ecological epoxy powders. (Certificate DIN 55900-1,-2)

COLOURS:

Radiator and accessories: standard white colour RAL 9010-R01.
For other colours see Colour chart chapter.

ACCESSORIES:

See Accessories chapter

Functioning:	<input checked="" type="checkbox"/> Hot water	<input type="checkbox"/> Dual energy
--------------	---	--------------------------------------

P. Max: 8 bar	Functioning: hot water	T. Max: 110° C	Connections: 2 x 1/2" gas - 1 x 1/2" gas for airvent
---------------	------------------------	----------------	--

CERTIFICATIONS



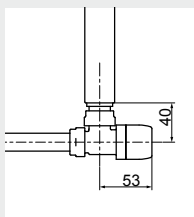
ACCESSORIES

Kristal valve square With thermostatic option White R01 - ral 9010



Copper conn. \varnothing 12/14/15
Art. nr. 5991990311161

Multilayer conn. \varnothing 16
Art. nr. 5991990311160

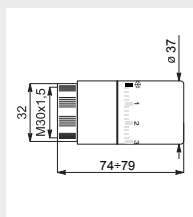


Quotes for square Kristal valves with thermostatic option



White thermostatic head

(Kit 2 pieces)
Art. nr. 5035270710016



Thermostatic head quotes

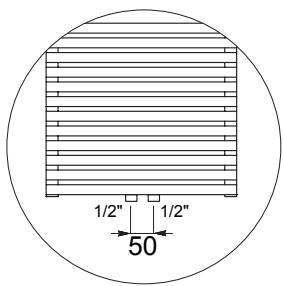


Kit 2 Hooks WHITE RAL 9010 - R01

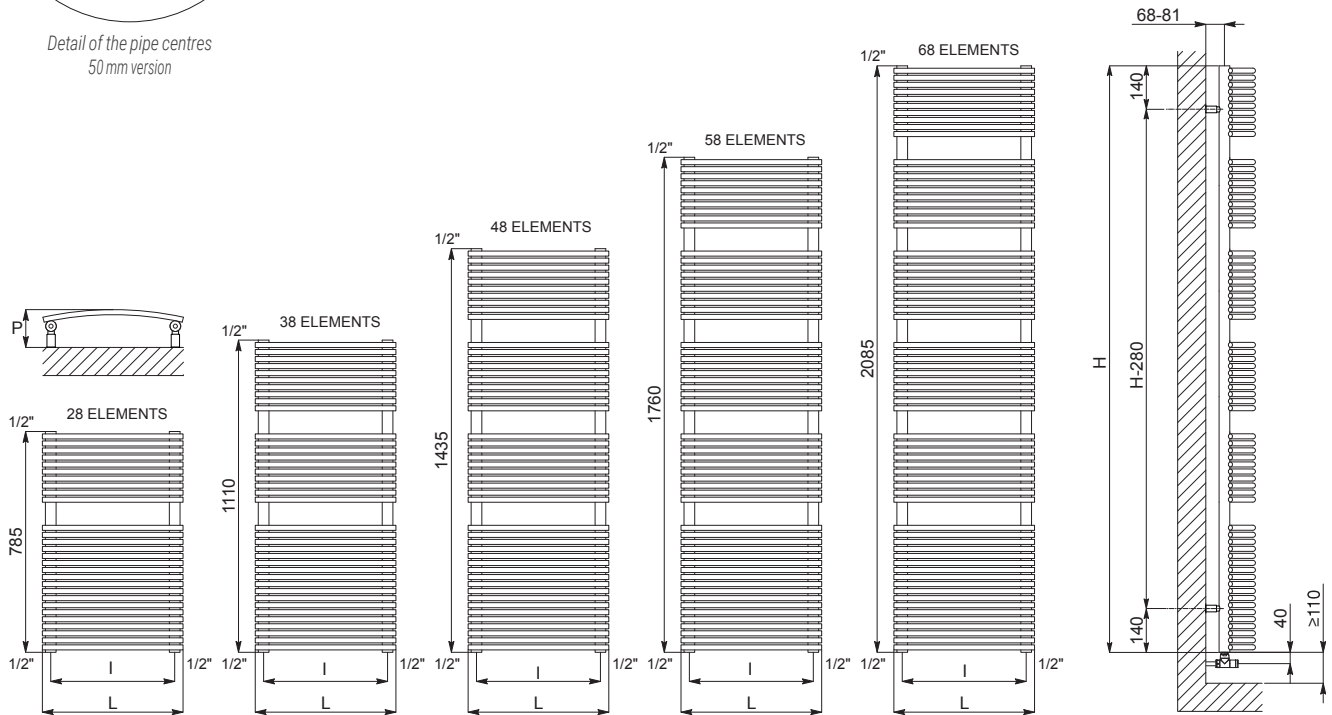
Art. nr. 5991990310388

If ordered separately from the radiator, the accessories are available in standard white only.

Accessories and spare parts - see Accessories chapter



Detail of the pipe centres
50 mm version



Quotes for Kristal valves

BRIGITTE

Height [mm]	WIDTH L [mm]	Pipe Centres l [mm]	Art. nr.	Pipe Centres 50 mm		Thermal output [Watt]				Dual energy kit [Watt]		
				Art. nr.	P [mm]	Dry Weight [Kg]	Surface [m ²]	Water con- tent [lt]	Δt=50°C		Δt=30°C	Exp. n
785	400	350	3551406102150	3551406102171	116÷129	7,6	0,77	3,0	425	229	1,2122	500
	450	400	3551406102154	3551406102175	122÷134	7,9	0,86	3,3	554	301	1,1946	700
	400	350	3551406102151	3551406102172	116÷129	9,8	1,07	4,2	567	304	1,2200	700
	450	400	3551406102155	3551406102176	122÷134	10,8	1,17	4,5	690	372	1,2100	700
1110	500	450	3551406102158	3551406102179	129÷141	11,8	1,28	4,9	732	396	1,2007	900
	550	500	3551406102162	3551406102183	137÷149	12,7	1,38	5,3	814	433	1,2360	900
	600	550	3551406102166	3551406102187	146÷158	13,7	1,49	5,6	897	489	1,1885	1200
	400	350	3551406102152	3551406102173	116÷129	12,3	1,35	5,3	713	381	1,2278	900
	450	400	3551406102156	3551406102177	122÷134	13,8	1,49	5,8	789	422	1,2254	1200
1435	500	450	3551406102159	3551406102180	129÷141	14,8	1,68	6,0	912	492	1,2068	1200
	550	500	3551406102163	3551406102184	137÷149	16,7	1,73	6,7	916	496	1,2011	1200
	600	550	3551406102167	3551406102188	146÷158	17,4	1,80	7,2	1111	604	1,1935	1200
	400	350	3551406102153	3551406102174	116÷129	15,2	1,64	6,4	863	459	1,2355	1200
	450	400	3551406102157	3551406102178	122÷134	16,7	1,80	7,0	954	510	1,2255	1200
1760	500	450	3551406102160	3551406102181	129÷141	18,1	1,97	7,5	1095	589	1,2130	1200
	550	500	3551406102164	3551406102185	137÷149	19,5	2,14	8,1	1132	611	1,2058	1200
	600	550	3551406102168	3551406102189	146÷158	21,0	2,30	8,6	1327	719	1,1984	1200
	500	450	3551406102161	3551406102182	129÷141	21,3	2,31	8,9	1281	687	1,2191	1200
	2085	500	500	3551406102165	3551406102186	137÷149	23,1	2,50	9,5	1544	835	1,2034
	750	700	3551406102170	3551406102191	158÷170	29,7	3,20	12,1	1953	1040	1,2330	1200

Art. nr. are referred to colour WHITE R01 - RAL 9010 version.

For output at different Δt than 50°C, please refer to the following formula: desired output = output at Δt 50°C x (desired Δt/50)ⁿ