

Sax



Double horizontal 520mm x 900mm shown in RAL 9016 with White Ideal TRV's



Double vertical 1800mm x 400mm shown in RAL 9006 White Aluminium with Chrome Pistol TRV's

Sax[®] horizontal

shown on pages 52-53



High quality Italian design & manufacture.
Steel; 20mm x 25mm tubes with 30mm collectors
UKCA approved & certified to BS EN442

White RAL 9016 as standard, 188 RAL colours plus 30 Special Finishes
Please call **01342 302250** for a RAL or Special Finish chart
Colour Co-ordination Service available on stock sizes see pages 6-7 for full details.

Stock White RAL 9016: 48-72 Hours
Made to Order sizes & colours: Up to 5 weeks



SAVE MONEY! WHEN YOU BUY OUR IDEAL TRV KIT WITH ANY DESIGNER ORDER*QUOTE **PROMOVI** AT TIME OF ORDER

Available in White or Chrome

Stock options White RAL 9016 - Single Horizontal

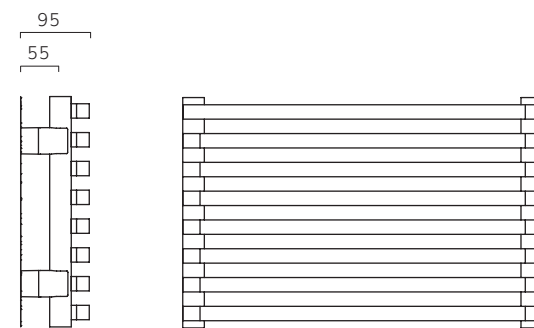
Height (mm)	Width (mm)	Model	Watts Δt50°C	Btu's Δt50°C
520	1200	SAXSH521213	799	2726
600	900	SAXSH609015	686	2341
	1200	SAXSH601215	915	3122

Pipe centres left to right	Pipe centres from wall	Depth from wall
width - 30mm	55mm	95mm

Made to order options - Single Horizontal

Height (mm)	Width (mm)	Model	Watts Δt 50°C	Btu's Δt 50°C
400	900	SAXSH409010	465	1587
	1200	SAXSH401210	621	2119
	1500	SAXSH401510	776	2648
520	900	SAXSH529013	599	2044
	1500	SAXSH521513	999	3409
	1800	SAXSH521813	1199	4091
600	1500	SAXSH601515	1144	3903
	1800	SAXSH601815	1373	4685

Single



Stock options White RAL 9016 - Double Horizontal

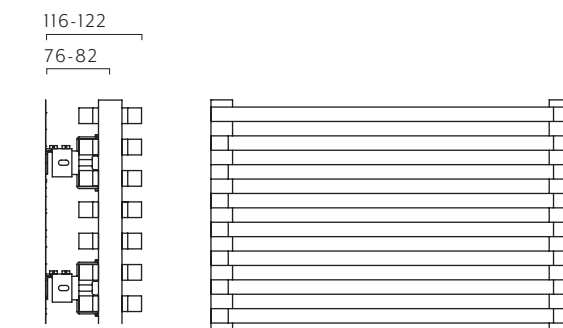
Height (mm)	Width (mm)	Model	Watts Δt 50°C	Btu's Δt 50°C
520	1200	SAXDH521213	1272	4340
600	900	SAXDH609015	1066	3637
	1200	SAXDH601215	1422	4852

Pipe centres left to right	Pipe centres from wall	Depth from wall
width - 30mm	76mm to 82mm	116mm to 122mm

Made to order options - Double Horizontal

Height (mm)	Width (mm)	Model	Watts Δt 50°C	Btu's Δt 50°C
400	900	SAXDH409010	777	2651
	1200	SAXDH401210	1036	3535
	1500	SAXDH401510	1295	4419
520	900	SAXDH529013	954	3255
	1500	SAXDH521513	1591	5428
	1800	SAXDH521813	1909	6514
600	1500	SAXDH601515	1777	6063
	1800	SAXDH601815	2133	7278

Double



© Sax is an IRSAP Group registered design

*Saving based on the value of individual items when bought separately. Order any of our selected valves & matching pipe covers at the same time as your radiator; PROMOVIW (white), PROMOVIC (chrome).

Sax[®] vertical

shown on pages 52-53



High quality Italian design & manufacture.
Steel; 20mm x 25mm tubes with 30mm collectors
UKCA approved & certified to BS EN442

White RAL 9016 as standard, 188 RAL colours plus 30 Special Finishes
Please call **01342 302250** for a RAL or Special Finish chart
Colour Co-ordination Service available on stock sizes see pages 6-7 for full details.

Stock White RAL 9016: 48-72 Hours
Made to Order sizes & colours: Up to 5 weeks



SAVE MONEY! WHEN YOU BUY OUR IDEAL TRV KIT WITH ANY DESIGNER ORDER*QUOTE **PROMOVI** AT TIME OF ORDER

Available in White or Chrome

Stock options White RAL 9016 - Single Vertical

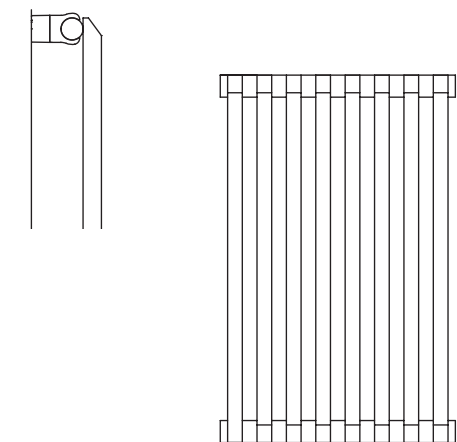
Height (mm)	Width (mm)	Model	Watts Δt 50°C	Btu's Δt 50°C
1800	400	SAXSV184010	861	2938
	520	SAXSV185213	1119	3818

Made to order options - Single Vertical

Height (mm)	Width (mm)	Model	Watts Δt 50°C	Btu's Δt 50°C
1200	280	SAXSV122807	411	1402
	400	SAXSV124010	588	2006
	520	SAXSV125213	764	2607
1500	280	SAXSV152807	506	1726
	400	SAXSV154010	723	2467
	520	SAXSV155213	940	3207
1800	280	SAXSV182807	603	2057
	400	SAXSV184010	861	2938
	520	SAXSV185213	1119	3818
2000	280	SAXSV202807	669	2283
	400	SAXSV204010	955	3258
	520	SAXSV205213	1242	4238
	600	SAXSV206015	1433	4889

Single

Pipe centres left to right	Pipe centres from wall	Depth from wall
width + valves	55mm	95mm



Stock options White RAL 9016 - Double Vertical

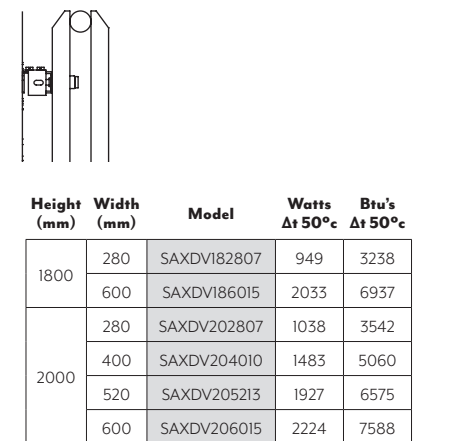
Height (mm)	Width (mm)	Model	Watts Δt 50°C	Btu's Δt 50°C
1800	400	SAXDV184010	1356	4627
	520	SAXDV185213	1762	6012

Made to order options - Double Vertical

Height (mm)	Width (mm)	Model	Watts Δt 50°C	Btu's Δt 50°C
1200	280	SAXDV122807	668	2279
	400	SAXDV124010	954	3255
	520	SAXDV125213	1240	4231
1500	280	SAXDV152807	811	2767
	400	SAXDV154010	1159	3955
	520	SAXDV155213	1507	5142
600	SAXDV156015	1738	5930	

Double

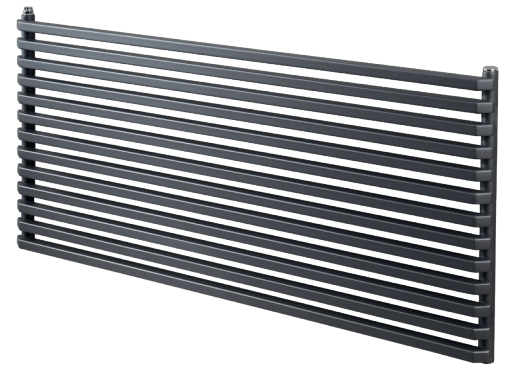
Pipe centres left to right	Pipe centres from wall	Depth from wall
width + valves	76mm to 82mm	116mm to 122mm



© Sax is an IRSAP Group registered design

*Saving based on the value of individual items when bought separately. Order any of our selected valves & matching pipe covers at the same time as your radiator; PROMOVIW (white), PROMOVIC (chrome).

Rectangular Tube Horizontal Fitting Instructions



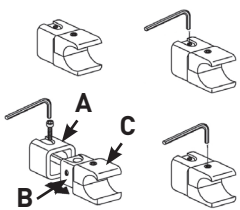
Steel Designer Radiator
20mm x 25mm Rectangular Tubes
30mm Collectors

Please read these instructions and terms and conditions carefully prior to installation. Failure to do so may invalidate the warranty.

Drawings

Fig 1

Single Horizontal



Double Horizontal

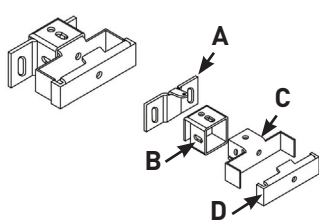
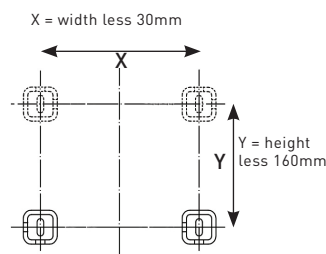


Fig 2

Single Horizontal



Double Horizontal

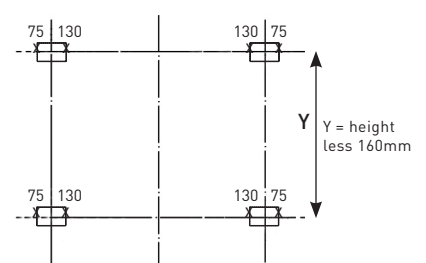
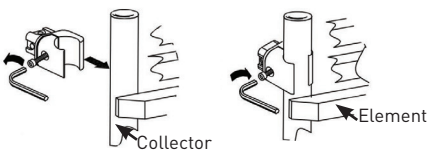
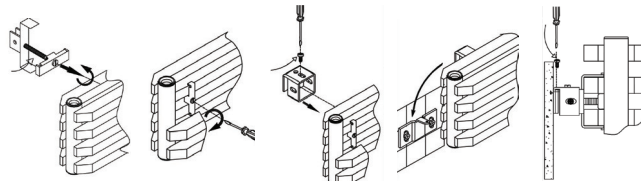


Fig 3

Single Horizontal



Double Horizontal



Pipe Centres

	Single	Double
Pipe centres left to right	= width minus 30mm	= width minus 30mm
Pipe centres from wall	= 55mm	= 76mm - 82mm
Depth from wall	= 95mm	= 116mm - 122mm

1. Unpack & Inspect

This product should have reached you in perfect condition. Please carefully unpack and inspect this radiator and all fittings. Your point of purchase must be notified of any shortages or damage within 28 days of delivery. For further information please see terms and conditions overleaf.

2. Contents

You should have:

- 1 Radiator
- 4 Wall Brackets
- 4 Wall Plugs
- 4 Screws
- 4 Wall Sleeves
- 4 Wall Plates (double models)
- 1 Airvent
- 1 Blanking Plug

You will need:

- Tape measure
- Electric drill and bits
- Spirit level

3. Mark Bracket Positions

Single Horizontal

1. Mark bracket positions as per **Fig. 2**, measure the width (X) of the radiator less 30mm and the height (Y) of the radiator less 160mm to find your four fixing positions for the Wall sleeves.
2. The Wall Sleeve (**A** in **Fig. 1**) screws into the wall in the positions as described above.
3. See **Fig 1** - join together **B, C, D**. Fix to radiator between the 2nd and 3rd element from top and bottom and 100mm from either side, ensuring part "**B**" has the fastening screw on top.
4. Raise radiator and hook onto Wall plate "**A**" and fasten bracket to plate with screw (**Fig. 3**).

Double Horizontal

1. Mark bracket positions as per **Fig. 3**, each wall plate (**A** in **Fig. 1**) has two fixing positions, measure 75mm in from the side of the radiator for the first position and 130mm in for the 2nd. Then measure the height (Y) of the radiator less 160mm to get the top and bottom measurements.
2. The Wall Plate (**A** in **Fig. 1**) screws into the wall in the positions as described above.

3. Mark Bracket Positions

Double Horizontal continued

4. See **Fig 1** - join together **B, C, D** ensuring the **B** has the fastening screw on top, hook the brackets over the plates.
5. Raise radiator and slot into Wall plate "**A**" and fasten bracket to plate with screw (**Fig. 3**).

4. Fix Brackets

Using a suitable drill bit, screws and plugs, fix the brackets and level with a spirit level.

PLEASE NOTE:

It is essential that all brackets are level and square prior to hanging the radiator to ensure a vertical alignment for connecting the pipework.

5. Hang & Commission

With the brackets sleeves firmly fixed and level, the radiator can be hung in position by inserting the brackets into the sleeves and securing with the grub screws provided.

When commissioning your radiator on an indirect/closed system we recommend using a suitable mixed metal inhibitor to protect against scale & corrosion.

Damage caused to systems not protected by a suitable inhibitor will not be covered by manufacturer's guarantee.

Technical Specifications

Materials	Steel.
Connections	½" flow and return.
Test pressure	6 Bar
Maximum operating pressure	4 Bar
Maximum working temperature	95°C
Packaging	Wrapped in polyethylene & boxed.

Guarantees & Liabilities

This product is guaranteed for 10 years. The guarantees in all cases are subject to the products being installed in accordance with British and or European standards as well as these fitting instructions. The guarantees in all cases are restricted to the free of charge replacement or repair of the failed product only. Our liability will under no circumstances extend beyond the repair or replacement of the product supplied by us. Claims for either labour in replacement or damage to property are not admissible. Any goods that are returned, in the event of a problem, will belong to us.

Terms & Conditions

All products must be inspected once removed from the packaging and your point of purchase notified within 28 days of delivery of any scratches, blemishes or other damage. Your point of purchase will then agree appropriate action.

Imperfect radiators should therefore not be fitted and your point of purchase will not accept responsibility for replacement of scratched or damaged radiators once they have been fitted. This includes any consequential loss or cost of fitting.

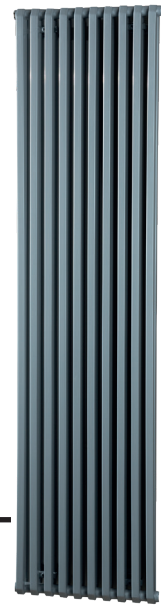
If your point of purchase are not notified within 28 days of the date on the signed delivery note then it will be deemed that they have fully complied with their obligations and claims will not be considered.

Failure to comply with any of the above may invalidate any claims. Your point of purchase recommend that after you check the product on delivery that it is stored in its packaging to prevent damage prior to installation, they cannot accept responsibility for items damaged after delivery.

Rectangular Tube Vertical Fitting Instructions

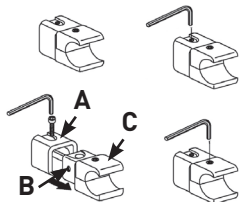
Steel Designer Radiator
20mm x 25mm Rectangular Tubes
30mm Collectors

Please read these instructions and terms and conditions carefully prior to installation. Failure to do so may invalidate the warranty.



Drawings

Fig 1
Single Vertical



Double Vertical

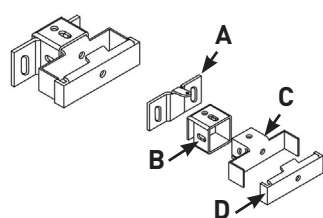


Fig 2

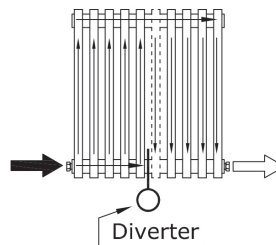


Fig 3
Single Vertical

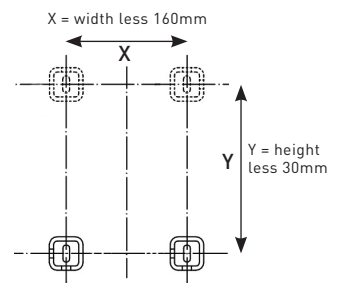


Fig 3
Double Vertical

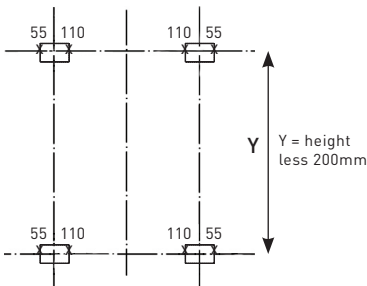
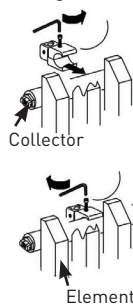
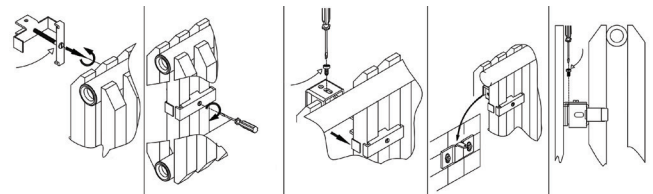


Fig 4
Single Vertical



Double Vertical



Pipe Centres

	Single	Double
Pipe centres left to right	= width plus valves	width plus valves
Pipe centres from wall	= 55mm	76mm - 82mm
Depth from wall	= 95mm	116mm - 122mm

1. Unpack & Inspect

This product should have reached you in perfect condition. Please carefully unpack and inspect this radiator and all fittings. Your point of purchase must be notified of any shortages or damage within 28 days of delivery. For further information please see terms and conditions overleaf.

2. Contents

You should have:

- 1 Radiator
- 4 Wall Brackets
- 4 Wall Plugs
- 4 Screws
- 4 Wall Sleeves
- 4 Wall Plates (double models)
- 1 Airvent
- 1 Blanking Plug
- 1 Diverter

You will need:

- Tape measure
- Electric drill and bits
- Spirit level

3. Mark Bracket Positions

Single Vertical

1. Mark bracket positions as per **Fig. 3**, measure the width (X) of the radiator less 160mm and the height (Y) of the radiator less 30mm to find your four fixing positions for the Wall sleeves.
2. The Wall Sleeve (**A** in **fig. 1**) screws into the wall in the positions as described above.
3. Ensure diverter is in the correct position
4. Attach clamps **B & C** to collector between the 2nd and 3rd element, top and bottom, from either side, do not overtighten (**Fig. 1**) this, to allow slight adjustment for inserting into wall sleeves.
5. Raise radiator and slot into Wall sleeves "**A**" and tighten (**Fig. 4**).

Double Vertical

1. Mark bracket positions as per **Fig. 3**, each wall plate (**A** in **Fig. 1**) has two fixing positions, measure 55mm in from the side of the radiator for the first position & 110mm in for the 2nd. Then measure the height (Y) of the radiator less 200mm to get the top and bottom measurements.
2. The Wall Plate (**A** in **Fig. 1**) screws into the wall in the positions as described above.
3. Ensure diverter is in the correct position

Double Vertical contined

4. See **Fig 1** - join together **B, C, D**. Fix to radiator between the 2nd and 3rd element either side and 100mm from top and bottom, ensuring part "**B**" has the fastening screw on top.
5. Raise radiator and hook onto Wall plate "**A**" and fasten bracket to plate with screw (**Fig. 4**).

4. Fix Brackets

Using a suitable drill bit, screws and plugs, fix the brackets and level with a spirit level.

PLEASE NOTE: It is essential that all brackets are level and square prior to hanging the radiator to ensure a vertical alignment for connecting the pipework.

5. Identify Diverter

Factory fitted steel diverters are used in all vertical models and can be identified by a sticker found on the underside of one collector. The radiator must be hung with the diverter at the bottom. If this sticker is missing simply look into both collectors, one will have a clear water way and one will have a deliberate blockage, this deliberate blockage is the diverter. Please note the diverter can not be removed.

6. Hang & Commission

With the brackets sleeves firmly fixed and level, the radiator can be hung in position by inserting the brackets into the sleeves and securing with the grub screws provided.

When commissioning your radiator on an indirect/closed system we recommend using a suitable mixed metal inhibitor to protect against scale & corrosion.

Damage caused to systems not protected by a suitable inhibitor will not be covered by manufacturer's guarantee.

Technical Specifications

Materials	Steel.
Connections	½" flow and return.
Test pressure	6 Bar
Maximum operating pressure	4 Bar
Maximum working temperature	95°C
Packaging	Wrapped in polyethylene & boxed.

Guarantees & Liabilities

This product is guaranteed for 10 years. The guarantees in all cases are subject to the products being installed in accordance with British and or European standards as well as these fitting instructions. The guarantees in all cases are restricted to the free of charge replacement or repair of the failed product only. Our liability will under no circumstances extend beyond the repair or replacement of the product supplied by us. Claims for either labour in replacement or damage to property are not admissible. Any goods that are returned, in the event of a problem, will belong to us.

Terms & Conditions

All products must be inspected once removed from the packaging and your point of purchase notified within 28 days of delivery of any scratches, blemishes or other damage. Your point of purchase will then agree appropriate action.

Imperfect radiators should therefore not be fitted and your point of purchase will not accept responsibility for replacement of scratched or damaged radiators once they have been fitted. This includes any consequential loss or cost of fitting.

If your point of purchase are not notified within 28 days of the date on the signed delivery note then it will be deemed that they have fully complied with their obligations and claims will not be considered.

Failure to comply with any of the above may invalidate any claims. Your point of purchase recommend that after you check the product on delivery that it is stored in its packaging to prevent damage prior to installation, they cannot accept responsibility for items damaged after delivery.